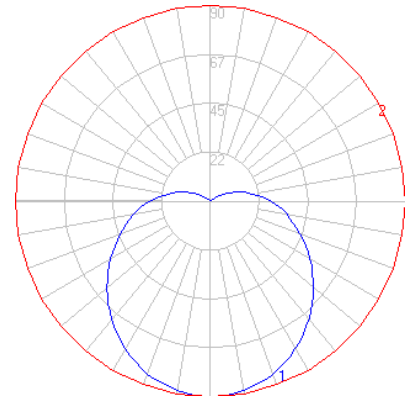


# BEGA

Photometric Filename: 31333.IES

TEST: BE31333  
 TEST LAB: BEGA  
 DATE: 2/26/2015  
 LUMINAIRE: 31 333  
 LAMP: 6.3W LED



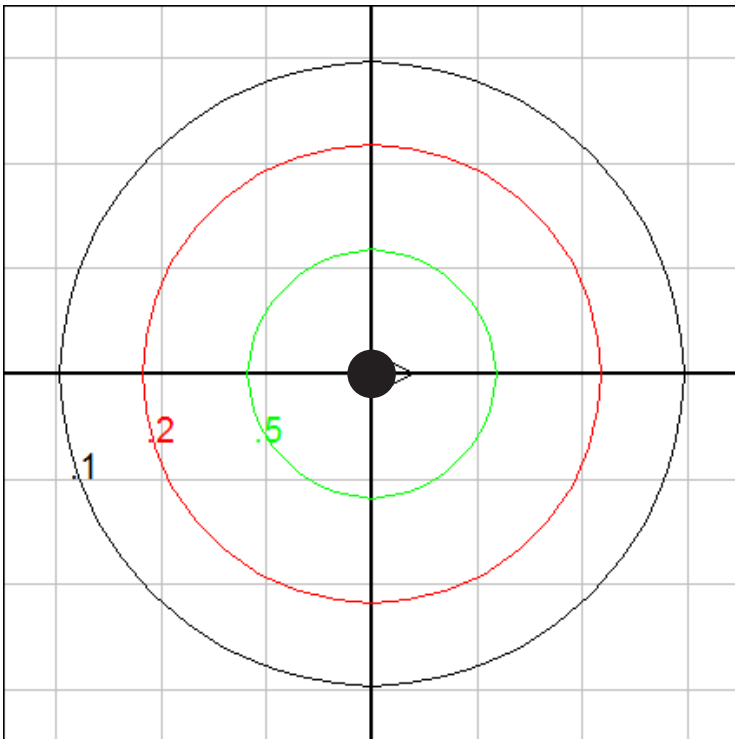
### Characteristics

IES Classification	Type V
Longitudinal Classification	Very Short
Lumens Per Lamp	N.A. (absolute)
Total Lamp Lumens	N.A. (absolute)
Luminaire Lumens	399
Downward Total Efficiency	N.A.
Total Luminaire Efficiency	N.A.
Luminaire Efficacy Rating (LER)	44
Total Luminaire Watts	9
Ballast Factor	1.00
Upward Waste Light Ratio	0.13
Max. Cd.	89.7 (0H, 0V)
Max. Cd. (<90 Vert.)	89.7 (0H, 0V)
Max. Cd. (At 90 Deg. Vert.)	27.9 (7.0%Lum)
Max. Cd. (80 to <90 Deg. Vert.)	35.8 (9.0%Lum)
Cutoff Classification (deprecated)	N.A. (absolute)

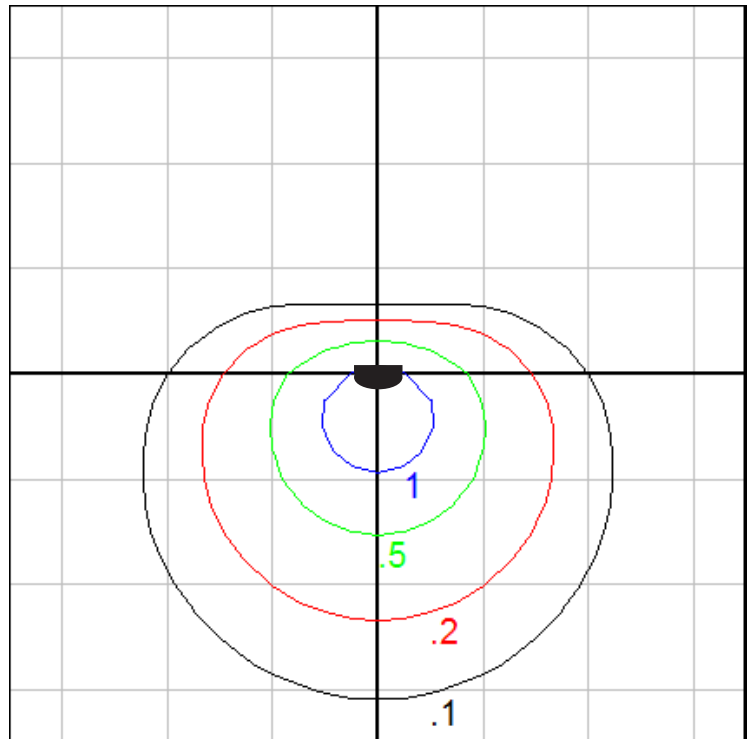
### Lum. Classification System (LCS)

LCS Zone	Lumens	%Lamp	%Lum
FL (0-30)	35.3	N.A.	8.8
FM (30-60)	74.8	N.A.	18.8
FH (60-80)	45.1	N.A.	11.3
FVH(80-90)	17.4	N.A.	4.4
BL (0-30)	35.3	N.A.	8.8
BM (30-60)	74.8	N.A.	18.8
BH (60-80)	45.1	N.A.	11.3
BVH(80-90)	17.4	N.A.	4.4
UL (90-100)	25.8	N.A.	6.5
UH (100-180)	27.9	N.A.	7.0
<b>Total</b>	<b>398.9</b>	<b>N.A.</b>	<b>100.0</b>

**BUG Rating B0-U2-G1**



Ceiling Mount - Isogrid on Floor  
 Mounting Height = 10 ft.      Grid Spacing = 5 ft.



Wall Mount - Isogrid on Floor  
 Mounting Height = 5 ft.      Grid Spacing = 5 ft.

In the interest of product improvement, BEGA reserves the right to make technical changes without notice.