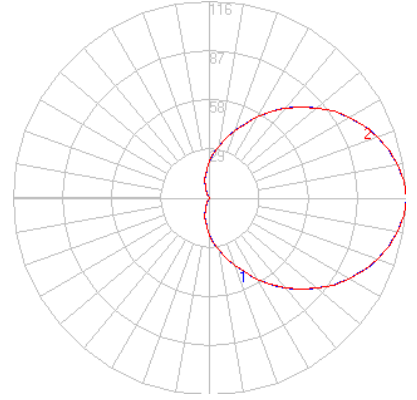
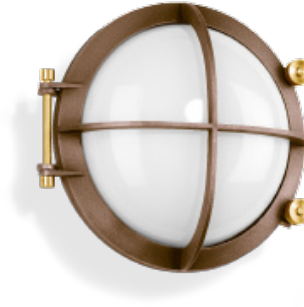


BEGA

Photometric Filename: 31163.ies

TEST: BE31163
 TEST LAB: BEGA
 DATE: 2/26/2016
 LUMINAIRE: 31 163
 LAMP: 7.9W LED



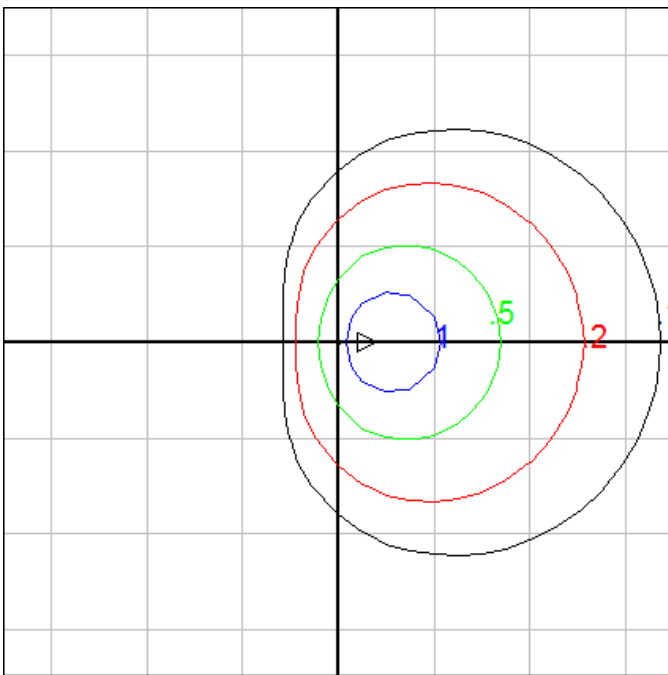
Characteristics

IES Classification	Type V
Longitudinal Classification	Very Short
Lumens Per Lamp	N.A. (absolute)
Total Lamp Lumens	N.A. (absolute)
Luminaire Lumens	412
Downward Total Efficiency	N.A.
Total Luminaire Efficiency	N.A.
Luminaire Efficacy Rating (LER)	41
Total Luminaire Watts	10
Ballast Factor	1.00
Upward Waste Light Ratio	0.50
Max. Cd.	116 (0H, 90V)
Max. Cd. (<90 Vert.)	115.7 (0H, 87.5V)
Max. Cd. (At 90 Deg. Vert.)	116 (28.2%Lum)
Max. Cd. (80 to <90 Deg. Vert.)	115.7 (28.1%Lum)
Cutoff Classification (deprecated)	N.A. (absolute)

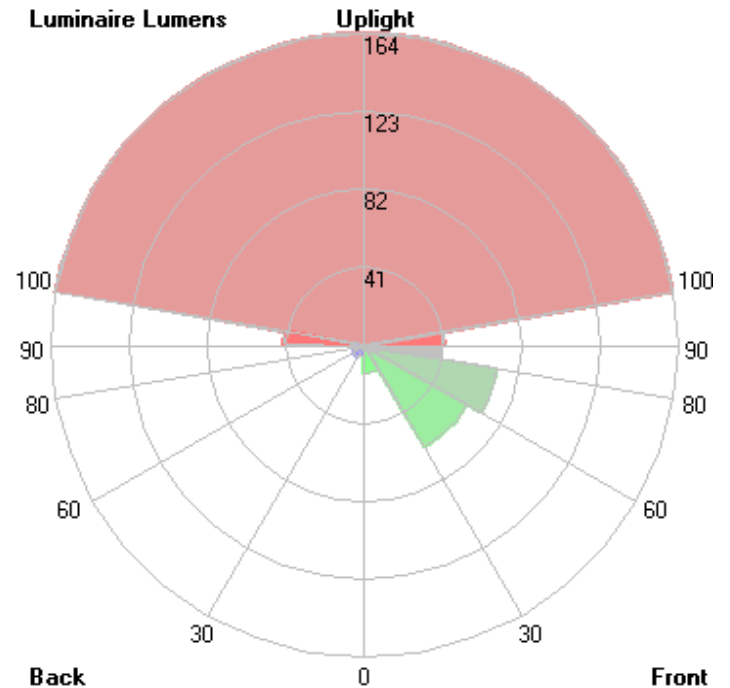
Lum. Classification System (LCS)

<u>LCS Zone</u>	<u>Lumens</u>	<u>%Lamp</u>	<u>%Lum</u>
FL (0-30)	14.5	N.A.	3.5
FM (30-60)	62.0	N.A.	15.0
FH (60-80)	70.3	N.A.	17.1
FVH (80-90)	39.9	N.A.	9.7
BL (0-30)	5.5	N.A.	1.3
BM (30-60)	7.1	N.A.	1.7
BH (60-80)	4.5	N.A.	1.1
BVH (80-90)	2.2	N.A.	0.5
UL (90-100)	42.2	N.A.	10.2
UH (100-180)	163.8	N.A.	39.8
Total	412.0	N.A.	100.0

BUG Rating B0-U3-G1



Mounting Height = 5 ft. Grid Spacing = 5 ft.



In the interest of product improvement, BEGA reserves the right to make technical changes without notice.