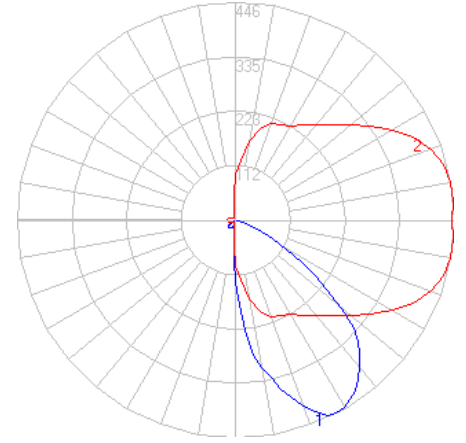


BEGA

Photometric Filename: 24812.IES

TEST: BE_24812
 TEST LAB: BEGA
 DATE: 5/5/2017
 LUMINAIRE: 24 812
 LAMP: 3W LED

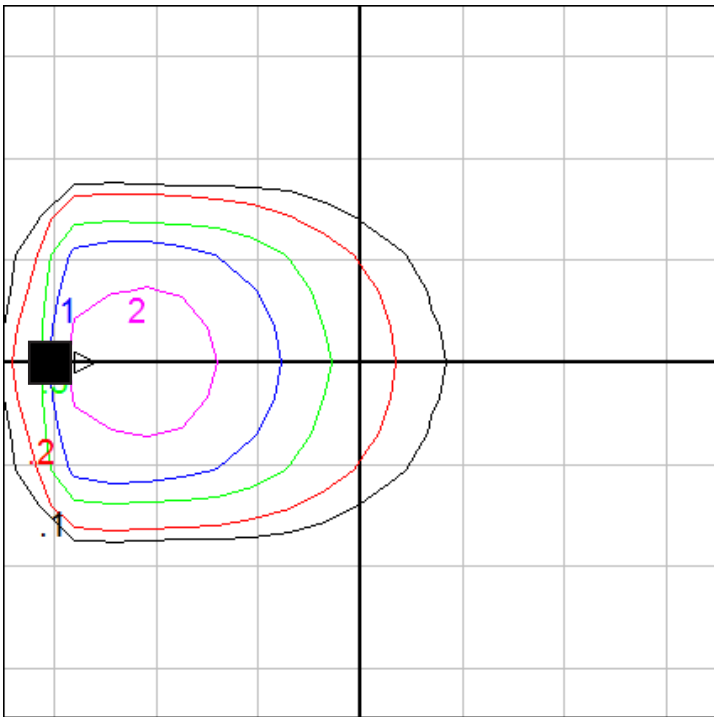


Characteristics

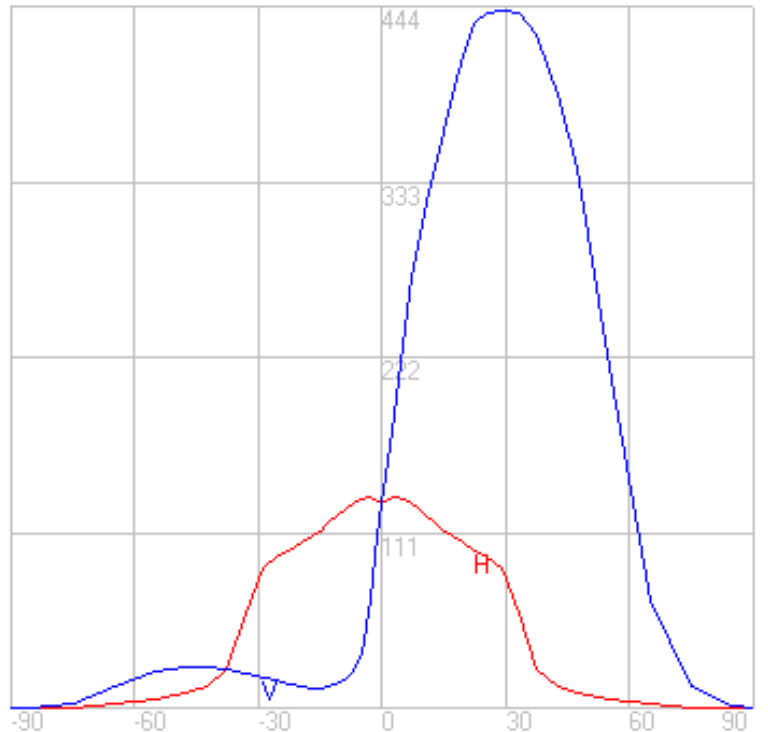
NEMA Type	5 H x 5 V
Maximum Candela	444.1
Maximum Candela Angle	-3 H 29 V
Horizontal Beam Angle (50%)	52.4
Vertical Beam Angle (50%)	49.6
Horizontal Field Angle (10%)	71.4
Vertical Field Angle (10%)	73.5
Lumens Per Lamp	N.A. (absolute)
Total Lamp Lumens	N.A. (absolute)
Beam Lumens	208
Beam Efficiency	N.A.
Field Lumens	292
Field Efficiency	N.A.
Spill Lumens	33
Luminaire Lumens	325
Total Efficiency	N.A.
Total Luminaire Watts	6

Zonal Lumen Summary

Zone	Lumens
0-10	12.67
10-20	41.38
20-30	71.68
30-40	83.41
40-50	64.25
50-60	34.67
60-70	11.98
70-80	2.78
80-90	0.30
90-100	0.00
100-110	0.00
110-120	0.00
120-130	0.00
130-140	0.00
140-150	0.00
150-160	0.00
160-170	0.00
170-180	0.00



Mounting Height = 10 ft. Grid Spacing = 5 ft.



In the interest of product improvement, BEGA reserves the right to make technical changes without notice.