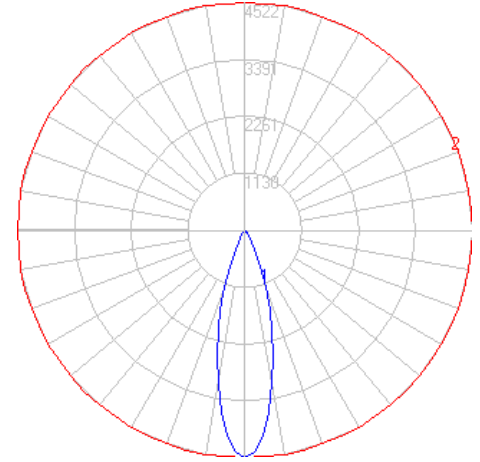


BEGA

Photometric Filename: 24802.IES

TEST: LI_24802
 TEST LAB: BEGA
 DATE: 3/14/2016
 LUMINAIRE: 24 802
 LAMP: 17.8W LED

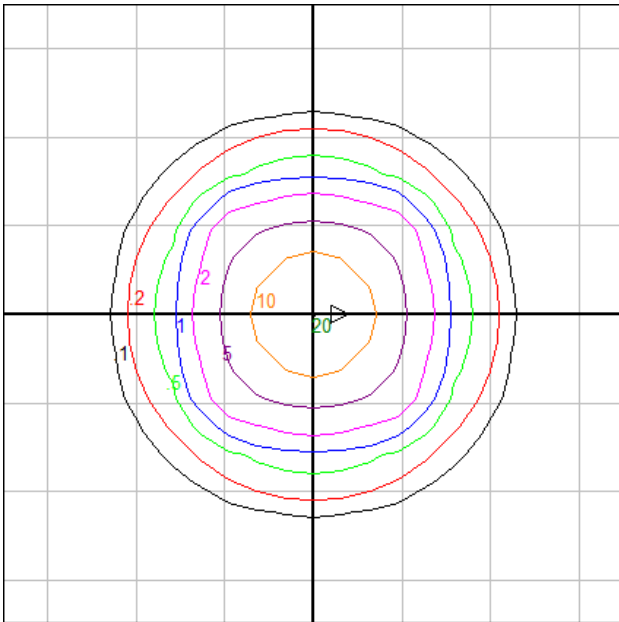


Characteristics

Lumens Per Lamp	N.A. (absolute)
Total Lamp Lumens	N.A. (absolute)
Luminaire Lumens	1295
Total Luminaire Efficiency	N.A.
Luminaire Efficacy Rating (LER)	59
Total Luminaire Watts	22
Ballast Factor	1.00
CIE Type	Direct
Spacing Criterion (0-180)	0.48
Spacing Criterion (90-270)	0.48
Spacing Criterion (Diagonal)	0.54
Basic Luminous Shape	Rectangular
Luminous Length (0-180)	0.36 ft
Luminous Width (90-270)	0.36 ft
Luminous Height	0.00 ft

Zonal Lumen Summary

Zone	Lumens
0-10	358.60
10-20	578.22
20-30	290.97
30-40	53.54
40-50	10.22
50-60	2.75
60-70	0.62
70-80	0.12
80-90	0.01
90-100	0.00
100-110	0.00
110-120	0.00
120-130	0.00
130-140	0.00
140-150	0.00
150-160	0.00
160-170	0.00
170-180	0.00



Mounting Height = 15 ft. Grid Spacing = 5 ft.

In the interest of product improvement, BEGA reserves the right to make technical changes without notice.