

Application

Flush-mounted downlights create a very clean ceiling appearance for atriums, canopies, and other interior and exterior locations. Designed for use in pre-cast or cast-in-place concrete ceilings. Standard housing designed for use with formwork and no plaster finish. Select the appropriate housing option for use with a plaster finish.

Materials

- Clear safety glass
- Marine grade, copper free (≤0.3% copper content) A360.0 aluminum alloy
- Stainless steel housing
- Silicone applied robotically to casting, plasma treated for increased adhesion
- Aluminum installation housing
- Pure anodized aluminum reflector surface
- Silicone optic with excellent high temperature and UV stability
- BEGA Hybrid Optics®

NRTL listed to North American Standards, suitable for wet locations
Protection class IP 65

Weight: 7.9 lbs.

Electrical

Operating voltage	120-277V AC
Minimum start temperature	-30° C
LED module wattage	24.1 W
System wattage	27.0 W
Controllability	0-10V, TRIAC, and ELV dimmable
Color rendering index	Ra > 80
Luminaire lumens	2680 lm
LED service life (L70)	60000 hrs

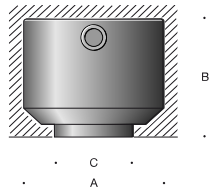
LED color temperature

- 4000K (K4)
- 3500K (K35)
- 3000K (K3)
- 2700K (K27)

BEGA can supply you with suitable LED replacement modules for up to 20 years after the purchase of LED luminaires - see website for details

Finish

Stainless steel finish. Custom colors not available.



Downlight · Linear spread

	LED	□	A	B	C
B24486	24.1 W	42° x 105°	10 ³ / ₈	8 ³ / ₄	6

Type:

BEGA Product:

Project:

Modified:

Available options

- BB24497 Installation housing, concrete with plaster (replaces included installation housing, pre-shippable)

Included (available for pre-shipment)

- BB24485 Installation housing, concrete only

