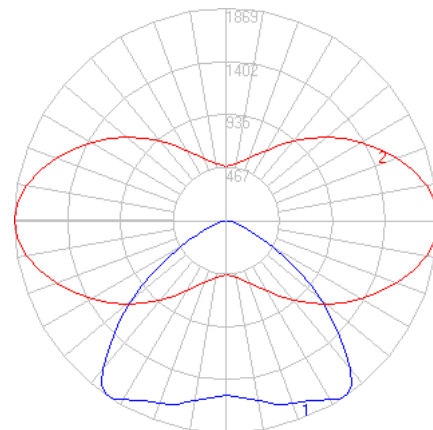
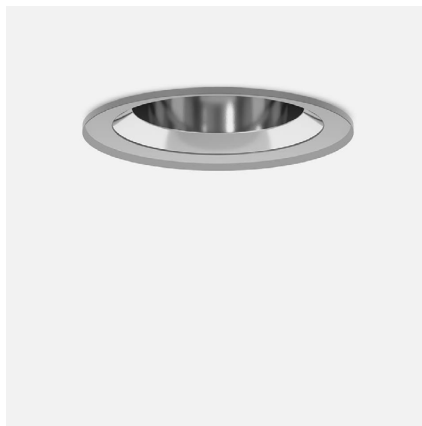


BEGA

File: 24486K4_BEGA_IES.ies

TEST: BE_24486K4
 TEST LAB: BEGA
 DATE: 12/16/2022
 LUMINAIRE: 24 486K4
 LAMP: 24.1W LED

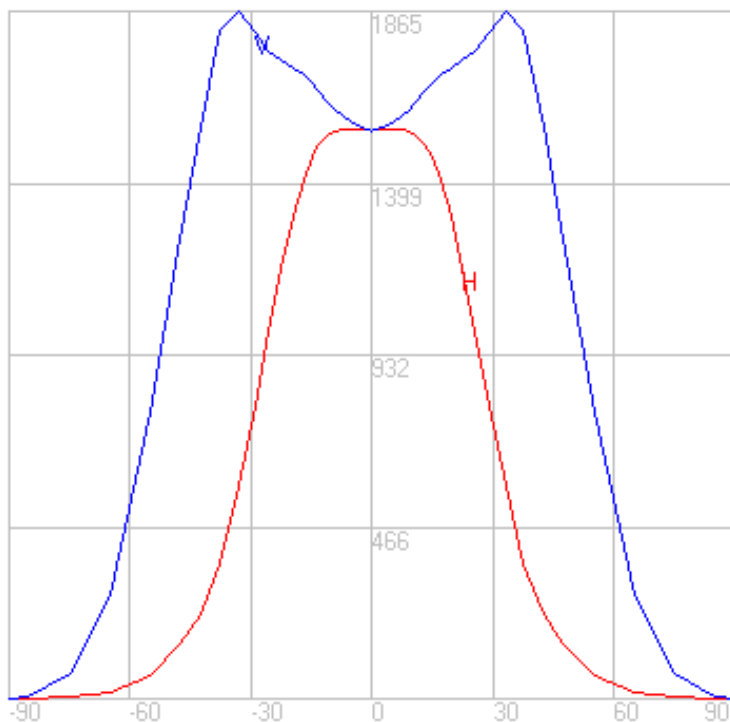
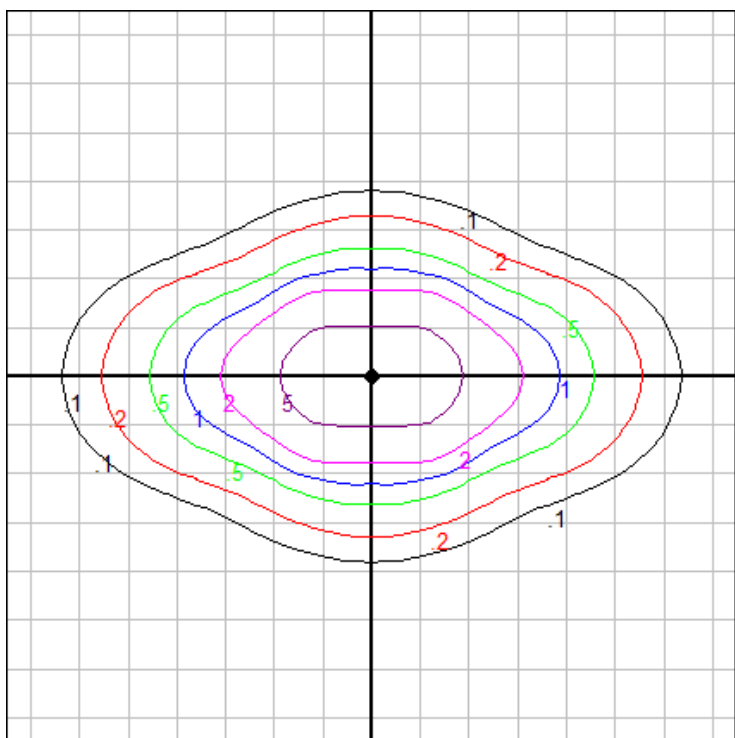


Characteristics

NEMA Type	5 H x 7 V
Maximum Candela	1864.9
Maximum Candela Angle	0 H -33 V
Horizontal Beam Angle (50%)	41.7
Vertical Beam Angle (50%)	105.2
Horizontal Field Angle (10%)	73.0
Vertical Field Angle (10%)	139.0
Lumens Per Lamp	N.A. (absolute)
Total Lamp Lumens	N.A. (absolute)
Beam Lumens	1913
Beam Efficiency	N.A.
Field Lumens	2525
Field Efficiency	N.A.
Spill Lumens	155
Luminaire Lumens	2680
Total Efficiency	N.A.
Total Luminaire Watts	27
Ballast Factor	1.00

Zonal Lumen Summary

Zone	Lumens
0-10	149.26
10-20	447.49
20-30	668.92
30-40	666.04
40-50	409.32
50-60	217.78
60-70	83.69
70-80	23.02
80-90	2.29
90-100	0.00
100-110	0.00
110-120	0.00
120-130	0.00
130-140	0.00
140-150	0.00
150-160	0.00
160-170	0.00
170-180	0.00



Mounting Height: 15 ft.

Grid Spacing: 5 ft.

In the interest of product improvement, BEGA reserves the right to make technical changes without notice.

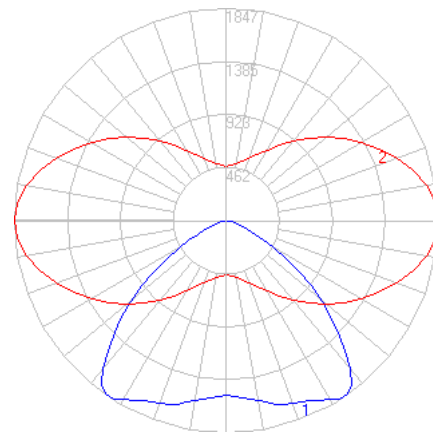
BEGA 1000 Bega Way, Carpinteria, CA 93013 (805)684-0533 Fax (805)566-9474 www.bega-us.com © Copyright BEGA-US 2022

12/16/2022

BEGA

File: 24486K35_BEGA_IES.ies

TEST: BE_24486K4
 TEST LAB: BEGA
 DATE: 12/16/2022
 LUMINAIRE: 24 486K35
 LAMP: 24.1W LED

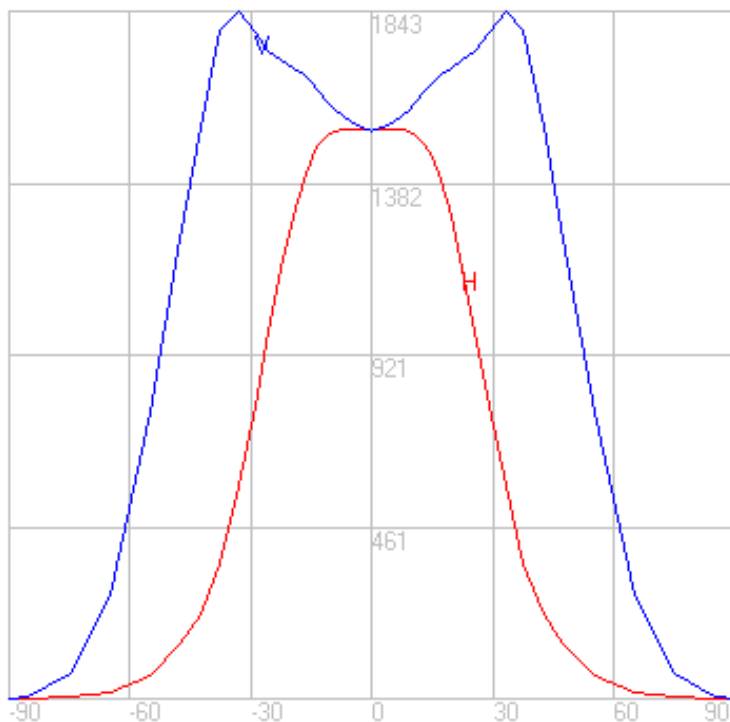
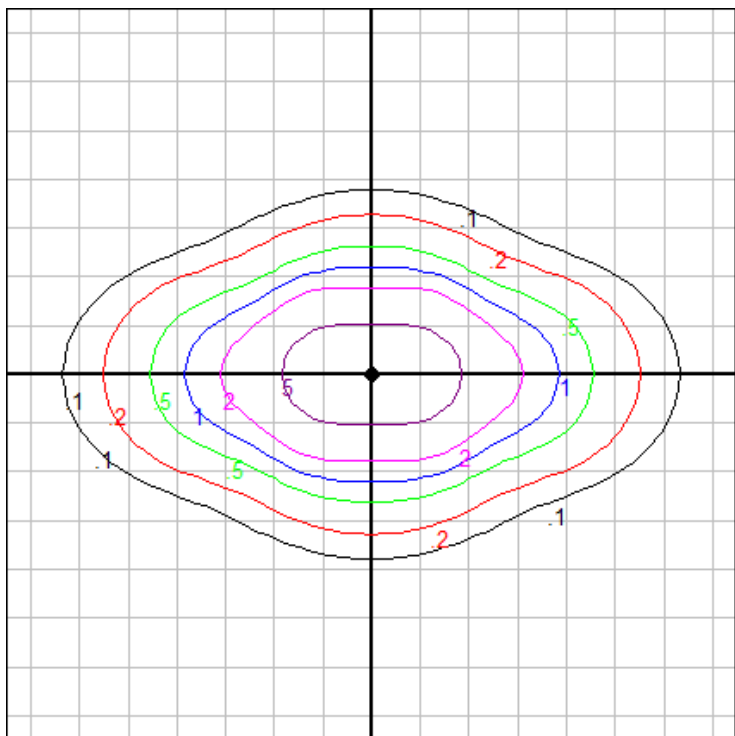


Characteristics

NEMA Type	5 H x 7 V
Maximum Candela	1842.561
Maximum Candela Angle	0 H -33 V
Horizontal Beam Angle (50%)	41.7
Vertical Beam Angle (50%)	105.2
Horizontal Field Angle (10%)	73.0
Vertical Field Angle (10%)	139.0
Lumens Per Lamp	N.A. (absolute)
Total Lamp Lumens	N.A. (absolute)
Beam Lumens	1890
Beam Efficiency	N.A.
Field Lumens	2491
Field Efficiency	N.A.
Spill Lumens	156
Luminaire Lumens	2648
Total Efficiency	N.A.
Total Luminaire Watts	27
Ballast Factor	1.00

Zonal Lumen Summary

Zone	Lumens
0-10	147.47
10-20	442.12
20-30	660.89
30-40	658.05
40-50	404.41
50-60	215.17
60-70	82.68
70-80	22.74
80-90	2.27
90-100	0.00
100-110	0.00
110-120	0.00
120-130	0.00
130-140	0.00
140-150	0.00
150-160	0.00
160-170	0.00
170-180	0.00



Mounting Height: 15 ft.

Grid Spacing: 5 ft.

In the interest of product improvement, BEGA reserves the right to make technical changes without notice.

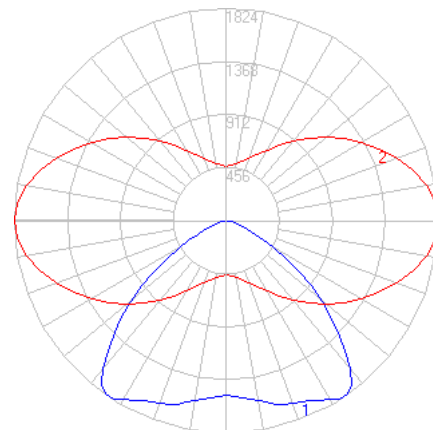
BEGA 1000 Bega Way, Carpinteria, CA 93013 (805)684-0533 Fax (805)566-9474 www.bega-us.com © Copyright BEGA-US 2022

12/16/2022

BEGA

File: 24486K3_BEGA_IES.ies

TEST: BE_24486K4
 TEST LAB: BEGA
 DATE: 12/16/2022
 LUMINAIRE: 24 486K3
 LAMP: 24.1W LED

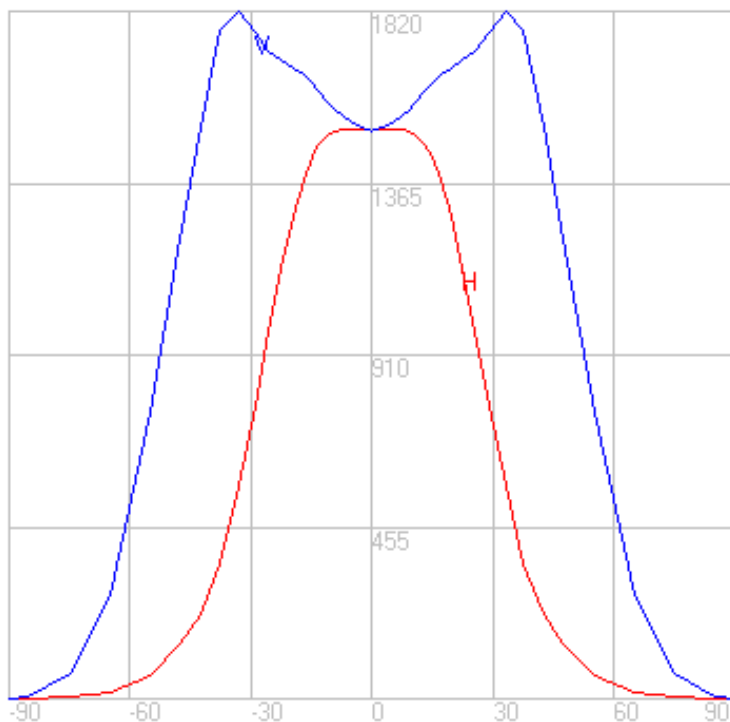
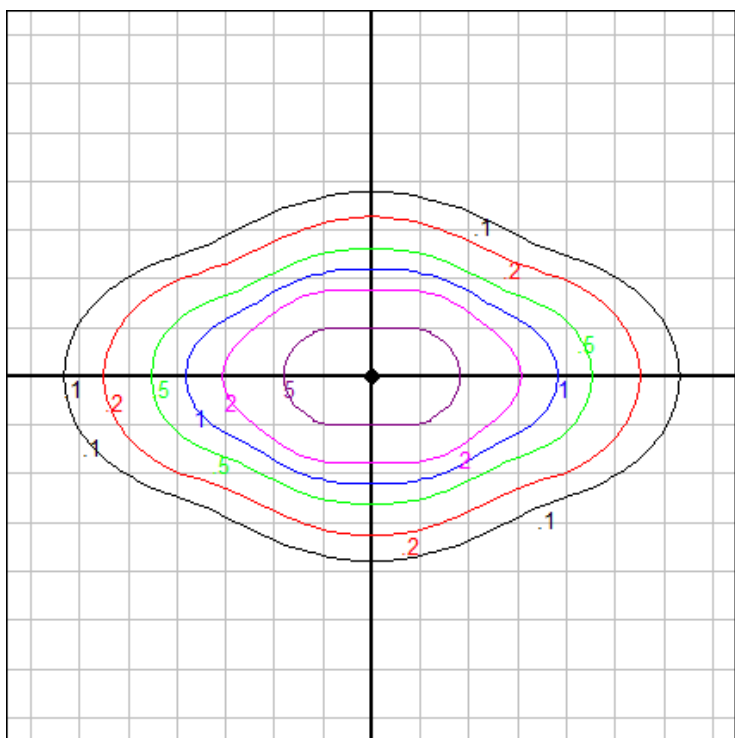


Characteristics

NEMA Type	5 H x 7 V
Maximum Candela	1820.181
Maximum Candela Angle	0 H -33 V
Horizontal Beam Angle (50%)	41.7
Vertical Beam Angle (50%)	105.2
Horizontal Field Angle (10%)	73.0
Vertical Field Angle (10%)	139.0
Lumens Per Lamp	N.A. (absolute)
Total Lamp Lumens	N.A. (absolute)
Beam Lumens	1867
Beam Efficiency	N.A.
Field Lumens	2461
Field Efficiency	N.A.
Spill Lumens	155
Luminaire Lumens	2616
Total Efficiency	N.A.
Total Luminaire Watts	27
Ballast Factor	1.00

Zonal Lumen Summary

Zone	Lumens
0-10	145.68
10-20	436.75
20-30	652.87
30-40	650.06
40-50	399.50
50-60	212.55
60-70	81.68
70-80	22.47
80-90	2.24
90-100	0.00
100-110	0.00
110-120	0.00
120-130	0.00
130-140	0.00
140-150	0.00
150-160	0.00
160-170	0.00
170-180	0.00



Mounting Height: 15 ft.

Grid Spacing: 5 ft.

In the interest of product improvement, BEGA reserves the right to make technical changes without notice.

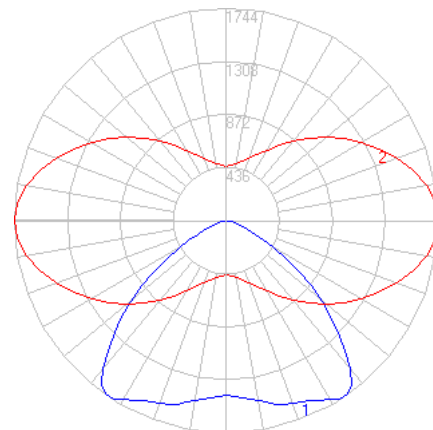
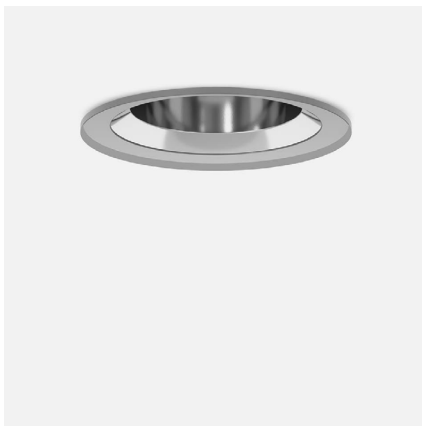
BEGA 1000 Bega Way, Carpinteria, CA 93013 (805)684-0533 Fax (805)566-9474 www.bega-us.com © Copyright BEGA-US 2022

12/16/2022

BEGA

File: 24486K27_BEGA_IES.ies

TEST: BE_24486K4
 TEST LAB: BEGA
 DATE: 12/16/2022
 LUMINAIRE: 24 486K27
 LAMP: 24.1W LED

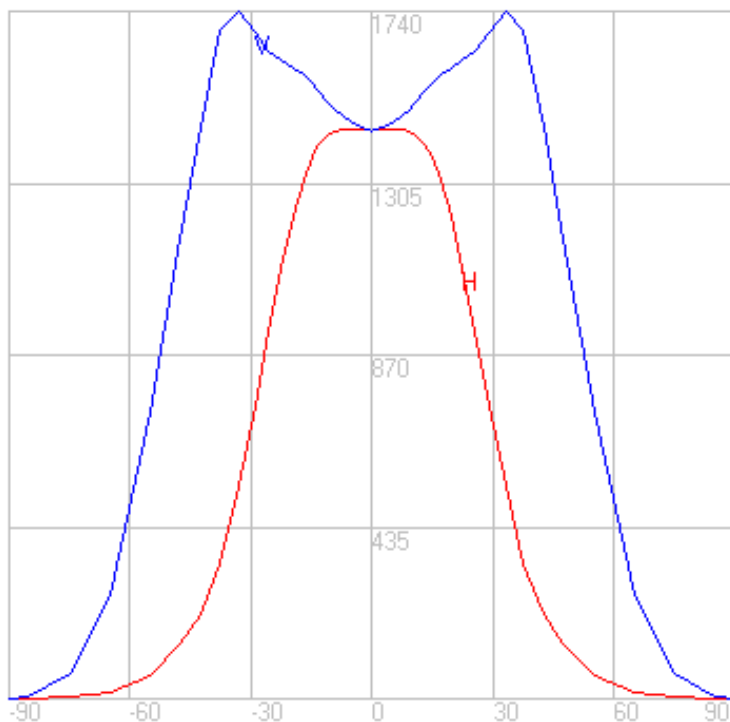
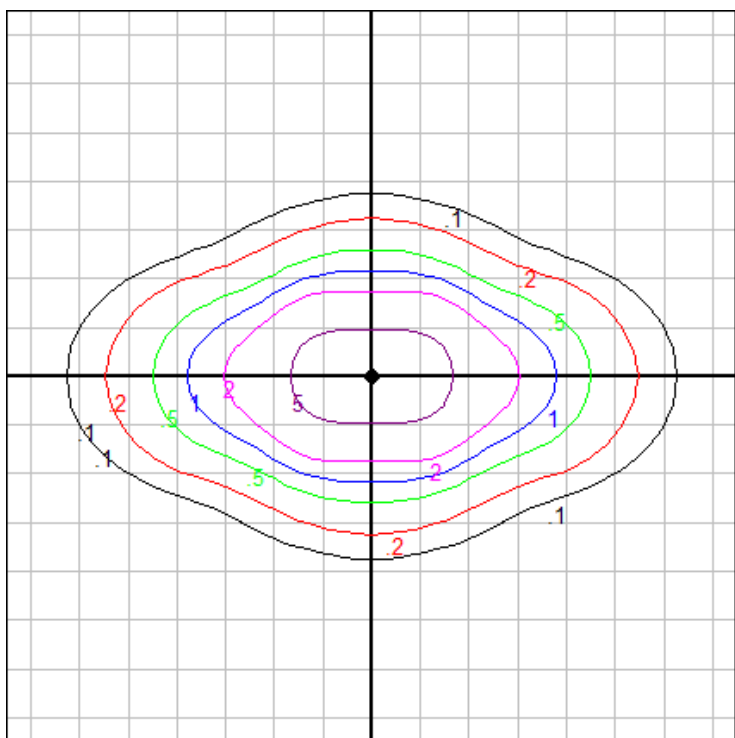


Characteristics

NEMA Type	5 H x 7 V
Maximum Candela	1739.989
Maximum Candela Angle	0 H -33 V
Horizontal Beam Angle (50%)	41.7
Vertical Beam Angle (50%)	105.2
Horizontal Field Angle (10%)	73.0
Vertical Field Angle (10%)	139.0
Lumens Per Lamp	N.A. (absolute)
Total Lamp Lumens	N.A. (absolute)
Beam Lumens	1785
Beam Efficiency	N.A.
Field Lumens	2353
Field Efficiency	N.A.
Spill Lumens	148
Luminaire Lumens	2500
Total Efficiency	N.A.
Total Luminaire Watts	27
Ballast Factor	1.00

Zonal Lumen Summary

Zone	Lumens
0-10	139.26
10-20	417.51
20-30	624.10
30-40	621.42
40-50	381.90
50-60	203.19
60-70	78.08
70-80	21.48
80-90	2.14
90-100	0.00
100-110	0.00
110-120	0.00
120-130	0.00
130-140	0.00
140-150	0.00
150-160	0.00
160-170	0.00
170-180	0.00



Mounting Height: 15 ft.

Grid Spacing: 5 ft.

In the interest of product improvement, BEGA reserves the right to make technical changes without notice.