

**Application**

Flush-mounted downlights create a very clean ceiling appearance for atriums, canopies, and other interior and exterior locations. Designed for use in pre-cast or cast-in-place concrete ceilings. Standard housing designed for use with formwork and no plaster finish. Select the appropriate housing option for use with a plaster finish.

**Materials**

Clear safety glass  
 Marine grade, copper free (≤0.3% copper content) A360.0 aluminum alloy  
 Stainless steel housing  
 Silicone applied robotically to casting, plasma treated for increased adhesion  
 Aluminum installation housing  
 Pure anodized aluminum reflector surface  
 Silicone optic with excellent high temperature and UV stability  
 BEGA Hybrid Optics®

**NRTL** listed to North American Standards, suitable for wet locations  
 Protection class IP 65

**Weight:** 7.9 lbs.

**Electrical**

Operating voltage 120-277V AC  
 Minimum start temperature -30° C  
 LED module wattage 24.1 W  
 System wattage 27.0 W  
 Controllability 0-10V, TRIAC, and ELV dimmable  
 Color rendering index Ra > 80  
 Luminaire lumens 2837 lm

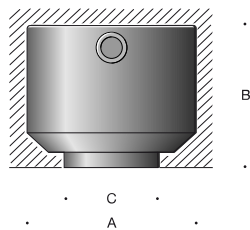
**LED color temperature**

4000K (K4)  
 3500K (K35)  
 3000K (K3)  
 2700K (K27)

**BEGA** can supply you with suitable LED replacement modules for up to 20 years after the purchase of LED luminaires - see website for details

**Finish**

Stainless steel finish. Custom colors not available.



**Downlight · Very wide beam**

	LED	□	A	B	C
<b>B24484</b>	24.1 W	63°	10 <sup>3</sup> / <sub>8</sub>	8 <sup>3</sup> / <sub>4</sub>	6

Type:

BEGA Product:

Project:

Modified:

**Available options**

BB24497 Installation housing, concrete with plaster (replaces included installation housing, pre-shippable)

**Included (available for pre-shipment)**

BB24485 Installation housing, concrete only

