

**Application**

Flush-mounted downlights create a very clean ceiling appearance for atriums, canopies, and other interior and exterior locations. Designed for use in pre-cast or cast-in-place concrete ceilings. Standard housing designed for use with formwork and no plaster finish. Select the appropriate housing option for use with a plaster finish.

**Materials**

- Clear safety glass
- Marine grade, copper free (≤0.3% copper content) A360.0 aluminum alloy
- Stainless steel housing
- Silicone applied robotically to casting, plasma treated for increased adhesion
- Aluminum installation housing
- Pure anodized aluminum reflector surface
- Silicone optic with excellent high temperature and UV stability

**NRTL** listed to North American Standards, suitable for wet locations  
Protection class IP 65

**Weight:** 7.9 lbs.

**Electrical**

Operating voltage	120-277VAC
Minimum start temperature	-30° C
LED module wattage	16.8W
System wattage	20.0W
Controllability	0-10V, TRIAC, and ELV dimmable
Color rendering index	Ra > 80
Luminaire lumens	1955lm
LED service life (L70)	60000hrs

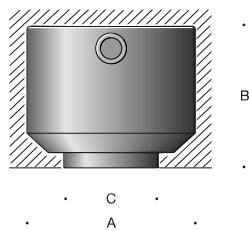
**LED color temperature**

- 4000K (K4)
- 3500K (K35)
- 3000K (K3)
- 2700K (K27)

**BEGA** can supply you with suitable LED replacement modules for up to 20 years after the purchase of LED luminaires - see website for details

**Finish**

Stainless steel finish. Custom colors not available.



**Downlight · Asymmetric wall washer**

	LED	□	A	B	C
<b>B24483</b>	16.8W	68° x 70°	10 <sup>3</sup> / <sub>8</sub>	8 <sup>3</sup> / <sub>4</sub>	6

Type:

BEGA Product:

Project:

Modified:

**Available options**

BB24497 Installation housing, concrete with plaster

**Included (available for pre-shipment)**

BB24485 Installation housing, concrete only

