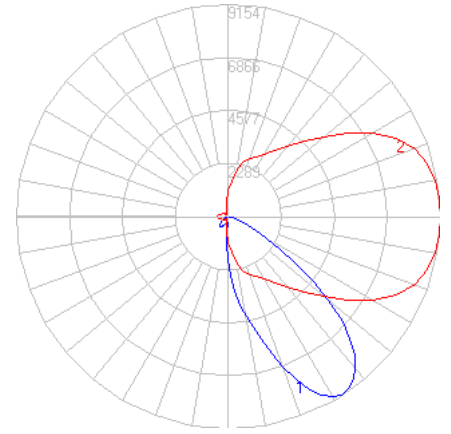


BEGA

Photometric Filename: 24317.ies

TEST: BE_24317
 TEST LAB: BEGA
 DATE: 4/5/2017
 LUMINAIRE: 24 317
 LAMP: 48W LED

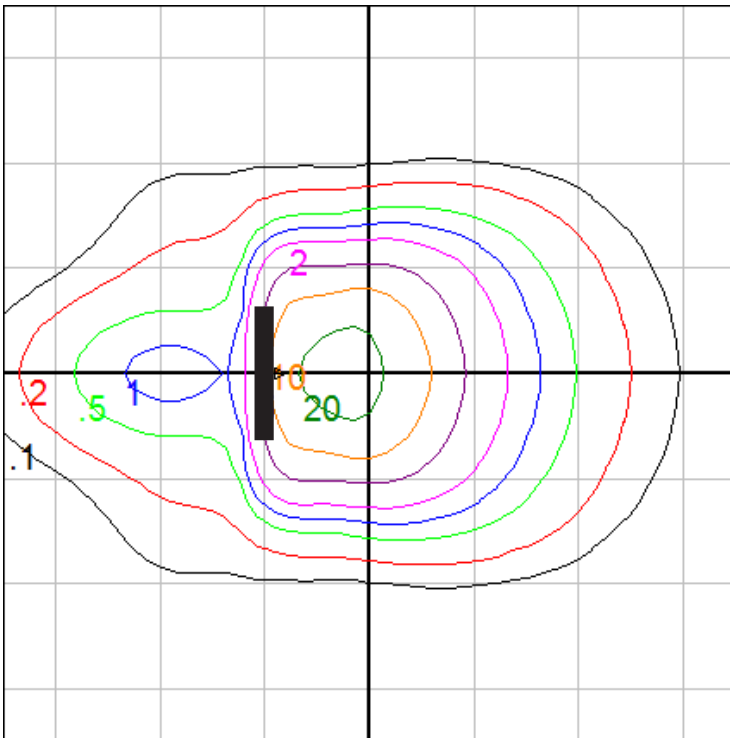


Characteristics

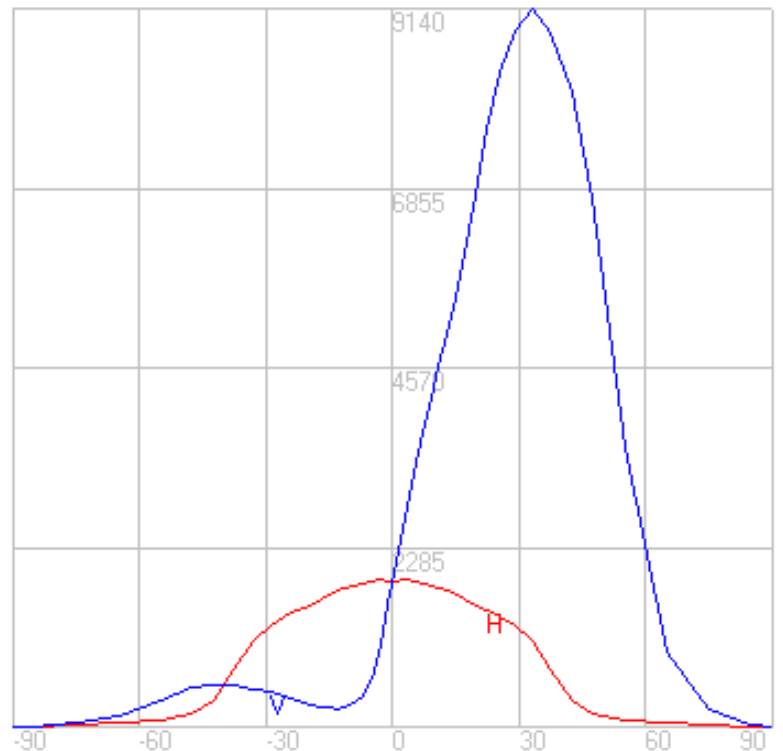
NEMA Type	5 H x 4 V
Maximum Candela	9139.5
Maximum Candela Angle	0 H 33 V
Horizontal Beam Angle (50%)	51.2
Vertical Beam Angle (50%)	41.7
Horizontal Field Angle (10%)	75.0
Vertical Field Angle (10%)	69.1
Lumens Per Lamp	N.A. (absolute)
Total Lamp Lumens	N.A. (absolute)
Beam Lumens	3338
Beam Efficiency	N.A.
Field Lumens	5454
Field Efficiency	N.A.
Spill Lumens	688
Luminaire Lumens	6141
Total Efficiency	N.A.
Total Luminaire Watts	55

Zonal Lumen Summary

Zone	Lumens
0-10	183.67
10-20	634.39
20-30	1229.39
30-40	1649.1
40-50	1405.00
50-60	711.29
60-70	220.82
70-80	60.61
80-90	7.27
90-100	0.00
100-110	0.00
110-120	0.00
120-130	0.00
130-140	0.00
140-150	0.00
150-160	0.00
160-170	0.00
170-180	0.00



Mounting Height = 15 ft. Grid Spacing = 10 ft.



In the interest of product improvement, BEGA reserves the right to make technical changes without notice.