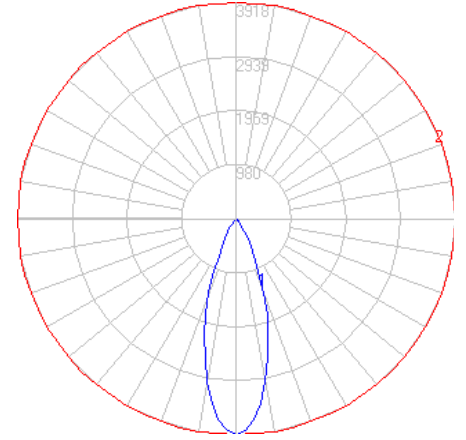


# BEGA

Photometric Filename: 24309.ies

TEST: BE\_24309  
 TEST LAB: BEGA  
 DATE: 5/8/2017  
 LUMINAIRE: 24 309  
 LAMP: 16W LED

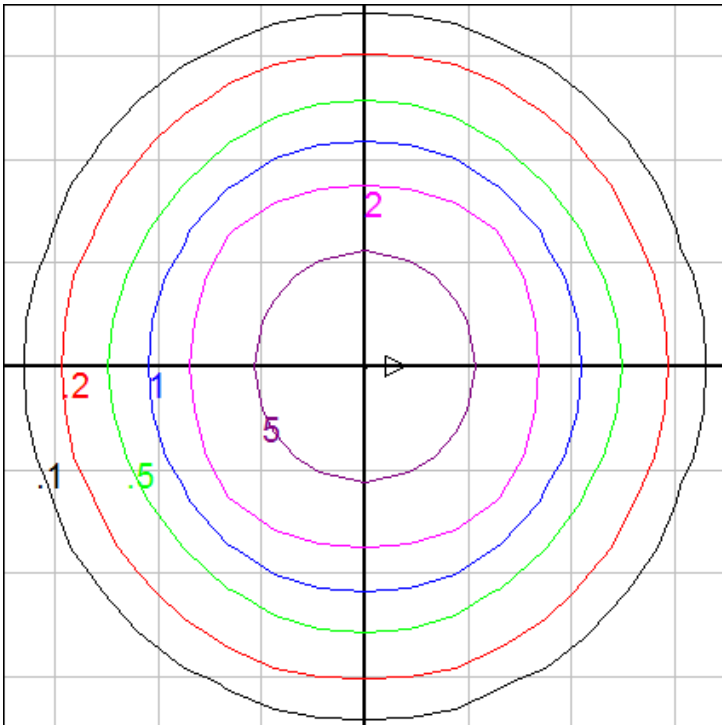


## Characteristics

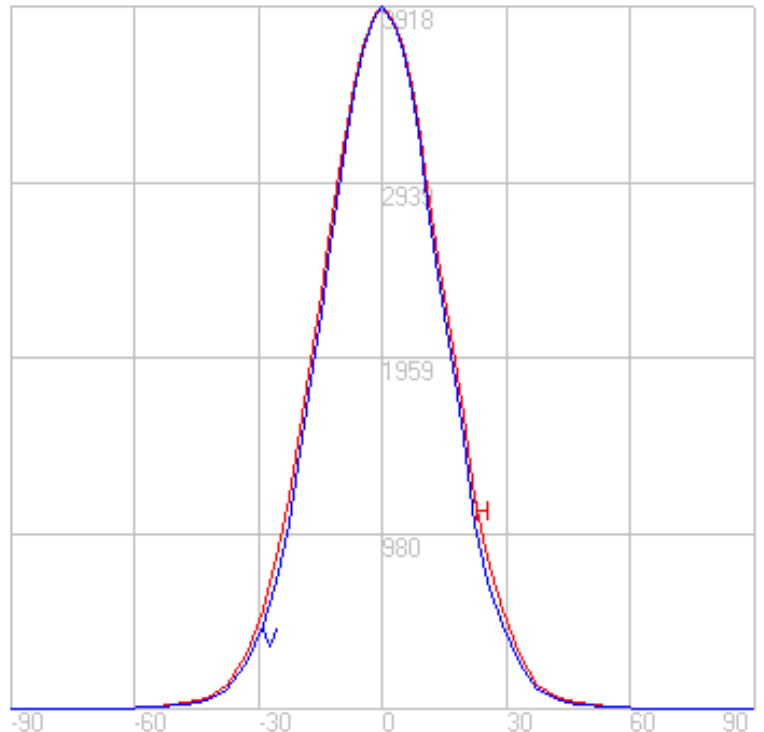
NEMA Type	4 H x 4 V
Maximum Candela	3918.1
Maximum Candela Angle	0 H 0 V
Horizontal Beam Angle (50%)	34.8
Vertical Beam Angle (50%)	33.3
Horizontal Field Angle (10%)	63.3
Vertical Field Angle (10%)	60.8
Lumens Per Lamp	N.A. (absolute)
Total Lamp Lumens	N.A. (absolute)
Beam Lumens	791
Beam Efficiency	N.A.
Field Lumens	1382
Field Efficiency	N.A.
Spill Lumens	177
Luminaire Lumens	1559
Total Efficiency	N.A.
Total Luminaire Watts	19

## Zonal Lumen Summary

Zone	Lumens
0-10	330.35
10-20	628.47
20-30	412.50
30-40	133.83
40-50	33.95
50-60	11.27
60-70	4.83
70-80	1.58
80-90	0.12
90-100	0.00
100-110	0.00
110-120	0.00
120-130	0.00
130-140	0.00
140-150	0.00
150-160	0.00
160-170	0.00
170-180	0.00



Mounting Height = 20 ft. Grid Spacing = 5 ft.



In the interest of product improvement, BEGA reserves the right to make technical changes without notice.