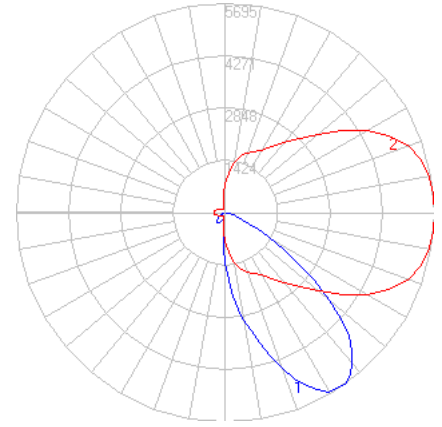
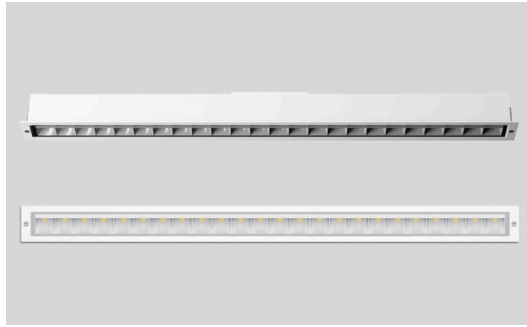


# BEGA

Photometric Filename: 24307.ies

TEST: BE\_24307  
 TEST LAB: BEGA  
 DATE: 4/27/2017  
 LUMINAIRE: 24 307  
 LAMP: 32W LED

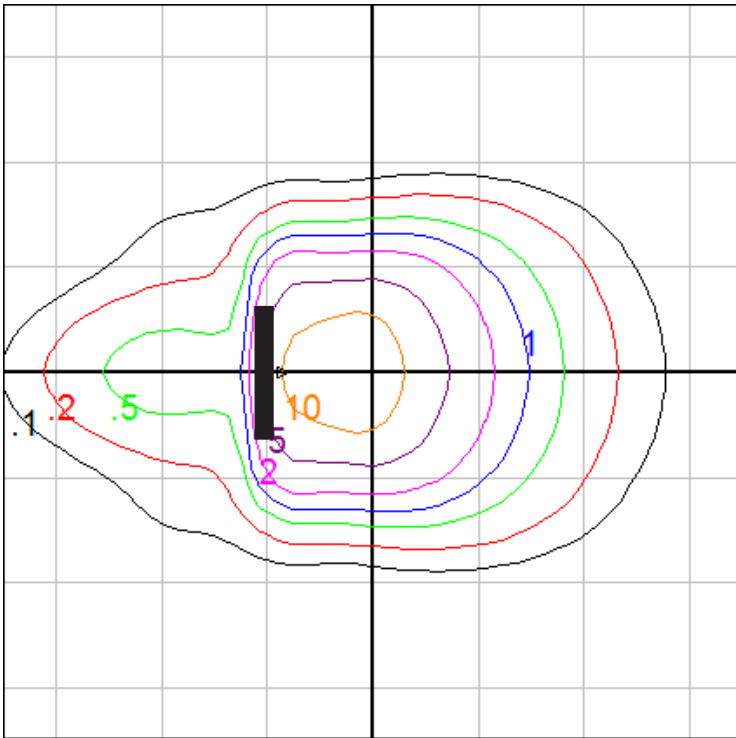


## Characteristics

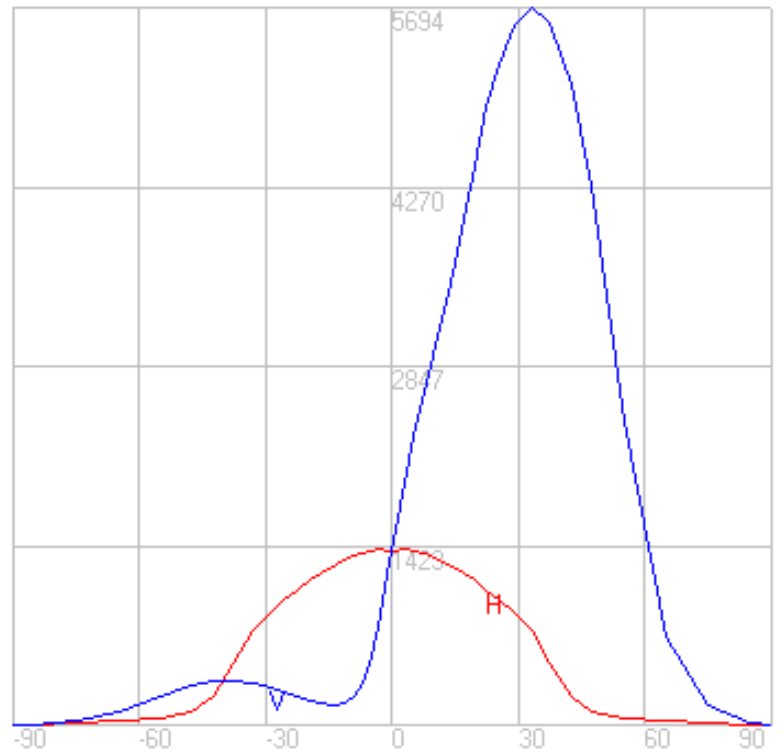
NEMA Type	5 H x 5 V
Maximum Candela	5693.6
Maximum Candela Angle	0 H 33 V
Horizontal Beam Angle (50%)	50.6
Vertical Beam Angle (50%)	44.3
Horizontal Field Angle (10%)	74.8
Vertical Field Angle (10%)	72.4
Lumens Per Lamp	N.A. (absolute)
Total Lamp Lumens	N.A. (absolute)
Beam Lumens	2175
Beam Efficiency	N.A.
Field Lumens	3536
Field Efficiency	N.A.
Spill Lumens	441
Luminaire Lumens	3977
Total Efficiency	N.A.
Total Luminaire Watts	36

## Zonal Lumen Summary

Zone	Lumens
0-10	133.92
10-20	433.32
20-30	796.69
30-40	1036.25
40-50	882.95
50-60	466.83
60-70	155.13
70-80	43.00
80-90	5.11
90-100	0.00
100-110	0.00
110-120	0.00
120-130	0.00
130-140	0.00
140-150	0.00
150-160	0.00
160-170	0.00
170-180	0.00



Mounting Height = 15 ft. Grid Spacing = 10 ft.



In the interest of product improvement, BEGA reserves the right to make technical changes without notice.