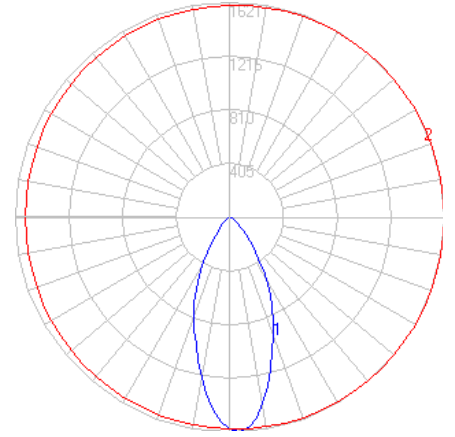


BEGA

Photometric Filename: 24219.ies

TEST: BE24219
 TEST LAB: BEGA
 DATE: 9/16/2016
 LUMINAIRE: 24 219
 LAMP: 14.9W LED



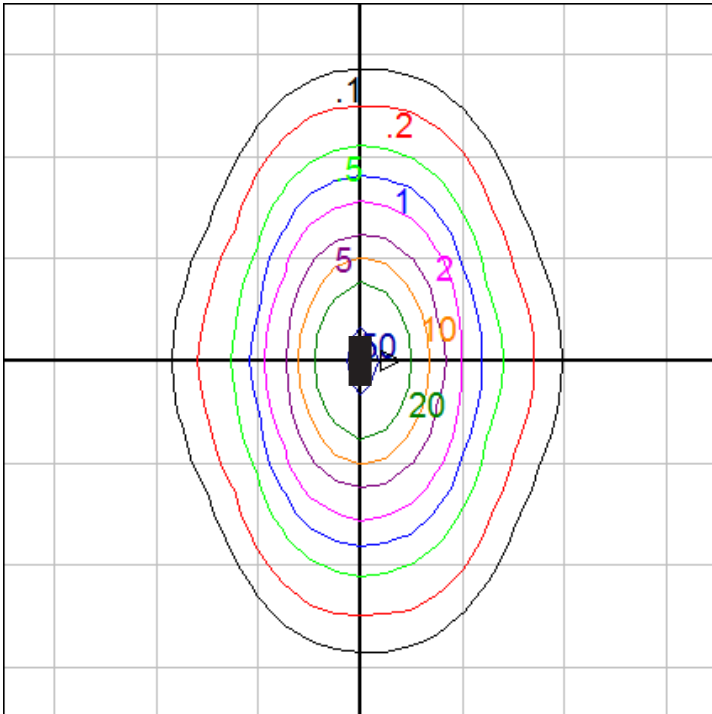
Characteristics

| | |
|------------------------------------|---------------------|
| IES Classification | Type I |
| Longitudinal Classification | Very Short |
| Lumens Per Lamp | N.A. (absolute) |
| Total Lamp Lumens | N.A. (absolute) |
| Luminaire Lumens | 1796 |
| Downward Total Efficiency | N.A. |
| Total Luminaire Efficiency | N.A. |
| Luminaire Efficacy Rating (LER) | 100 |
| Total Luminaire Watts | 18 |
| Ballast Factor | 1.00 |
| Upward Waste Light Ratio | 0.00 |
| Max. Cd. | 1620.7 (360H, 2.5V) |
| Max. Cd. (<90 Vert.) | 1620.7 (360H, 2.5V) |
| Max. Cd. (At 90 Deg. Vert.) | .1 (0.0%Lum) |
| Max. Cd. (80 to <90 Deg. Vert.) | 8 (0.4%Lum) |
| Cutoff Classification (deprecated) | N.A. (absolute) |

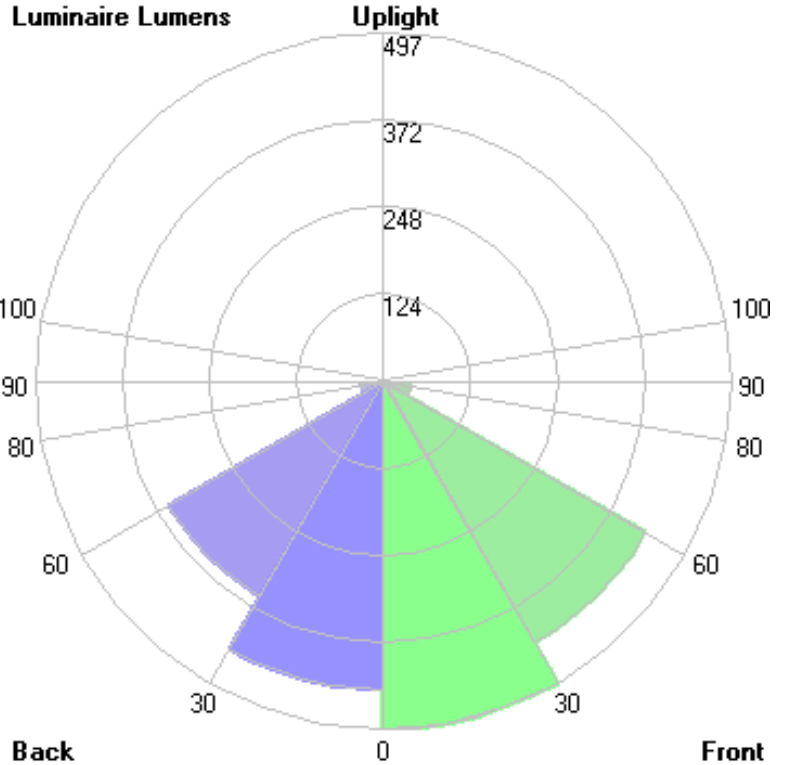
Lum. Classification System (LCS)

| LCS Zone | Lumens | %Lamp | %Lum |
|--------------|---------------|-------------|--------------|
| FL (0-30) | 496.6 | N.A. | 27.7 |
| FM (30-60) | 431.7 | N.A. | 24.0 |
| FH (60-80) | 39.8 | N.A. | 2.2 |
| FVH (80-90) | 0.5 | N.A. | 0.0 |
| BL (0-30) | 440.5 | N.A. | 24.5 |
| BM (30-60) | 354.0 | N.A. | 19.7 |
| BH (60-80) | 32.2 | N.A. | 1.8 |
| BVH (80-90) | 0.3 | N.A. | 0.0 |
| UL (90-100) | 0.0 | N.A. | 0.0 |
| UH (100-180) | 0.0 | N.A. | 0.0 |
| Total | 1795.6 | N.A. | 100.0 |

BUG Rating B1-U0-G0



Wall Mount - Isofootcandle grid on floor
 Mounting Height = 5 ft. Grid Spacing = 5 ft.



In the interest of product improvement, BEGA reserves the right to make technical changes without notice.