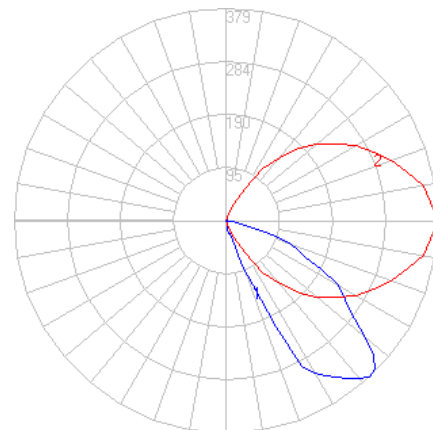
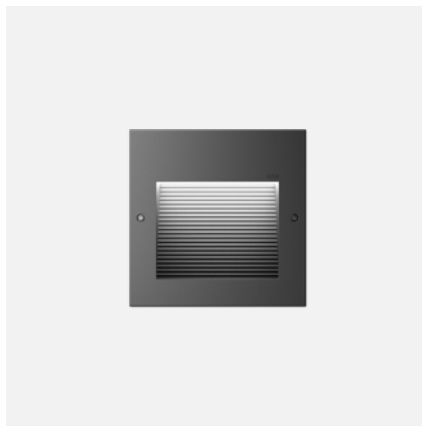


BEGA

File: 24202K4_BEGA_IES.ies

TEST: BE_24202K4
 TEST LAB: BEGA
 DATE: 3/31/2017
 LUMINAIRE: 24 202K4
 LAMP: 2.9W LED



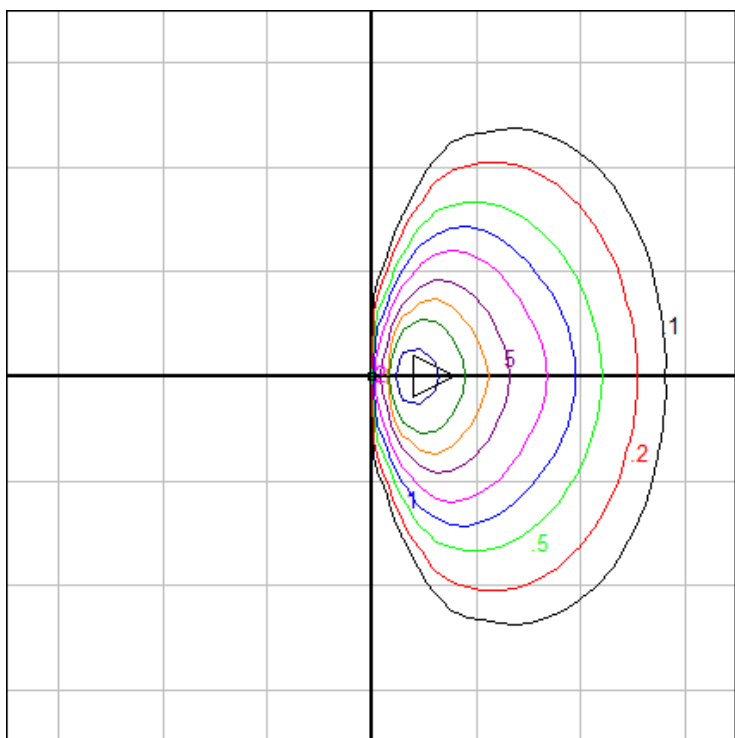
Characteristics

IES Classification	Type III
Longitudinal Classification	Very Short
Lumens Per Lamp	N.A. (absolute)
Total Lamp Lumens	N.A. (absolute)
Luminaire Lumens	274
Downward Total Efficiency	N.A.
Total Luminaire Efficiency	N.A.
Luminaire Efficacy Rating (LER)	55
Total Luminaire Watts	5
Ballast Factor	1.00
Upward Waste Light Ratio	0.00
Max. Cd.	379.2 (0H, 42.5V)
Max. Cd. (<90 Vert.)	379.2 (0H, 42.5V)
Max. Cd. (At 90 Deg. Vert.)	1.4 (0.5%Lum)
Max. Cd. (80 to <90 Deg. Vert.)	19.8 (7.2%Lum)
Cutoff Classification (deprecated)	N.A. (absolute)

Lum. Classification System (LCS)

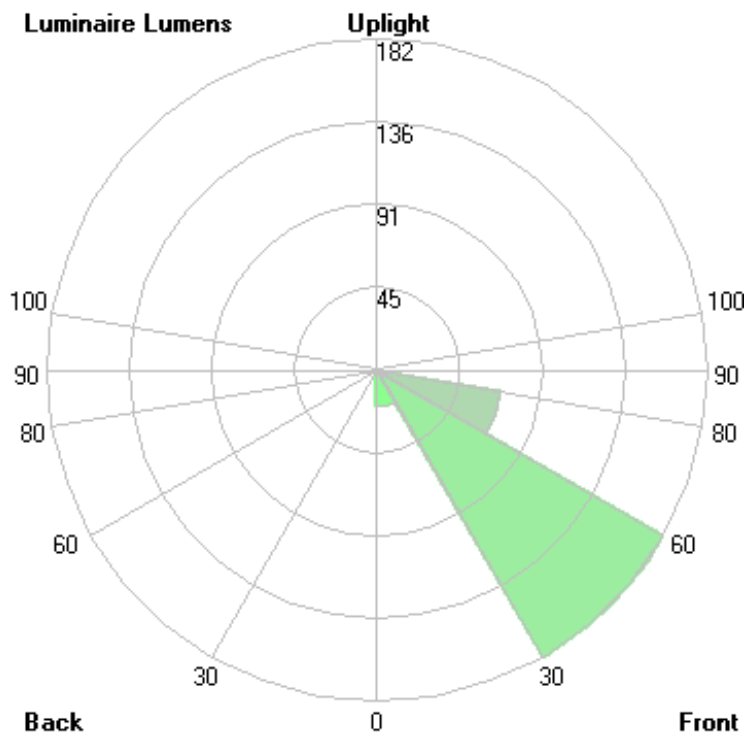
LCS Zone	Lumens	%Lamp	%Lum
FL (0-30)	20.2	N.A.	7.4
FM (30-60)	181.8	N.A.	66.4
FH (60-80)	69.1	N.A.	25.2
FVH (80-90)	2.4	N.A.	0.9
BL (0-30)	0.0	N.A.	0.0
BM (30-60)	0.0	N.A.	0.0
BH (60-80)	0.0	N.A.	0.0
BVH (80-90)	0.0	N.A.	0.0
UL (90-100)	0.3	N.A.	0.1
UH (100-180)	0.1	N.A.	0.0
Total	273.9	N.A.	100.0

BUG Rating B0-U1-G0



Mounting Height: 1.5 ft.

Grid Spacing: 2.5 ft.



In the interest of product improvement, BEGA reserves the right to make technical changes without notice.

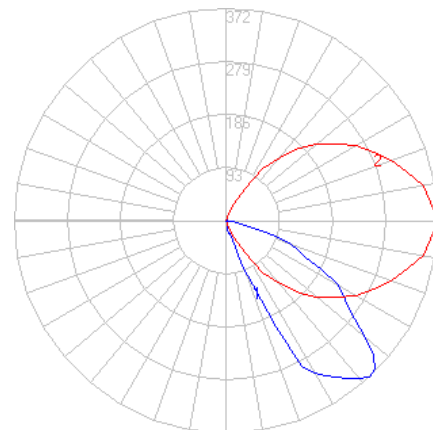
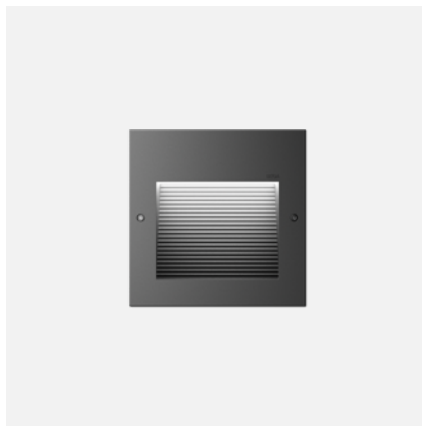
BEGA 1000 Bega Way, Carpinteria, CA 93013 (805)684-0533 Fax (805)566-9474 www.bega-us.com © Copyright BEGA-US 2020

11/17/2020

BEGA

File: 24202K35_BEGA_IES.ies

TEST: BE_24202K4
 TEST LAB: BEGA
 DATE: 3/31/2017
 LUMINAIRE: 24 202K35
 LAMP: 2.9W LED



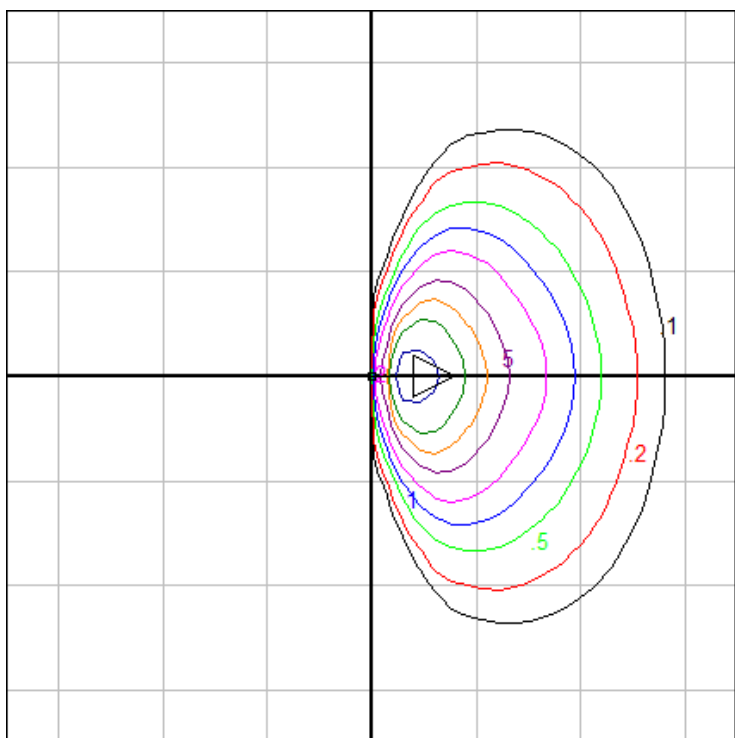
Characteristics

IES Classification	Type III
Longitudinal Classification	Very Short
Lumens Per Lamp	N.A. (absolute)
Total Lamp Lumens	N.A. (absolute)
Luminaire Lumens	268
Downward Total Efficiency	N.A.
Total Luminaire Efficiency	N.A.
Luminaire Efficacy Rating (LER)	54
Total Luminaire Watts	5
Ballast Factor	1.00
Upward Waste Light Ratio	0.00
Max. Cd.	371.616 (0H, 42.5V)
Max. Cd. (<90 Vert.)	371.616 (0H, 42.5V)
Max. Cd. (At 90 Deg. Vert.)	1.372 (0.5%Lum)
Max. Cd. (80 to <90 Deg. Vert.)	19.404 (7.2%Lum)
Cutoff Classification (deprecated)	N.A. (absolute)

Lum. Classification System (LCS)

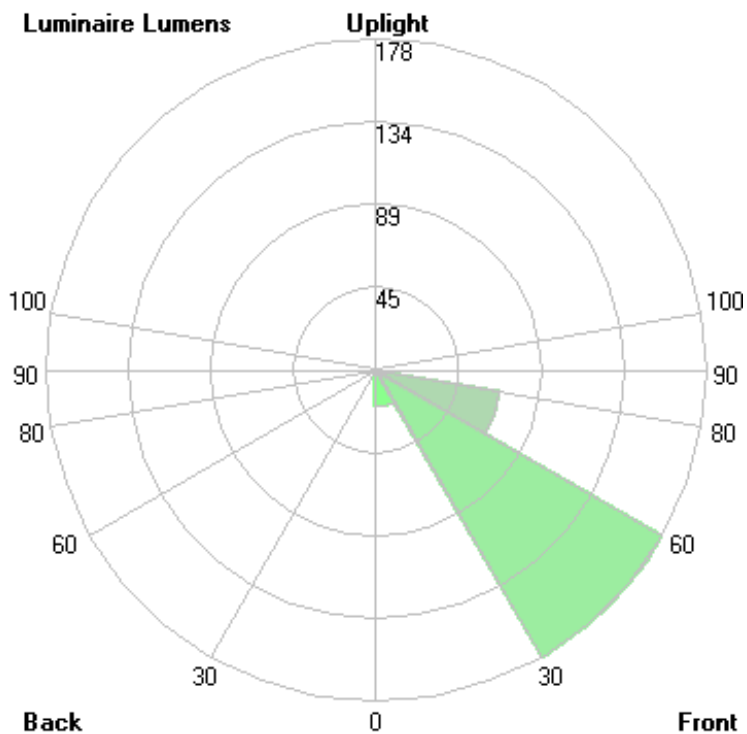
LCS Zone	Lumens	%Lamp	%Lum
FL (0-30)	19.8	N.A.	7.4
FM (30-60)	178.2	N.A.	66.4
FH (60-80)	67.7	N.A.	25.2
FVH (80-90)	2.3	N.A.	0.9
BL (0-30)	0.0	N.A.	0.0
BM (30-60)	0.0	N.A.	0.0
BH (60-80)	0.0	N.A.	0.0
BVH (80-90)	0.0	N.A.	0.0
UL (90-100)	0.3	N.A.	0.1
UH (100-180)	0.1	N.A.	0.0
Total	268.4	N.A.	100.0

BUG Rating B0-U1-G0



Mounting Height: 1.5 ft.

Grid Spacing: 2.5 ft.



In the interest of product improvement, BEGA reserves the right to make technical changes without notice.

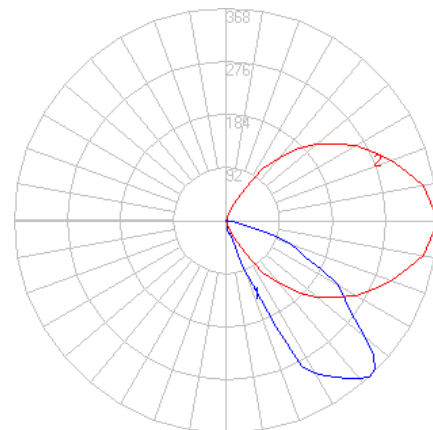
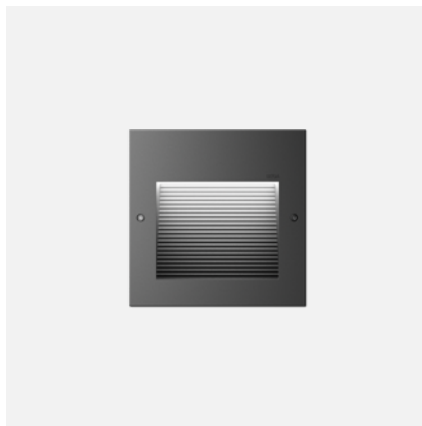
BEGA 1000 Bega Way, Carpinteria, CA 93013 (805)684-0533 Fax (805)566-9474 www.bega-us.com © Copyright BEGA-US 2020

11/17/2020

BEGA

File: 24202K3_BEGA_IES.ies

TEST: BE_24202K4
 TEST LAB: BEGA
 DATE: 3/31/2017
 LUMINAIRE: 24 202K3
 LAMP: 2.9W LED



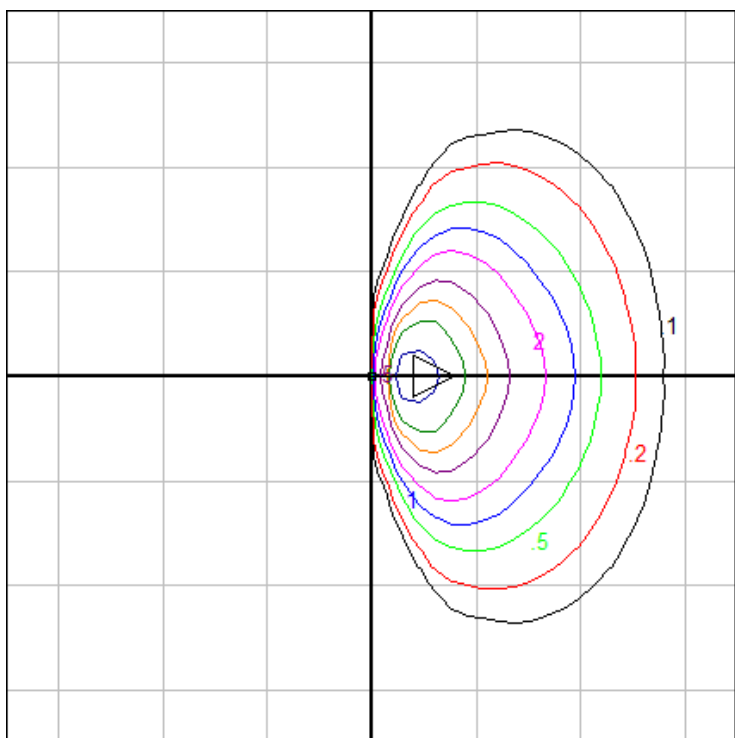
Characteristics

IES Classification	Type III
Longitudinal Classification	Very Short
Lumens Per Lamp	N.A. (absolute)
Total Lamp Lumens	N.A. (absolute)
Luminaire Lumens	266
Downward Total Efficiency	N.A.
Total Luminaire Efficiency	N.A.
Luminaire Efficacy Rating (LER)	53
Total Luminaire Watts	5
Ballast Factor	1.00
Upward Waste Light Ratio	0.00
Max. Cd.	367.824 (0H, 42.5V)
Max. Cd. (<90 Vert.)	367.824 (0H, 42.5V)
Max. Cd. (At 90 Deg. Vert.)	1.358 (0.5%Lum)
Max. Cd. (80 to <90 Deg. Vert.)	19.206 (7.2%Lum)
Cutoff Classification (deprecated)	N.A. (absolute)

Lum. Classification System (LCS)

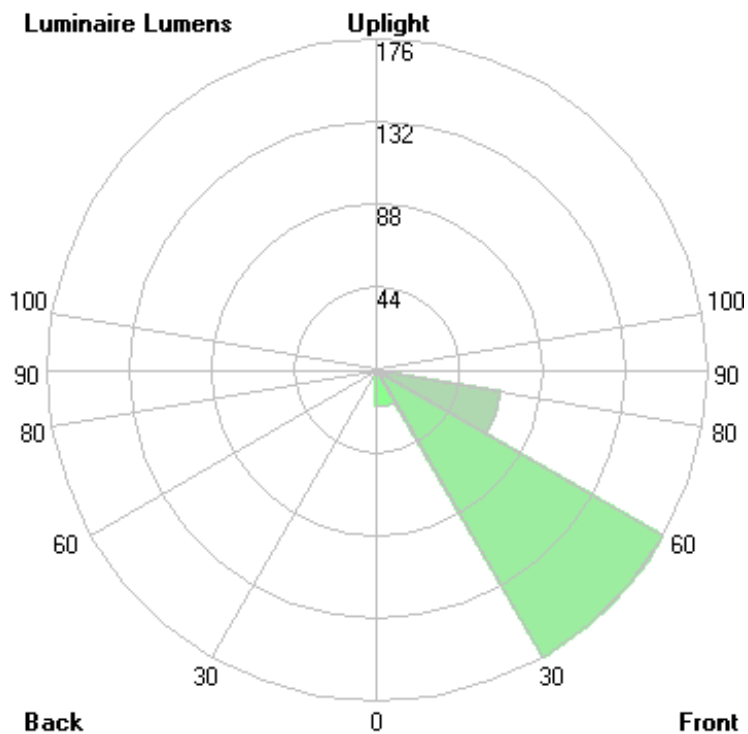
LCS Zone	Lumens	%Lamp	%Lum
FL (0-30)	19.6	N.A.	7.4
FM (30-60)	176.4	N.A.	66.4
FH (60-80)	67.0	N.A.	25.2
FVH (80-90)	2.3	N.A.	0.9
BL (0-30)	0.0	N.A.	0.0
BM (30-60)	0.0	N.A.	0.0
BH (60-80)	0.0	N.A.	0.0
BVH (80-90)	0.0	N.A.	0.0
UL (90-100)	0.2	N.A.	0.1
UH (100-180)	0.1	N.A.	0.0
Total	265.6	N.A.	100.0

BUG Rating B0-U1-G0



Mounting Height: 1.5 ft.

Grid Spacing: 2.5 ft.



In the interest of product improvement, BEGA reserves the right to make technical changes without notice.

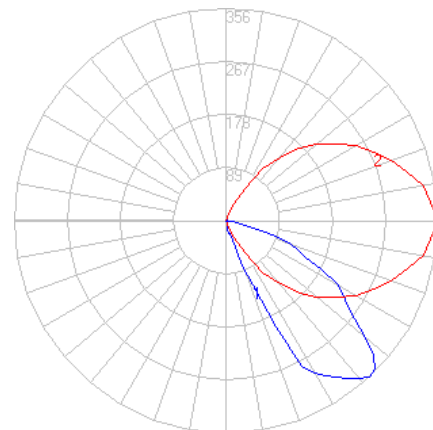
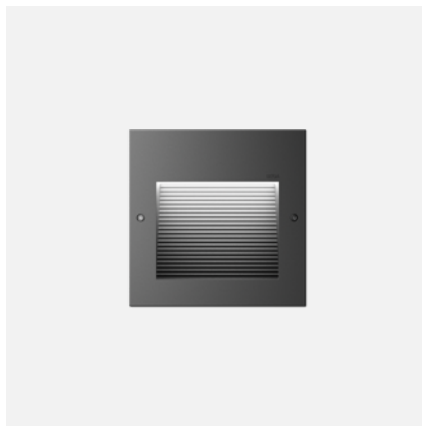
BEGA 1000 Bega Way, Carpinteria, CA 93013 (805)684-0533 Fax (805)566-9474 www.bega-us.com © Copyright BEGA-US 2020

11/17/2020

BEGA

File: 24202K27_BEGA_IES.ies

TEST: BE_24202K4
 TEST LAB: BEGA
 DATE: 3/31/2017
 LUMINAIRE: 24 202K27
 LAMP: 2.9W LED



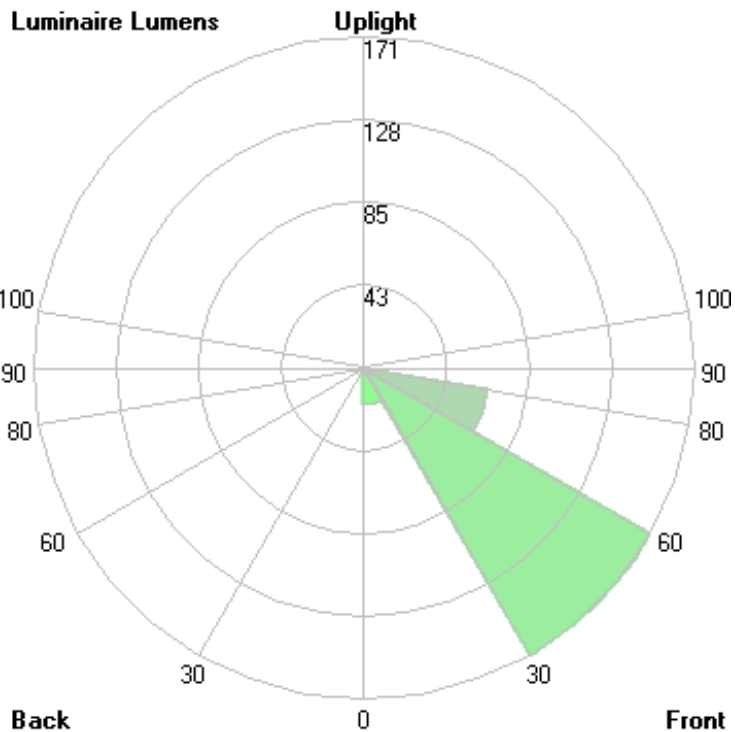
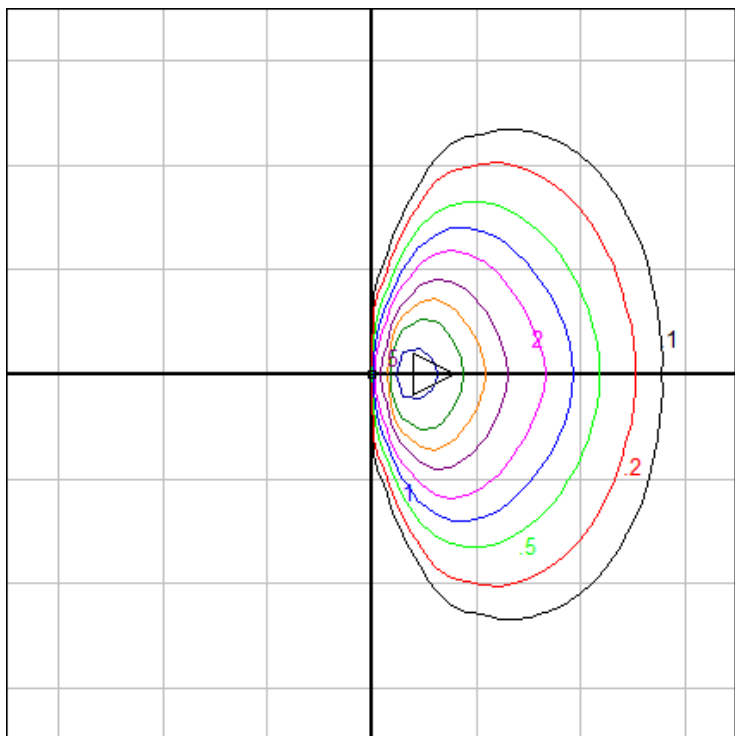
Characteristics

IES Classification	Type III
Longitudinal Classification	Very Short
Lumens Per Lamp	N.A. (absolute)
Total Lamp Lumens	N.A. (absolute)
Luminaire Lumens	257
Downward Total Efficiency	N.A.
Total Luminaire Efficiency	N.A.
Luminaire Efficacy Rating (LER)	51
Total Luminaire Watts	5
Ballast Factor	1.00
Upward Waste Light Ratio	0.00
Max. Cd.	356.448 (0H, 42.5V)
Max. Cd. (<90 Vert.)	356.448 (0H, 42.5V)
Max. Cd. (At 90 Deg. Vert.)	1.316 (0.5%Lum)
Max. Cd. (80 to <90 Deg. Vert.)	18.612 (7.2%Lum)
Cutoff Classification (deprecated)	N.A. (absolute)

Lum. Classification System (LCS)

LCS Zone	Lumens	%Lamp	%Lum
FL (0-30)	19.0	N.A.	7.4
FM (30-60)	170.9	N.A.	66.4
FH (60-80)	64.9	N.A.	25.2
FVH (80-90)	2.2	N.A.	0.9
BL (0-30)	0.0	N.A.	0.0
BM (30-60)	0.0	N.A.	0.0
BH (60-80)	0.0	N.A.	0.0
BVH (80-90)	0.0	N.A.	0.0
UL (90-100)	0.2	N.A.	0.1
UH (100-180)	0.1	N.A.	0.0
Total	257.3	N.A.	100.0

BUG Rating B0-U1-G0



Mounting Height: 1.5 ft.

Grid Spacing: 2.5 ft.

In the interest of product improvement, BEGA reserves the right to make technical changes without notice.

BEGA 1000 Bega Way, Carpinteria, CA 93013 (805)684-0533 Fax (805)566-9474 www.bega-us.com © Copyright BEGA-US 2020

11/17/2020