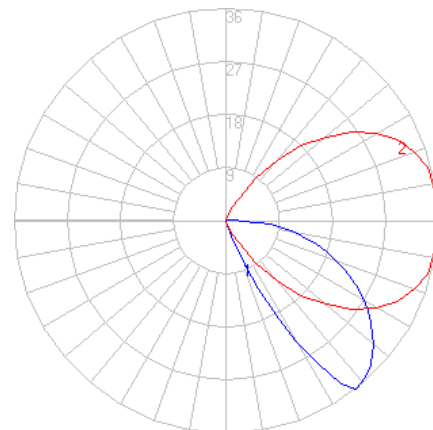
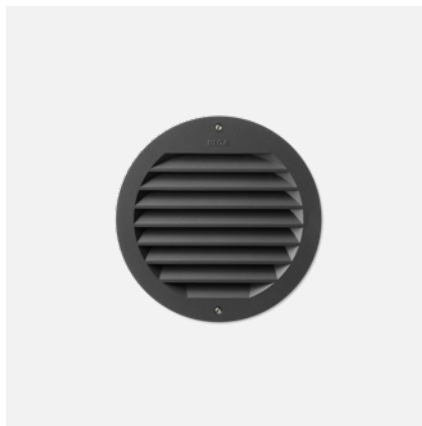


# BEGA

File: 24102K4\_BEGA\_IES.ies

TEST: BE\_24102K4  
 TEST LAB: BEGA  
 DATE: 2/23/2016  
 LUMINAIRE: 24 102K4  
 LAMP: 3.7W LED



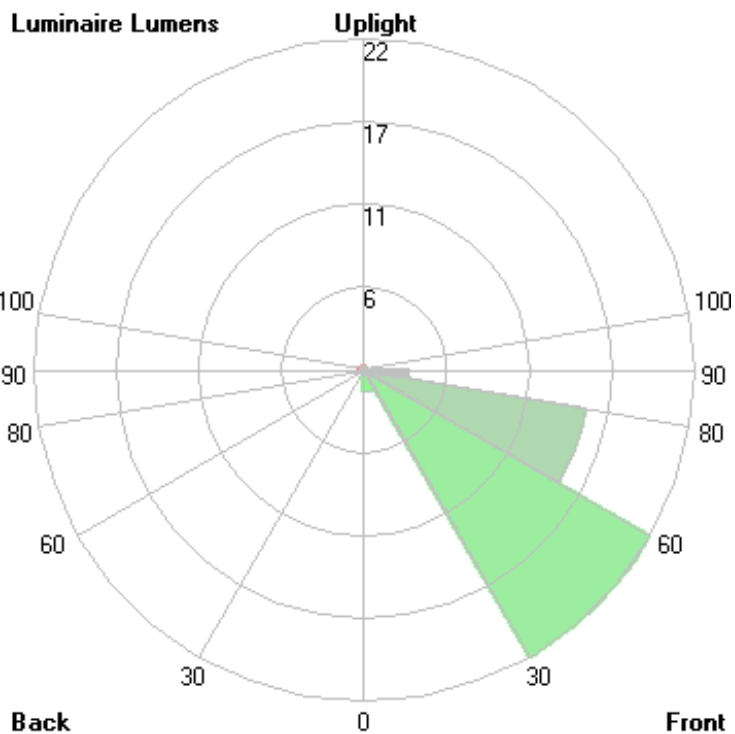
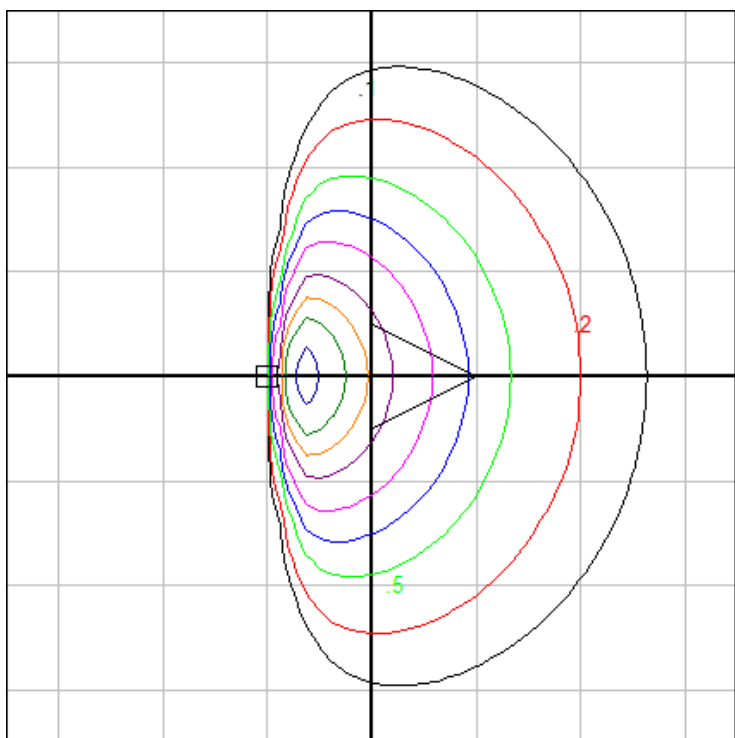
### Characteristics

IES Classification	Type IV
Longitudinal Classification	Very Short
Lumens Per Lamp	N.A. (absolute)
Total Lamp Lumens	N.A. (absolute)
Luminaire Lumens	42
Downward Total Efficiency	N.A.
Total Luminaire Efficiency	N.A.
Luminaire Efficacy Rating (LER)	7
Total Luminaire Watts	6
Ballast Factor	1.00
Upward Waste Light Ratio	0.01
Max. Cd.	35.9 (0H, 37.5V)
Max. Cd. (<90 Vert.)	35.9 (0H, 37.5V)
Max. Cd. (At 90 Deg. Vert.)	3.1 (7.4%Lum)
Max. Cd. (80 to <90 Deg. Vert.)	11.7 (27.9%Lum)
Cutoff Classification (deprecated)	N.A. (absolute)

### Lum. Classification System (LCS)

LCS Zone	Lumens	%Lamp	%Lum
FL (0-30)	1.4	N.A.	3.4
FM (30-60)	22.0	N.A.	52.6
FH (60-80)	15.0	N.A.	35.7
FVH (80-90)	3.0	N.A.	7.1
BL (0-30)	0.0	N.A.	0.0
BM (30-60)	0.0	N.A.	0.0
BH (60-80)	0.0	N.A.	0.0
BVH (80-90)	0.0	N.A.	0.0
UL (90-100)	0.3	N.A.	0.8
UH (100-180)	0.2	N.A.	0.6
Total	41.9	N.A.	100.0

**BUG Rating B0-U1-G0**



Mounting Height: 0.5 ft.

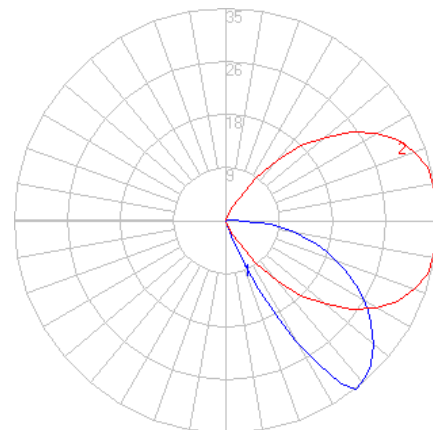
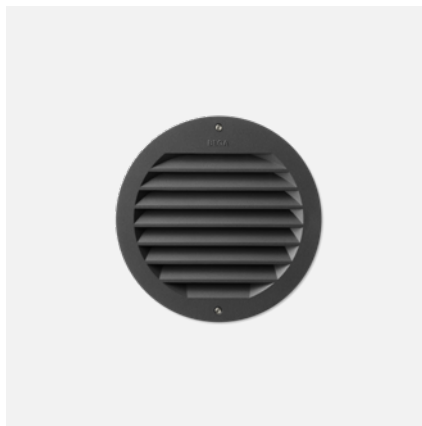
Grid Spacing: 1 ft.

In the interest of product improvement, BEGA reserves the right to make technical changes without notice.

# BEGA

File: 24102K35\_BEGA\_IES.ies

TEST: BE\_24102K4  
 TEST LAB: BEGA  
 DATE: 2/23/2016  
 LUMINAIRE: 24 102K35  
 LAMP: 3.7W LED



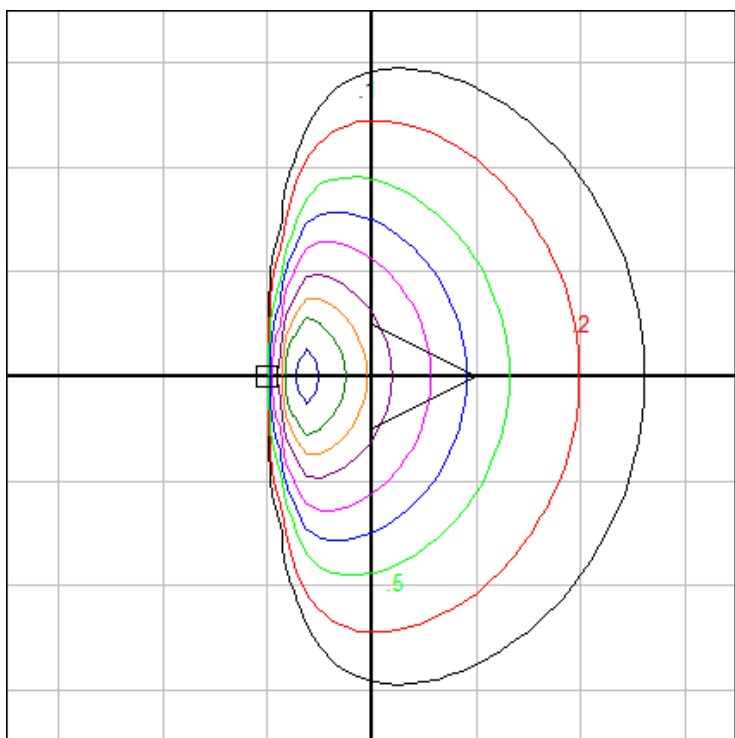
### Characteristics

IES Classification	Type IV
Longitudinal Classification	Very Short
Lumens Per Lamp	N.A. (absolute)
Total Lamp Lumens	N.A. (absolute)
Luminaire Lumens	41
Downward Total Efficiency	N.A.
Total Luminaire Efficiency	N.A.
Luminaire Efficacy Rating (LER)	7
Total Luminaire Watts	6
Ballast Factor	1.00
Upward Waste Light Ratio	0.01
Max. Cd.	35.182 (0H, 37.5V)
Max. Cd. (<90 Vert.)	35.182 (0H, 37.5V)
Max. Cd. (At 90 Deg. Vert.)	3.038 (7.4%Lum)
Max. Cd. (80 to <90 Deg. Vert.)	11.466 (28.0%Lum)
Cutoff Classification (deprecated)	N.A. (absolute)

### Lum. Classification System (LCS)

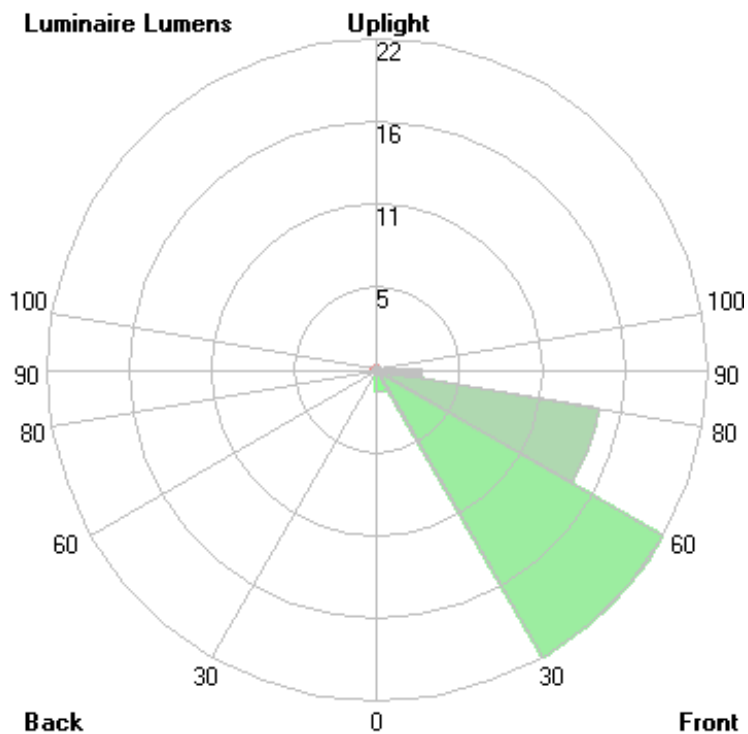
LCS Zone	Lumens	%Lamp	%Lum
FL (0-30)	1.4	N.A.	3.4
FM (30-60)	21.6	N.A.	52.6
FH (60-80)	14.7	N.A.	35.7
FVH (80-90)	2.9	N.A.	7.1
BL (0-30)	0.0	N.A.	0.0
BM (30-60)	0.0	N.A.	0.0
BH (60-80)	0.0	N.A.	0.0
BVH (80-90)	0.0	N.A.	0.0
UL (90-100)	0.3	N.A.	0.8
UH (100-180)	0.2	N.A.	0.6
Total	41.1	N.A.	100.0

**BUG Rating B0-U1-G0**



Mounting Height: 0.5 ft.

Grid Spacing: 1 ft.

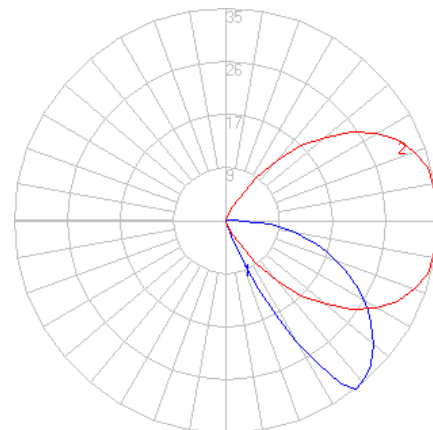
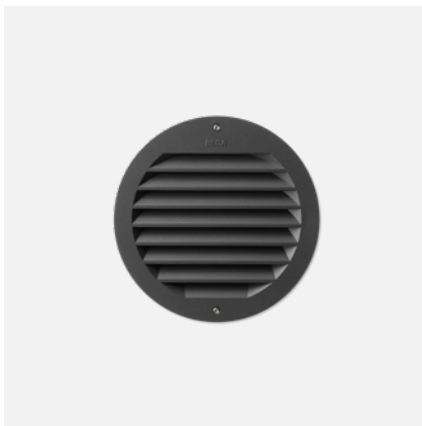


In the interest of product improvement, BEGA reserves the right to make technical changes without notice.

# BEGA

File: 24102K3\_BEGA\_IES.ies

TEST: BE\_24102K4  
 TEST LAB: BEGA  
 DATE: 2/23/2016  
 LUMINAIRE: 24 102K3  
 LAMP: 3.7W LED



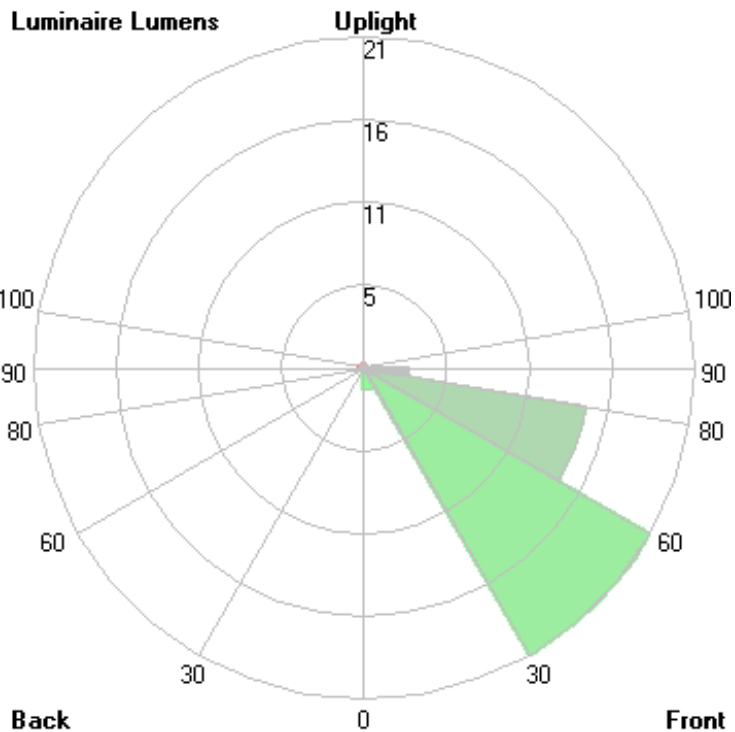
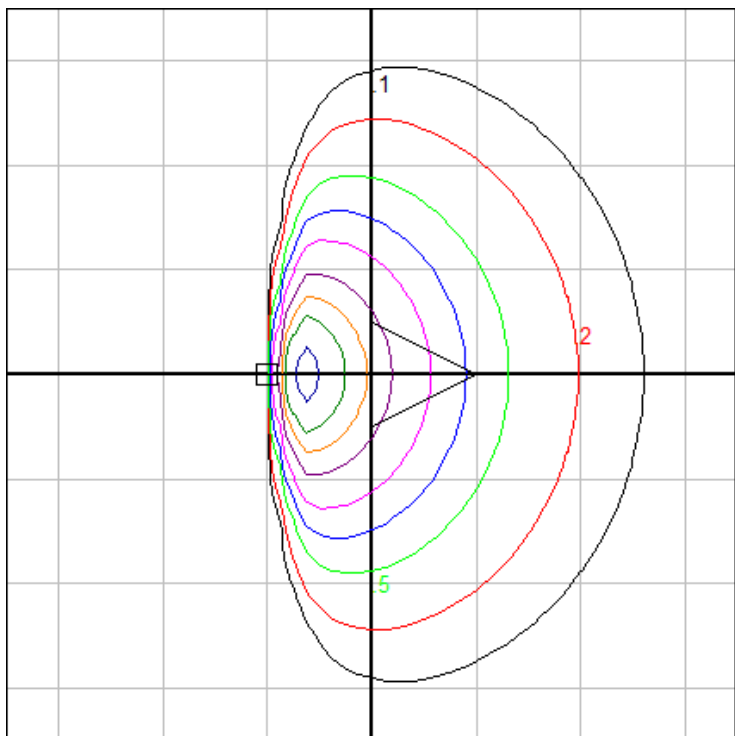
### Characteristics

IES Classification	Type IV
Longitudinal Classification	Very Short
Lumens Per Lamp	N.A. (absolute)
Total Lamp Lumens	N.A. (absolute)
Luminaire Lumens	41
Downward Total Efficiency	N.A.
Total Luminaire Efficiency	N.A.
Luminaire Efficacy Rating (LER)	7
Total Luminaire Watts	6
Ballast Factor	1.00
Upward Waste Light Ratio	0.01
Max. Cd.	34.823 (0H, 37.5V)
Max. Cd. (<90 Vert.)	34.823 (0H, 37.5V)
Max. Cd. (At 90 Deg. Vert.)	3.007 (7.3%Lum)
Max. Cd. (80 to <90 Deg. Vert.)	11.349 (27.7%Lum)
Cutoff Classification (deprecated)	N.A. (absolute)

### Lum. Classification System (LCS)

LCS Zone	Lumens	%Lamp	%Lum
FL (0-30)	1.4	N.A.	3.4
FM (30-60)	21.4	N.A.	52.5
FH (60-80)	14.5	N.A.	35.7
FVH (80-90)	2.9	N.A.	7.1
BL (0-30)	0.0	N.A.	0.0
BM (30-60)	0.0	N.A.	0.0
BH (60-80)	0.0	N.A.	0.0
BVH (80-90)	0.0	N.A.	0.0
UL (90-100)	0.3	N.A.	0.8
UH (100-180)	0.2	N.A.	0.6
Total	40.7	N.A.	100.0

**BUG Rating B0-U1-G0**



Mounting Height: 0.5 ft.

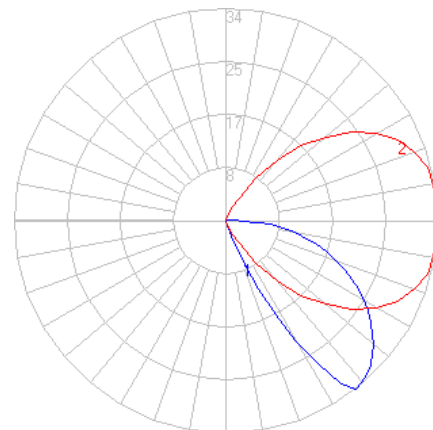
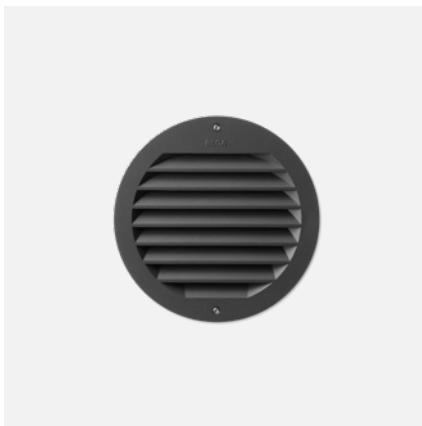
Grid Spacing: 1 ft.

In the interest of product improvement, BEGA reserves the right to make technical changes without notice.

# BEGA

File: 24102K27\_BEGA\_IES.ies

TEST: BE\_24102K4  
 TEST LAB: BEGA  
 DATE: 2/23/2016  
 LUMINAIRE: 24 102K27  
 LAMP: 3.7W LED



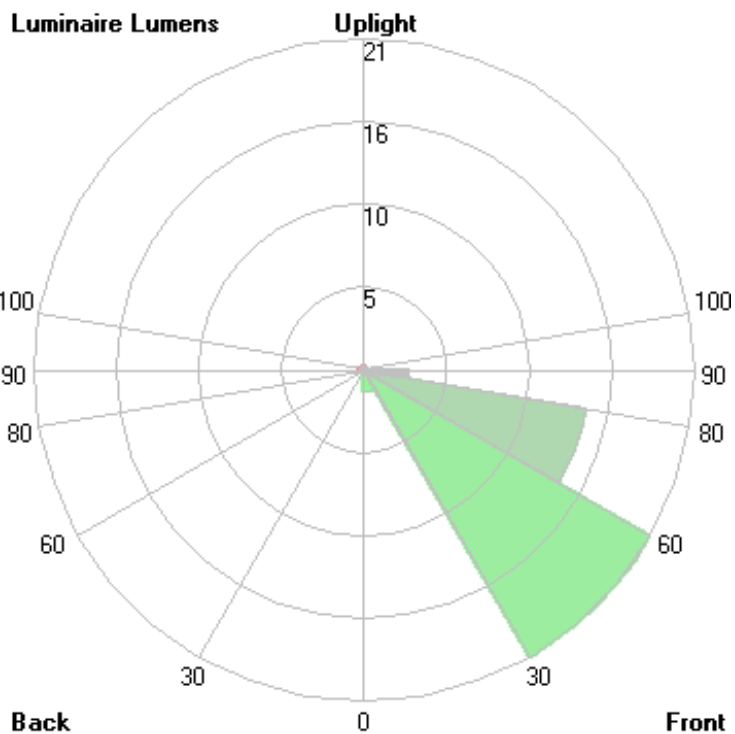
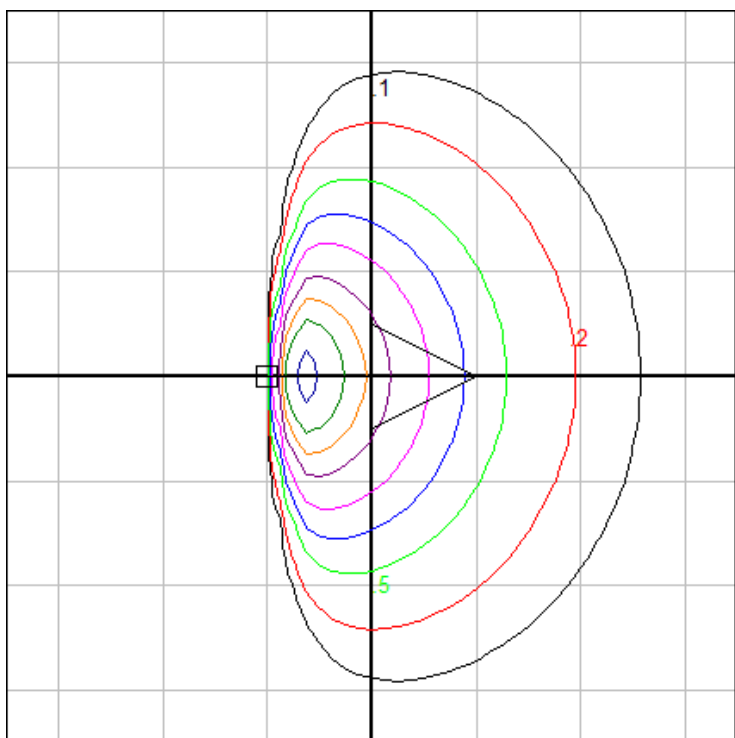
### Characteristics

IES Classification	Type IV
Longitudinal Classification	Very Short
Lumens Per Lamp	N.A. (absolute)
Total Lamp Lumens	N.A. (absolute)
Luminaire Lumens	39
Downward Total Efficiency	N.A.
Total Luminaire Efficiency	N.A.
Luminaire Efficacy Rating (LER)	7
Total Luminaire Watts	6
Ballast Factor	1.00
Upward Waste Light Ratio	0.01
Max. Cd.	33.746 (0H, 37.5V)
Max. Cd. (<90 Vert.)	33.746 (0H, 37.5V)
Max. Cd. (At 90 Deg. Vert.)	2.914 (7.5%Lum)
Max. Cd. (80 to <90 Deg. Vert.)	10.998 (28.2%Lum)
Cutoff Classification (deprecated)	N.A. (absolute)

### Lum. Classification System (LCS)

LCS Zone	Lumens	%Lamp	%Lum
FL (0-30)	1.3	N.A.	3.4
FM (30-60)	20.7	N.A.	52.5
FH (60-80)	14.1	N.A.	35.7
FVH (80-90)	2.8	N.A.	7.1
BL (0-30)	0.0	N.A.	0.0
BM (30-60)	0.0	N.A.	0.0
BH (60-80)	0.0	N.A.	0.0
BVH (80-90)	0.0	N.A.	0.0
UL (90-100)	0.3	N.A.	0.8
UH (100-180)	0.2	N.A.	0.6
Total	39.4	N.A.	100.0

**BUG Rating B0-U1-G0**



Mounting Height: 0.5 ft.

Grid Spacing: 1 ft.

In the interest of product improvement, BEGA reserves the right to make technical changes without notice.

BEGA 1000 Bega Way, Carpinteria, CA 93013 (805)684-0533 Fax (805)566-9474 www.bega-us.com © Copyright BEGA-US 2020

11/4/2020