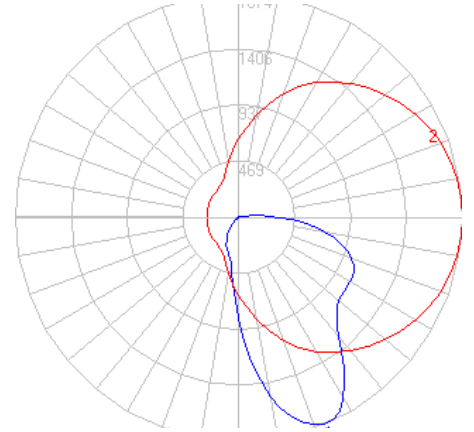
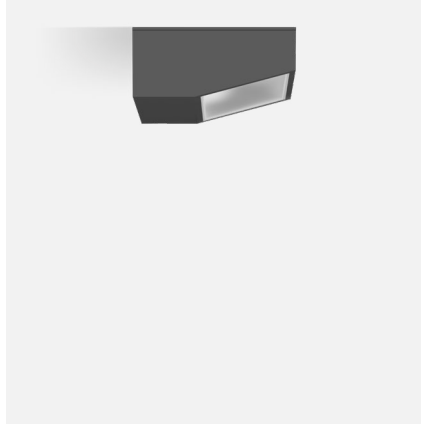


BEGA

File: 24089K4_BEGA_IES.ies

TEST: BE_24089K4
 TEST LAB: BEGA
 DATE: 05/25/2018
 LUMINAIRE: 24 089K4
 LAMP: 19.7W LED

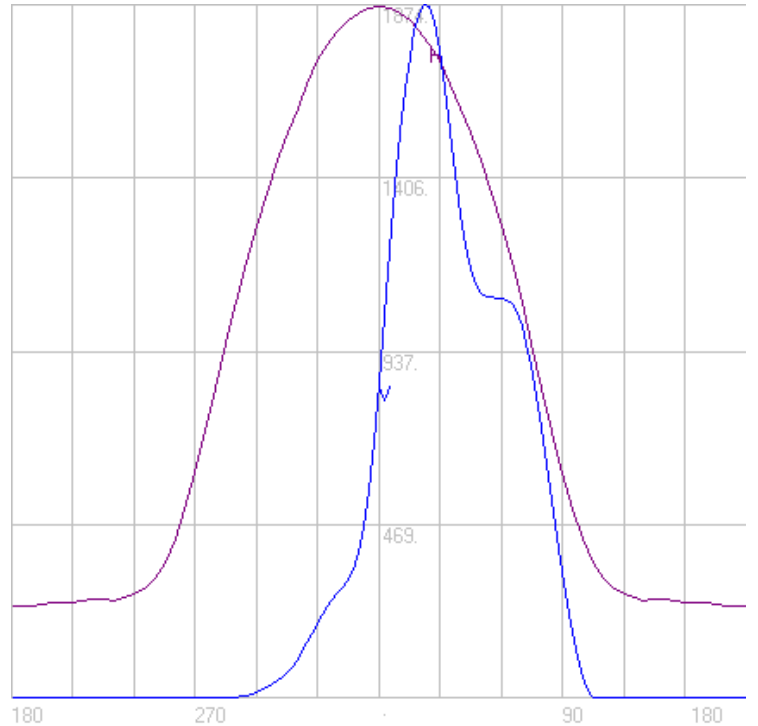
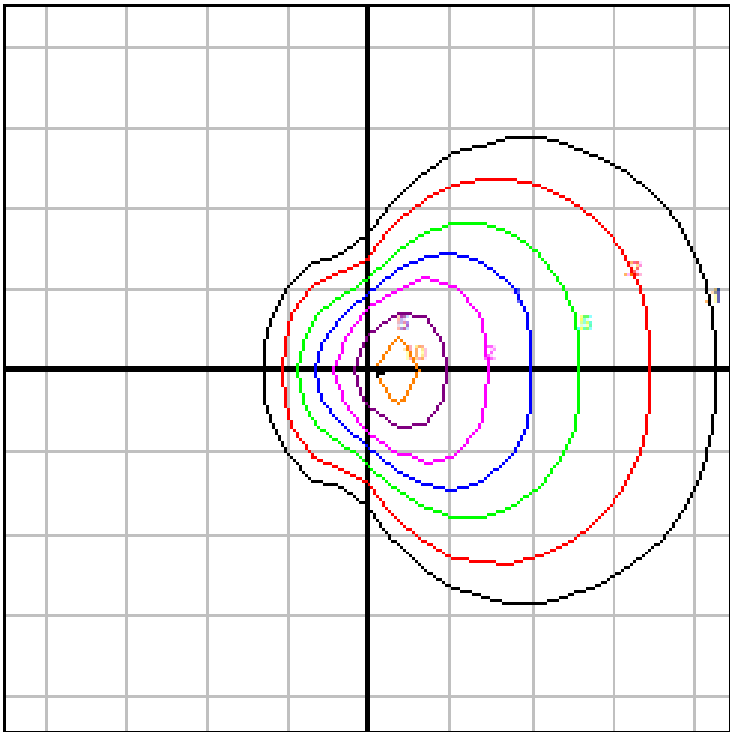


Characteristics

IES Classification	Type IV
Longitudinal Classification	Very Short
Lumens Per Lamp	N.A. (absolute)
Total Lamp Lumens	N.A. (absolute)
Luminaire Lumens	2921
Downward Total Efficiency	N.A.
Total Luminaire Efficiency	N.A.
Luminaire Efficacy Rating (LER)	133
Total Luminaire Watts	23
Ballast Factor	1.00
Upward Waste Light Ratio	0.02
Max. Cd.	1874.3 (0H, 22.5V)
Max. Cd. (<90 Vert.)	1874.3 (0H, 22.5V)
Max. Cd. (At 90 Deg. Vert.)	343.2 (11.7%Lum)
Max. Cd. (80 to <90 Deg. Vert.)	737.3 (25.2%Lum)
Cutoff Classification (deprecated)	N.A. (absolute)

Characteristics

NEMA Type	6 H x 4 V
Maximum Candela	1874.3
Maximum Candela Angle	0 H 22.5 V
Horizontal Beam Angle (50%)	73.9
Vertical Beam Angle (50%)	71.4
Horizontal Field Angle (10%)	123.0
Vertical Field Angle (10%)	62.5
Lumens Per La-mp	N.A. (absolute)
Total Lamp Lumens	N.A. (absolute)
Beam Lumens	1846
Beam Efficiency	N.A.
Field Lumens	2728
Field Efficiency	N.A.
Spill Lumens	137
Luminaire Lumens	2865
Total Efficiency	N.A.
Total Luminaire Watts	22
Ballast Factor	1.00



Mounting Height: 10 ft.

Grid Spacing: 10 ft.

In the interest of product improvement, BEGA reserves the right to make technical changes without notice.

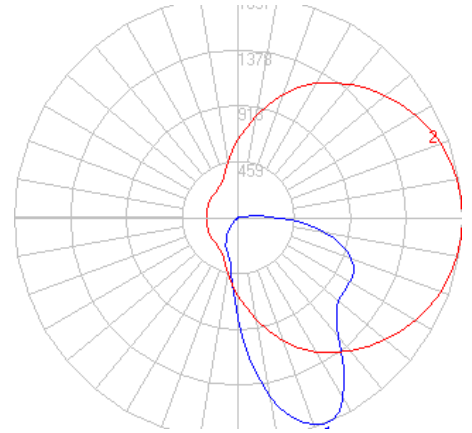
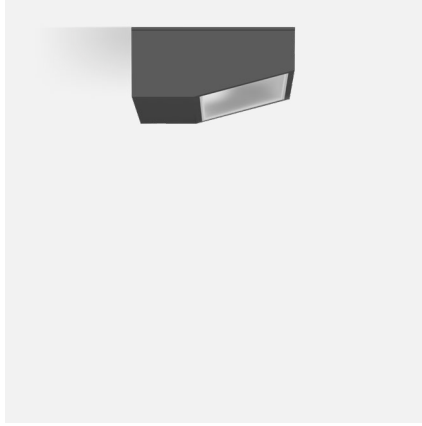
BEGA 1000 Bega Way, Carpinteria, CA 93013 (805)684-0533 Fax (805)566-9474 www.bega-us.com © Copyright BEGA-US 2020

09/22/2020

BEGA

File: 24089K35_BEGA_IES.ies

TEST: BE_24089K4
 TEST LAB: BEGA
 DATE: 05/25/2018
 LUMINAIRE: 24 089K35
 LAMP: 19.7W LED

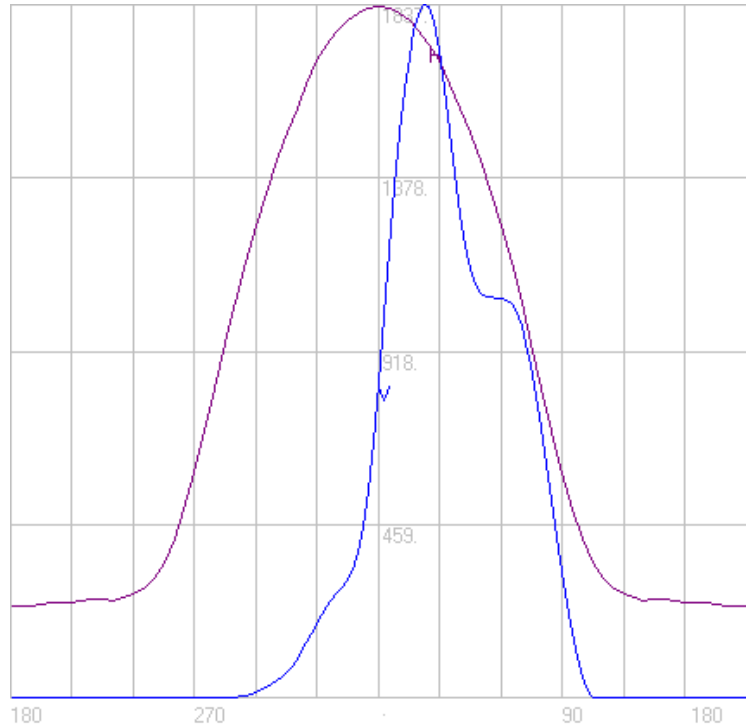
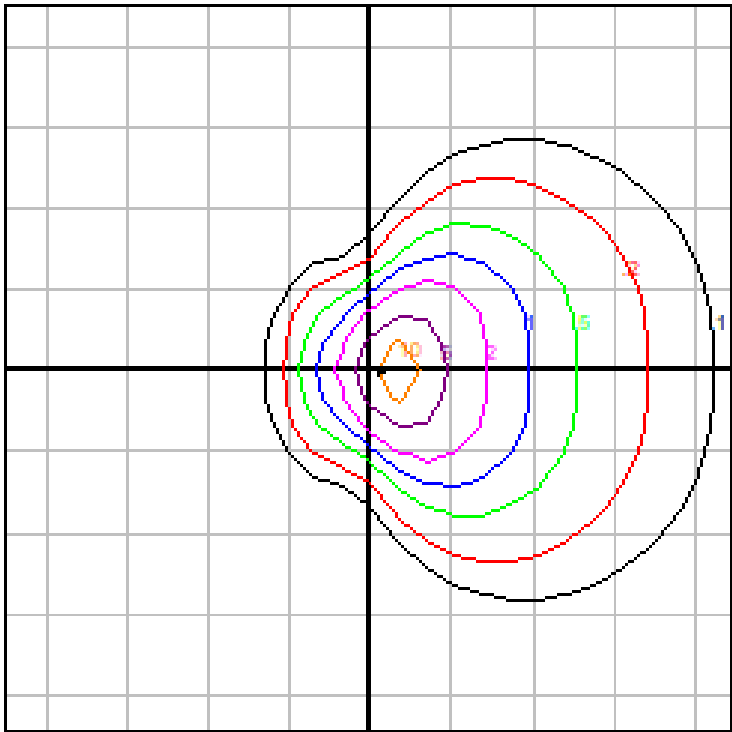


Characteristics

IES Classification	Type IV
Longitudinal Classification	Very Short
Lumens Per Lamp	N.A. (absolute)
Total Lamp Lumens	N.A. (absolute)
Luminaire Lumens	2863
Downward Total Efficiency	N.A.
Total Luminaire Efficiency	N.A.
Luminaire Efficacy Rating (LER)	130
Total Luminaire Watts	23
Ballast Factor	1.00
Upward Waste Light Ratio	0.02
Max. Cd.	1836.814 (0H, 22.5V)
Max. Cd. (<90 Vert.)	1836.814 (0H, 22.5V)
Max. Cd. (At 90 Deg. Vert.)	336.336 (11.7%Lum)
Max. Cd. (80 to <90 Deg. Vert.)	722.554 (25.2%Lum)
Cutoff Classification (deprecated)	N.A. (absolute)

Characteristics

NEMA Type	6 H x 4 V
Maximum Candela	1836.814
Maximum Candela Angle	0 H 22.5 V
Horizontal Beam Angle (50%)	73.9
Vertical Beam Angle (50%)	71.4
Horizontal Field Angle (10%)	123.0
Vertical Field Angle (10%)	62.5
Lumens Per Lamp	N.A. (absolute)
Total Lamp Lumens	N.A. (absolute)
Beam Lumens	1809
Beam Efficiency	N.A.
Field Lumens	2674
Field Efficiency	N.A.
Spill Lumens	134
Luminaire Lumens	2808
Total Efficiency	N.A.
Total Luminaire Watts	22
Ballast Factor	1.00



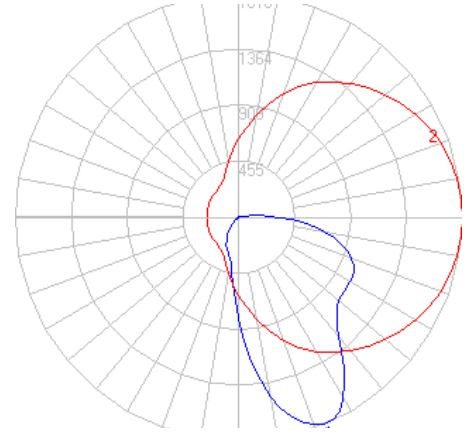
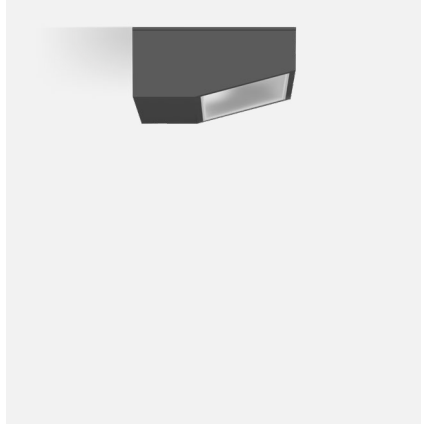
Mounting Height: 10 ft. Grid Spacing: 10 ft.

In the interest of product improvement, BEGA reserves the right to make technical changes without notice.

BEGA

File: 24089K3_BEGA_IES.ies

TEST: BE_24089K4
 TEST LAB: BEGA
 DATE: 05/25/2018
 LUMINAIRE: 24 089K3
 LAMP: 19.7W LED

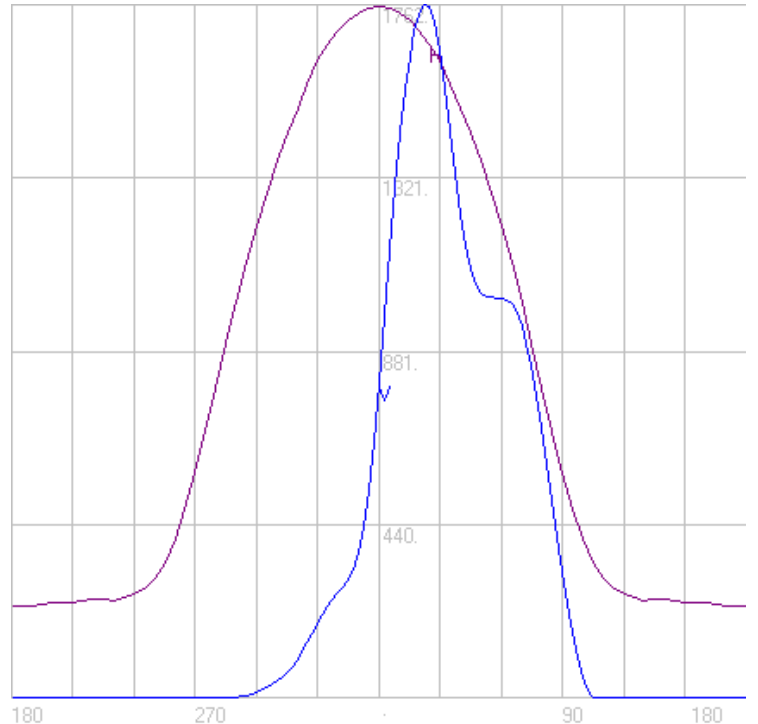
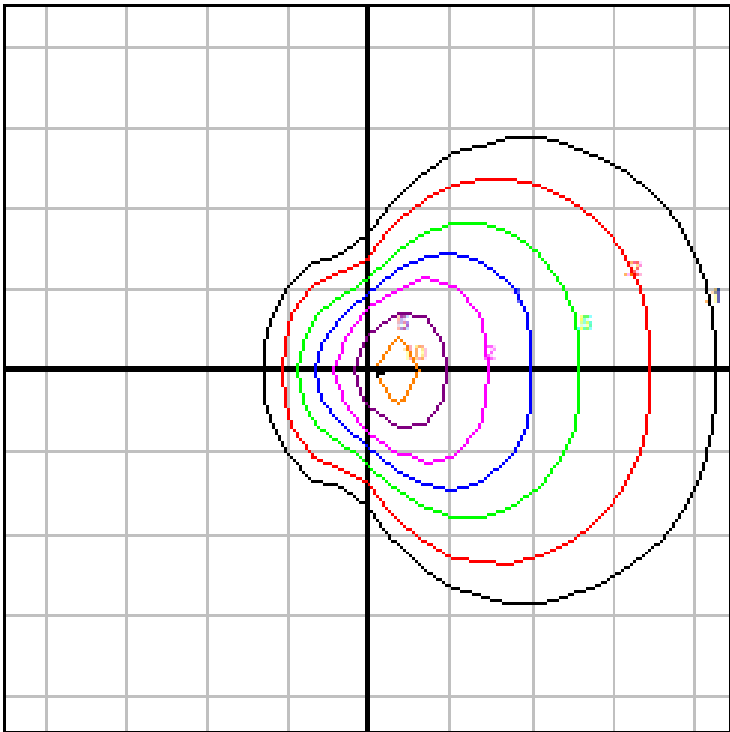


Characteristics

IES Classification	Type IV
Longitudinal Classification	Very Short
Lumens Per Lamp	N.A. (absolute)
Total Lamp Lumens	N.A. (absolute)
Luminaire Lumens	2833
Downward Total Efficiency	N.A.
Total Luminaire Efficiency	N.A.
Luminaire Efficacy Rating (LER)	129
Total Luminaire Watts	23
Ballast Factor	1.00
Upward Waste Light Ratio	0.02
Max. Cd.	1818.071 (0H, 22.5V)
Max. Cd. (<90 Vert.)	1818.071 (0H, 22.5V)
Max. Cd. (At 90 Deg. Vert.)	332.904 (11.8%Lum)
Max. Cd. (80 to <90 Deg. Vert.)	715.181 (25.2%Lum)
Cutoff Classification (deprecated)	N.A. (absolute)

Characteristics

NEMA Type	6 H x 4 V
Maximum Candela	1818.071
Maximum Candela Angle	0 H 22.5 V
Horizontal Beam Angle (50%)	73.9
Vertical Beam Angle (50%)	71.4
Horizontal Field Angle (10%)	123.0
Vertical Field Angle (10%)	62.5
Lumens Per Lamp	N.A. (absolute)
Total Lamp Lumens	N.A. (absolute)
Beam Lumens	1791
Beam Efficiency	N.A.
Field Lumens	2647
Field Efficiency	N.A.
Spill Lumens	133
Luminaire Lumens	2779
Total Efficiency	N.A.
Total Luminaire Watts	22
Ballast Factor	1.00



Mounting Height: 10 ft.

Grid Spacing: 10 ft.

In the interest of product improvement, BEGA reserves the right to make technical changes without notice.

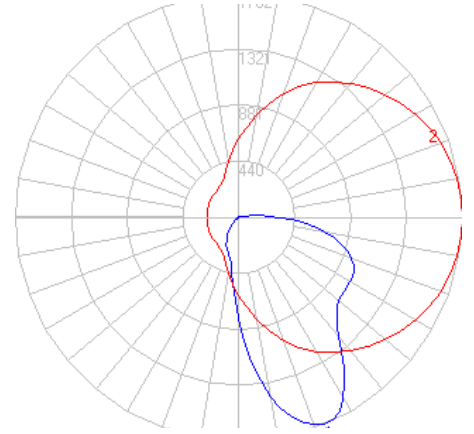
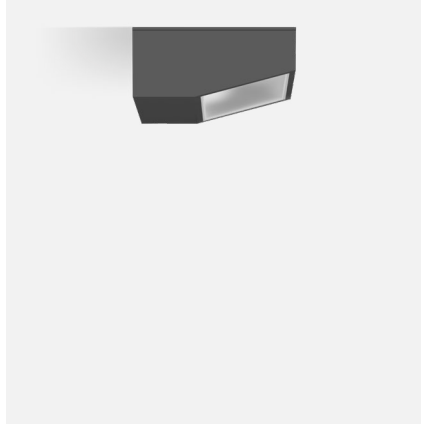
BEGA 1000 Bega Way, Carpinteria, CA 93013 (805)684-0533 Fax (805)566-9474 www.bega-us.com © Copyright BEGA-US 2020

09/22/2020

BEGA

File: 24089K27_BEGA_IES.ies

TEST: BE_24089K4
 TEST LAB: BEGA
 DATE: 05/25/2018
 LUMINAIRE: 24 089K27
 LAMP: 19.7W LED

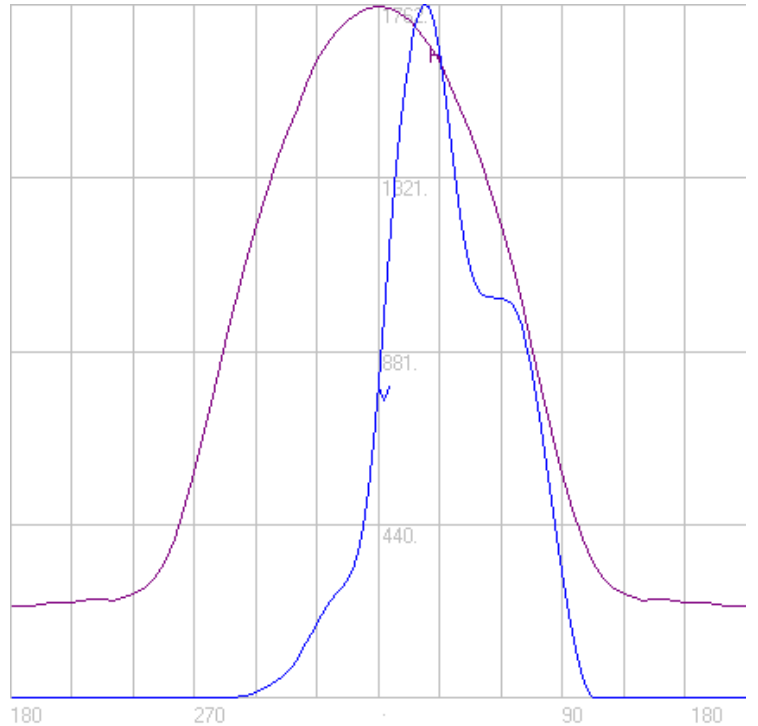
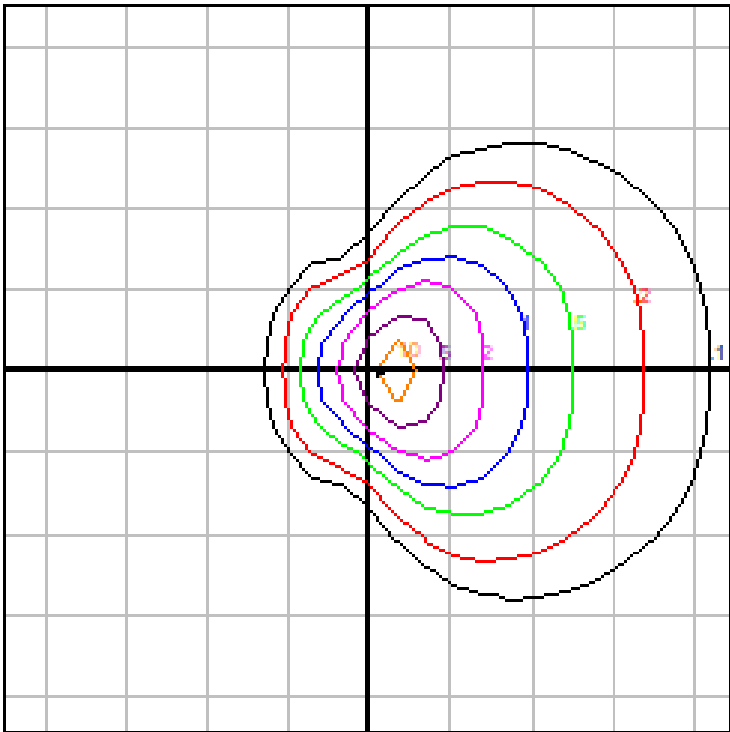


Characteristics

IES Classification	Type IV
Longitudinal Classification	Very Short
Lumens Per Lamp	N.A. (absolute)
Total Lamp Lumens	N.A. (absolute)
Luminaire Lumens	2746
Downward Total Efficiency	N.A.
Total Luminaire Efficiency	N.A.
Luminaire Efficacy Rating (LER)	125
Total Luminaire Watts	23
Ballast Factor	1.00
Upward Waste Light Ratio	0.02
Max. Cd.	1761.842 (0H, 22.5V)
Max. Cd. (<90 Vert.)	1761.842 (0H, 22.5V)
Max. Cd. (At 90 Deg. Vert.)	322.608 (11.7%Lum)
Max. Cd. (80 to <90 Deg. Vert.)	693.062 (25.2%Lum)
Cutoff Classification (deprecated)	N.A. (absolute)

Characteristics

NEMA Type	6 H x 4 V
Maximum Candela	1761.842
Maximum Candela Angle	0 H 22.5 V
Horizontal Beam Angle (50%)	73.9
Vertical Beam Angle (50%)	71.4
Horizontal Field Angle (10%)	123.0
Vertical Field Angle (10%)	62.5
Lumens Per Lamp	N.A. (absolute)
Total Lamp Lumens	N.A. (absolute)
Beam Lumens	1736
Beam Efficiency	N.A.
Field Lumens	2565
Field Efficiency	N.A.
Spill Lumens	129
Luminaire Lumens	2693
Total Efficiency	N.A.
Total Luminaire Watts	22
Ballast Factor	1.00



Mounting Height: 10 ft.

Grid Spacing: 10 ft.

In the interest of product improvement, BEGA reserves the right to make technical changes without notice.

BEGA 1000 Bega Way, Carpinteria, CA 93013 (805)684-0533 Fax (805)566-9474 www.bega-us.com © Copyright BEGA-US 2020

09/22/2020