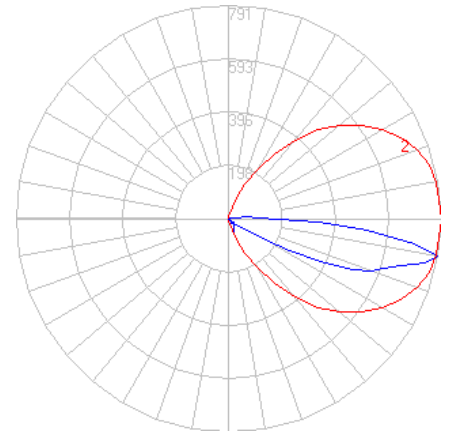


BEGA

Photometric Filename: 24064K4.ies

TEST: BE_24064K4
 TEST LAB: BEGA
 DATE: 7/11/2017
 LUMINAIRE: 24 064K4
 LAMP: 7.2W LED



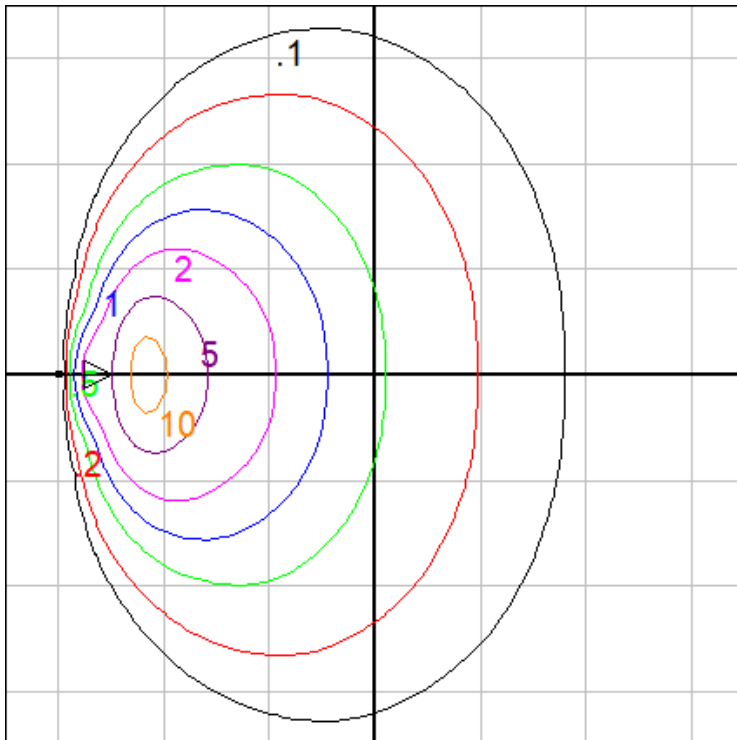
Characteristics

IES Classification	Type IV
Longitudinal Classification	Very Short
Lumens Per Lamp	N.A. (absolute)
Total Lamp Lumens	N.A. (absolute)
Luminaire Lumens	493
Downward Total Efficiency	N.A.
Total Luminaire Efficiency	N.A.
Luminaire Efficacy Rating (LER)	56
Total Luminaire Watts	8.8
Ballast Factor	1.00
Upward Waste Light Ratio	0.08
Max. Cd.	791.3 (0H, 80V)
Max. Cd. (<90 Vert.)	791.3 (0H, 80V)
Max. Cd. (At 90 Deg. Vert.)	204.4 (41.5%Lum)
Max. Cd. (80 to <90 Deg. Vert.)	791.3 (160.5%Lum)
Cutoff Classification (deprecated)	N.A. (absolute)

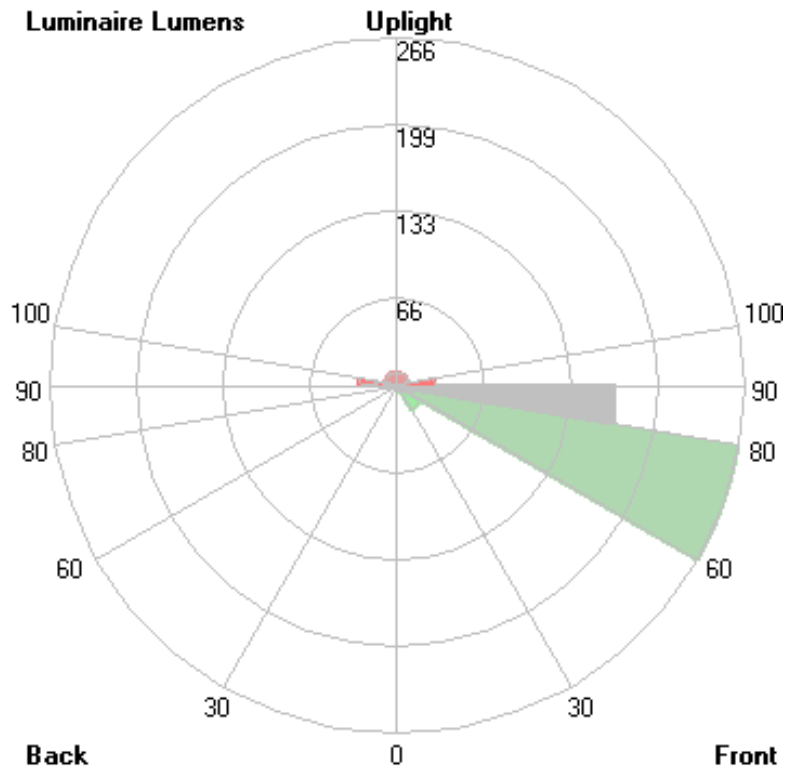
Lum. Classification System (LCS)

LCS Zone	Lumens	%Lamp	%Lum
FL (0-30)	0.5	N.A.	0.1
FM (30-60)	21.5	N.A.	4.4
FH (60-80)	265.6	N.A.	53.9
FVH(80-90)	167.0	N.A.	33.9
BL (0-30)	0.0	N.A.	0.0
BM (30-60)	0.0	N.A.	0.0
BH (60-80)	< 0.05	N.A.	0.0
BVH(80-90)	< 0.05	N.A.	0.0
UL (90-100)	28.6	N.A.	5.8
UH (100-180)	9.6	N.A.	1.9
Total	492.8	N.A.	100.0

BUG Rating B0-U2-G2



Mounting Height = 1.5 ft. Grid Spacing = 4 ft.

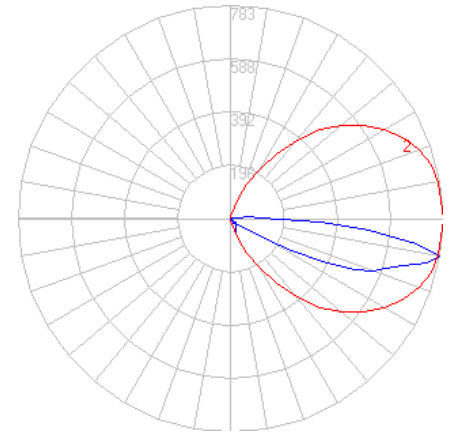


In the interest of product improvement, BEGA reserves the right to make technical changes without notice.

BEGA

Photometric Filename: 24064K35.ies

TEST: BE_24064K4
 TEST LAB: BEGA
 DATE: 7/11/2017
 LUMINAIRE: 24 064K35
 LAMP: 7.2W LED



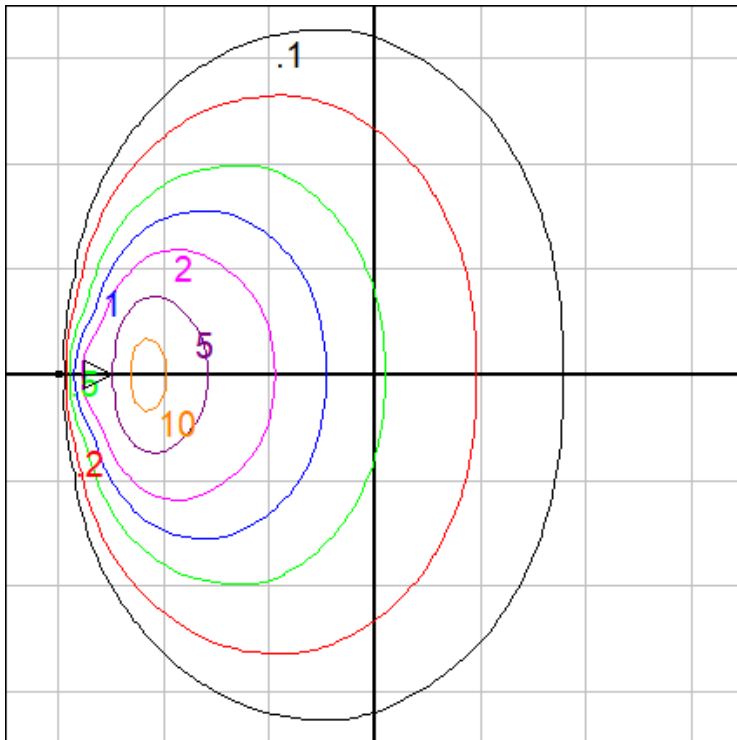
Characteristics

IES Classification	Type IV
Longitudinal Classification	Very Short
Lumens Per Lamp	N.A. (absolute)
Total Lamp Lumens	N.A. (absolute)
Luminaire Lumens	488
Downward Total Efficiency	N.A.
Total Luminaire Efficiency	N.A.
Luminaire Efficacy Rating (LER)	55
Total Luminaire Watts	8.8
Ballast Factor	1.00
Upward Waste Light Ratio	0.08
Max. Cd.	783.387 (0H, 80V)
Max. Cd. (<90 Vert.)	783.387 (0H, 80V)
Max. Cd. (At 90 Deg. Vert.)	202.356 (41.5%Lum)
Max. Cd. (80 to <90 Deg. Vert.)	783.387 (160.5%Lum)
Cutoff Classification (deprecated)	N.A. (absolute)

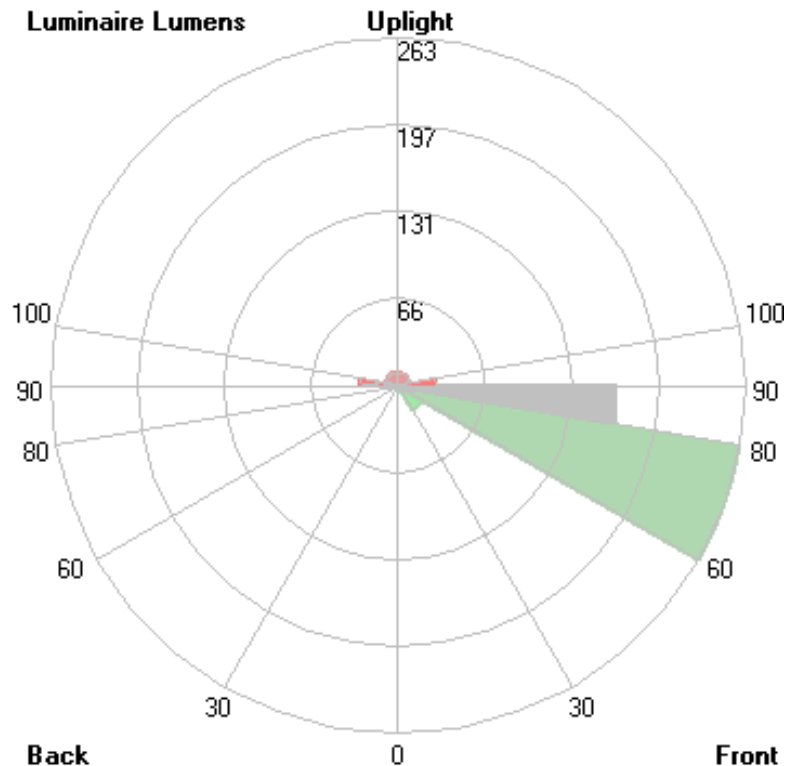
Lum. Classification System (LCS)

LCS Zone	Lumens	%Lamp	%Lum
FL (0-30)	0.5	N.A.	0.1
FM (30-60)	21.3	N.A.	4.4
FH (60-80)	262.9	N.A.	53.9
FVH(80-90)	165.4	N.A.	33.9
BL (0-30)	0.0	N.A.	0.0
BM (30-60)	0.0	N.A.	0.0
BH (60-80)	< 0.05	N.A.	0.0
BVH(80-90)	< 0.05	N.A.	0.0
UL (90-100)	28.3	N.A.	5.8
UH (100-180)	9.5	N.A.	1.9
Total	487.9	N.A.	100.0

BUG Rating B0-U2-G2



Mounting Height = 1.5 ft. Grid Spacing = 4 ft.

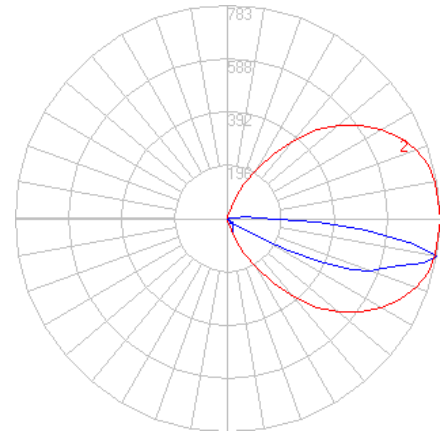


In the interest of product improvement, BEGA reserves the right to make technical changes without notice.

BEGA

Photometric Filename: 24064K3.ies

TEST: BE_24064K4
 TEST LAB: BEGA
 DATE: 7/11/2017
 LUMINAIRE: 24 064K3
 LAMP: 7.2W LED



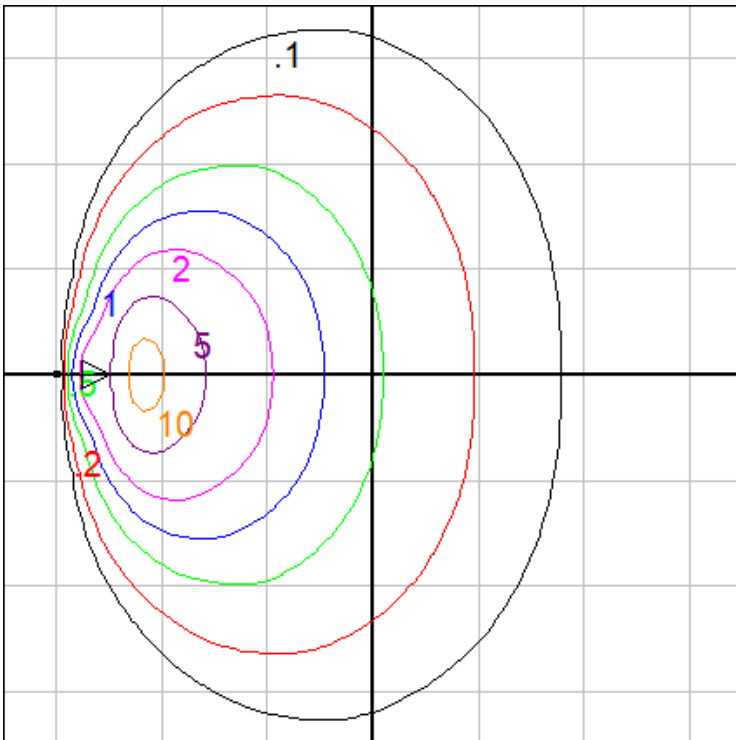
Characteristics

IES Classification	Type IV
Longitudinal Classification	Very Short
Lumens Per Lamp	N.A. (absolute)
Total Lamp Lumens	N.A. (absolute)
Luminaire Lumens	488
Downward Total Efficiency	N.A.
Total Luminaire Efficiency	N.A.
Luminaire Efficacy Rating (LER)	55
Total Luminaire Watts	8.8
Ballast Factor	1.00
Upward Waste Light Ratio	0.08
Max. Cd.	783.387 (0H, 80V)
Max. Cd. (<90 Vert.)	783.387 (0H, 80V)
Max. Cd. (At 90 Deg. Vert.)	202.356 (41.5%Lum)
Max. Cd. (80 to <90 Deg. Vert.)	783.387 (160.5%Lum)
Cutoff Classification (deprecated)	N.A. (absolute)

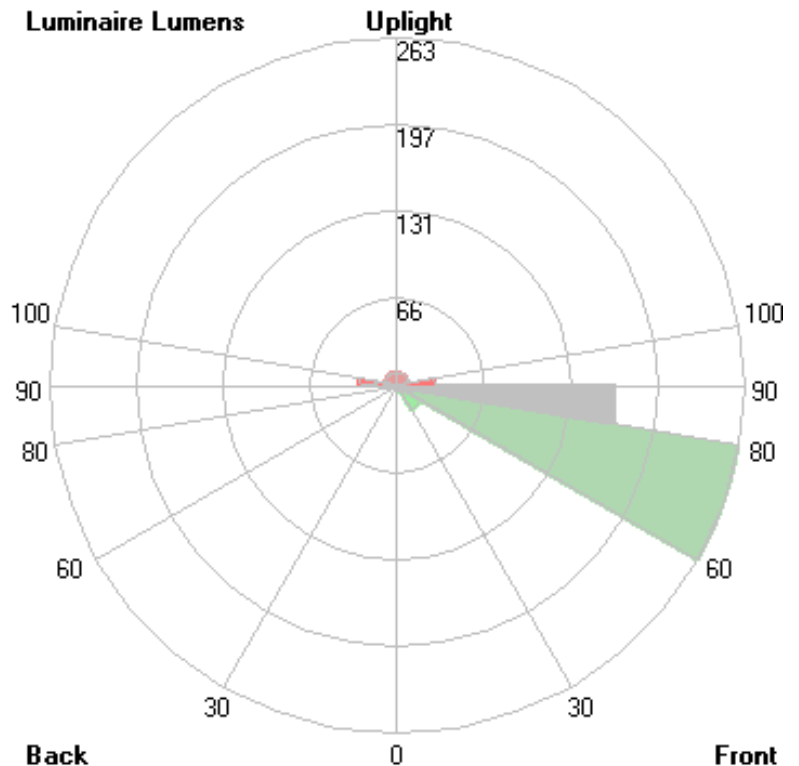
Lum. Classification System (LCS)

LCS Zone	Lumens	%Lamp	%Lum
FL (0-30)	0.5	N.A.	0.1
FM (30-60)	21.3	N.A.	4.4
FH (60-80)	262.9	N.A.	53.9
FVH(80-90)	165.4	N.A.	33.9
BL (0-30)	0.0	N.A.	0.0
BM (30-60)	0.0	N.A.	0.0
BH (60-80)	< 0.05	N.A.	0.0
BVH(80-90)	< 0.05	N.A.	0.0
UL (90-100)	28.3	N.A.	5.8
UH (100-180)	9.5	N.A.	1.9
Total	487.9	N.A.	100.0

BUG Rating B0-U2-G2



Mounting Height = 1.5 ft. Grid Spacing = 4 ft.

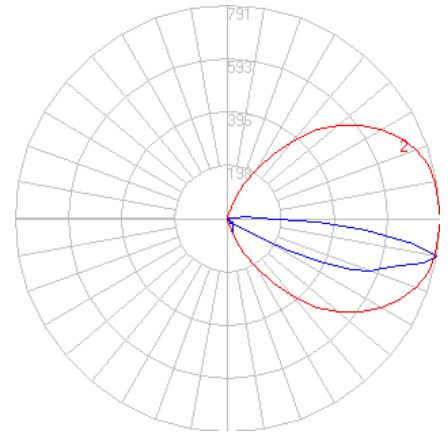


In the interest of product improvement, BEGA reserves the right to make technical changes without notice.

BEGA

Photometric Filename: 24064K27.ies

TEST: BE_24064K4
 TEST LAB: BEGA
 DATE: 7/11/2017
 LUMINAIRE: 24 064K27
 LAMP: 7.2W LED



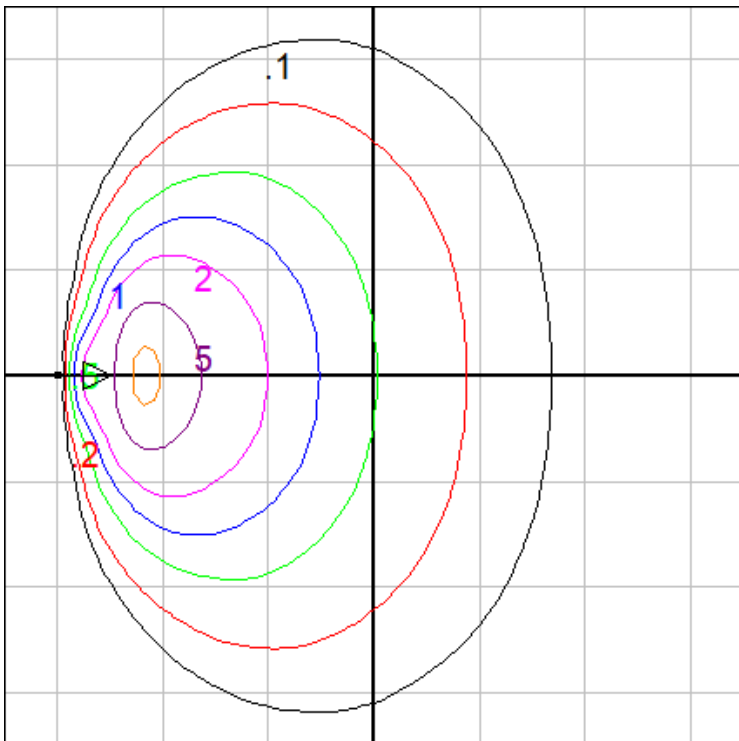
Characteristics

IES Classification	Type IV
Longitudinal Classification	Very Short
Lumens Per Lamp	N.A. (absolute)
Total Lamp Lumens	N.A. (absolute)
Luminaire Lumens	448
Downward Total Efficiency	N.A.
Total Luminaire Efficiency	N.A.
Luminaire Efficacy Rating (LER)	51
Total Luminaire Watts	8.8
Ballast Factor	1.00
Upward Waste Light Ratio	0.08
Max. Cd.	720.083 (0H, 80V)
Max. Cd. (<90 Vert.)	720.083 (0H, 80V)
Max. Cd. (At 90 Deg. Vert.)	186.004 (41.5%Lum)
Max. Cd. (80 to <90 Deg. Vert.)	720.083 (160.7%Lum)
Cutoff Classification (deprecated)	N.A. (absolute)

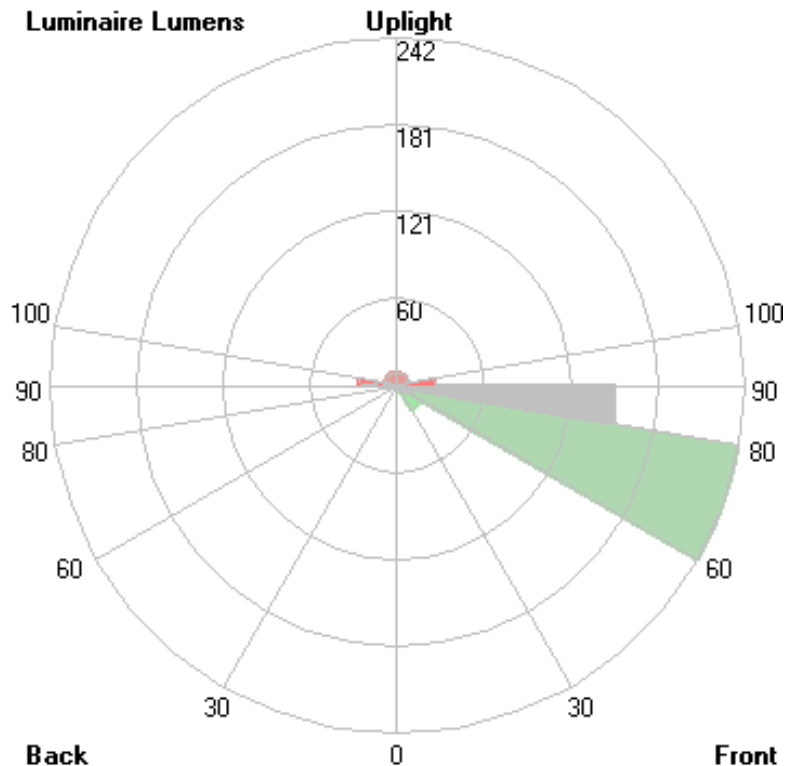
Lum. Classification System (LCS)

LCS Zone	Lumens	%Lamp	%Lum
FL (0-30)	0.5	N.A.	0.1
FM (30-60)	19.5	N.A.	4.4
FH (60-80)	241.7	N.A.	53.9
FVH(80-90)	152.0	N.A.	33.9
BL (0-30)	0.0	N.A.	0.0
BM (30-60)	0.0	N.A.	0.0
BH (60-80)	< 0.05	N.A.	0.0
BVH(80-90)	< 0.05	N.A.	0.0
UL (90-100)	26.0	N.A.	5.8
UH (100-180)	8.7	N.A.	1.9
Total	448.4	N.A.	100.0

BUG Rating B0-U2-G2



Mounting Height = 1.5 ft. Grid Spacing = 4 ft.



In the interest of product improvement, BEGA reserves the right to make technical changes without notice.