

Application

Wall luminaires for a host of applications – arranged individually or in groups. The luminaires can be installed in a horizontal or vertical position.

Materials

Hand-blown three-ply opal glass
Aluminum housing

NRTL listed to North American Standards, for interior use only

Weight: 4.9 lbs.

Electrical

Operating voltage	120-277VAC
Minimum start temperature	-30° C
LED module wattage	13.6W
System wattage	20.0W
Controllability	0-10V dimmable
Color rendering index	Ra > 90
Luminaire lumens	1210lm
LED service life (L70)	60000hrs

LED color temperature

4000K (K4)
3500K (K35)
3000K (K3)
2700K (K27)

BEGA can supply you with suitable LED replacement modules for up to 20 years after the purchase of LED luminaires - see website for details

Finish

Select the desired material finish by using appropriate code number as suffix.

Available colors

White (.1)	Stainless steel (.2)
Chrome (.3)	

Type:

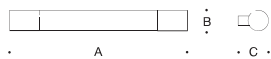
BEGA Product:

Project:

Modified:

Included (available for pre-shipment)

B19537 Narrow opening wiring box



Linear wall luminaire · Opal glass

	LED	A	B	C
B23256	13.6W	27 ¹ / ₂	2 ³ / ₄	4 ¹ / ₈

