

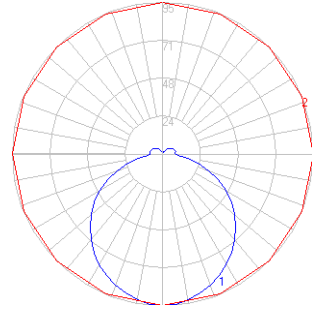
BEGA

Photometric Filename: 22751.IES

TEST: L11121402
 TEST LAB: LIGHT LABORATORY, INC.
 DATE: 11/14/2012
 LUMINAIRE: 22 751
 LAMP: 8.4W LED



All results in accordance with IESNA LM-79-08



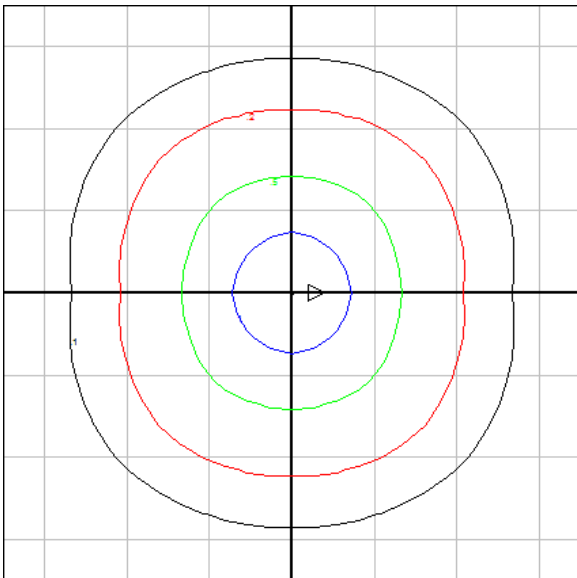
Characteristics

IES Classification	Type VS
Longitudinal Classification	Very Short
Lumens Per Lamp	N.A. (absolute)
Total Lamp Lumens	N.A. (absolute)
Luminaire Lumens	405
Downward Total Efficiency	N.A.
Total Luminaire Efficiency	N.A.
Luminaire Efficacy Rating (LER)	37
Total Luminaire Watts	10.8
Ballast Factor	1.00
Upward Waste Light Ratio	0.17
Max. Cd.	95.05 (0H, 0V)
Max. Cd. (<90 Vert.)	95.05 (0H, 0V)
Max. Cd. (At 90 Deg. Vert.)	20.7 (5.1%Lum)
Max. Cd. (80 to <90 Deg. Vert.)	26.27 (6.5%Lum)
Cutoff Classification (deprecated)	N.A. (absolute)
R9 Value	28.94

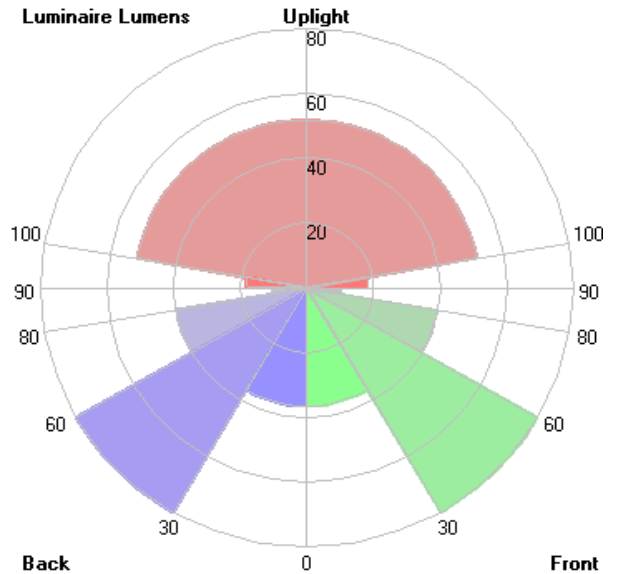
Lum. Classification System (LCS)

LCS Zone	Lumens	%Lamp	%Lum
FL (0-30)	36.7	N.A.	9.1
FM (30-60)	80.3	N.A.	19.8
FH (60-80)	39.9	N.A.	9.9
FVH(80-90)	10.4	N.A.	2.6
BL (0-30)	36.7	N.A.	9.1
BM (30-60)	80.3	N.A.	19.8
BH (60-80)	39.9	N.A.	9.9
BVH(80-90)	10.4	N.A.	2.6
UL (90-100)	18.2	N.A.	4.5
UH (100-180)	52.0	N.A.	12.8
Total	404.8	N.A.	100.0

BUG Rating B0-U3-G1



Mounting Height = 8 ft. Grid Spacing = 5 ft.



In the interest of product improvement, BEGA reserves the right to make technical changes without notice.