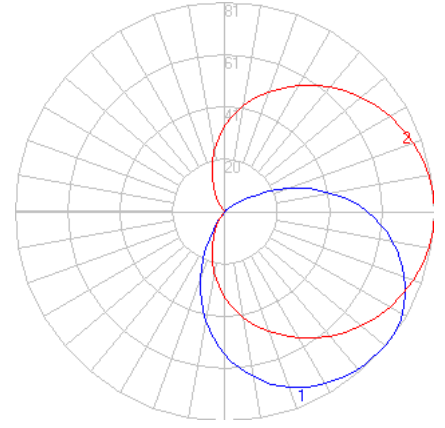


BEGA

Photometric Filename: 22649.IES

TEST: BE_22649
 TEST LAB: BEGA
 DATE: 5/23/2017
 LUMINAIRE: 22 649
 LAMP: 3.9W LED



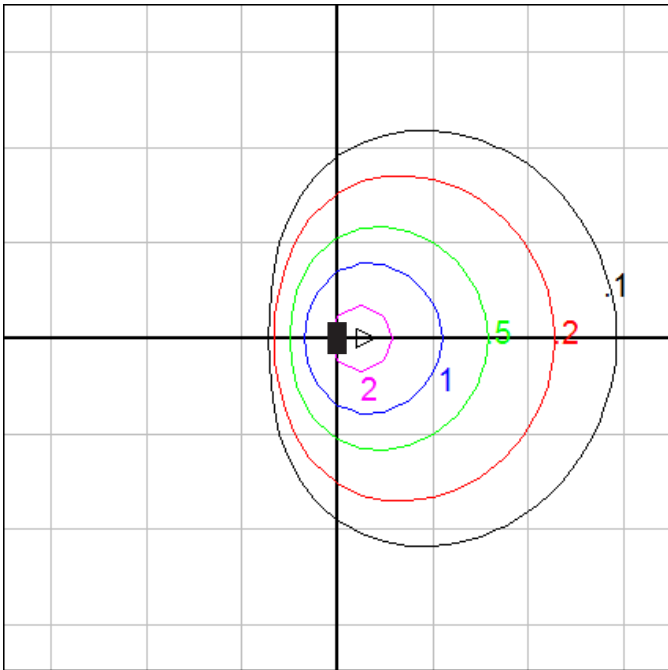
Characteristics

IES Classification	Type IV
Longitudinal Classification	Very Short
Lumens Per Lamp	N.A. (absolute)
Total Lamp Lumens	N.A. (absolute)
Luminaire Lumens	244
Downward Total Efficiency	N.A.
Total Luminaire Efficiency	N.A.
Luminaire Efficacy Rating (LER)	41
Total Luminaire Watts	6
Ballast Factor	1.00
Upward Waste Light Ratio	0.14
Max. Cd.	81.2 (0H, 52.5V)
Max. Cd. (<90 Vert.)	81.2 (0H, 52.5V)
Max. Cd. (At 90 Deg. Vert.)	55.3 (22.7%Lum)
Max. Cd. (80 to <90 Deg. Vert.)	66 (27.0%Lum)
Cutoff Classification (deprecated)	N.A. (absolute)

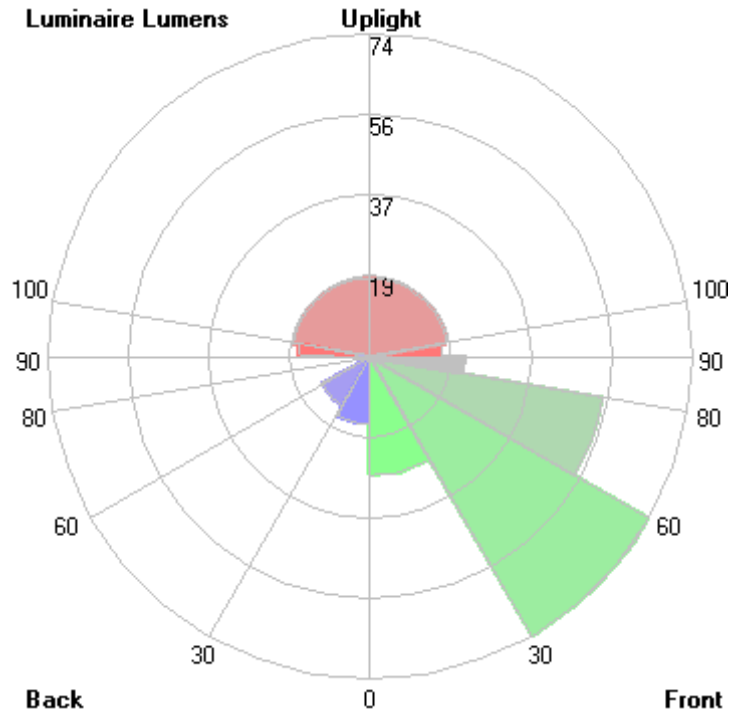
Lum. Classification System (LCS)

<u>LCS Zone</u>	<u>Lumens</u>	<u>%Lamp</u>	<u>%Lum</u>
FL (0-30)	27.3	N.A.	11.2
FM (30-60)	74.2	N.A.	30.4
FH (60-80)	54.5	N.A.	22.3
FVH (80-90)	21.9	N.A.	9.0
BL (0-30)	15.5	N.A.	6.3
BM (30-60)	12.9	N.A.	5.3
BH (60-80)	2.6	N.A.	1.1
BVH (80-90)	0.7	N.A.	0.3
UL (90-100)	16.6	N.A.	6.8
UH (100-180)	17.9	N.A.	7.3
Total	244.1	N.A.	100.0

BUG Rating B0-U2-G1



Wall Mount - Isofootcandle grid on floor
 Mounting Height = 5 ft. Grid Spacing = 5 ft.



In the interest of product improvement, BEGA reserves the right to make technical changes without notice.