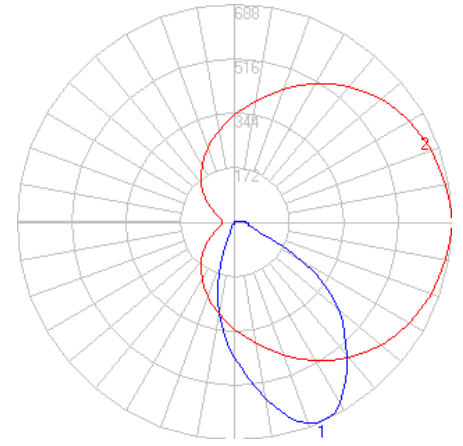


# BEGA



Photometric Filename: 22385.IES

TEST: BE\_22385  
 TEST LAB: BEGA  
 DATE: 6/11/2016  
 LUMINAIRE: 22 385  
 LAMP: 12.3W LED

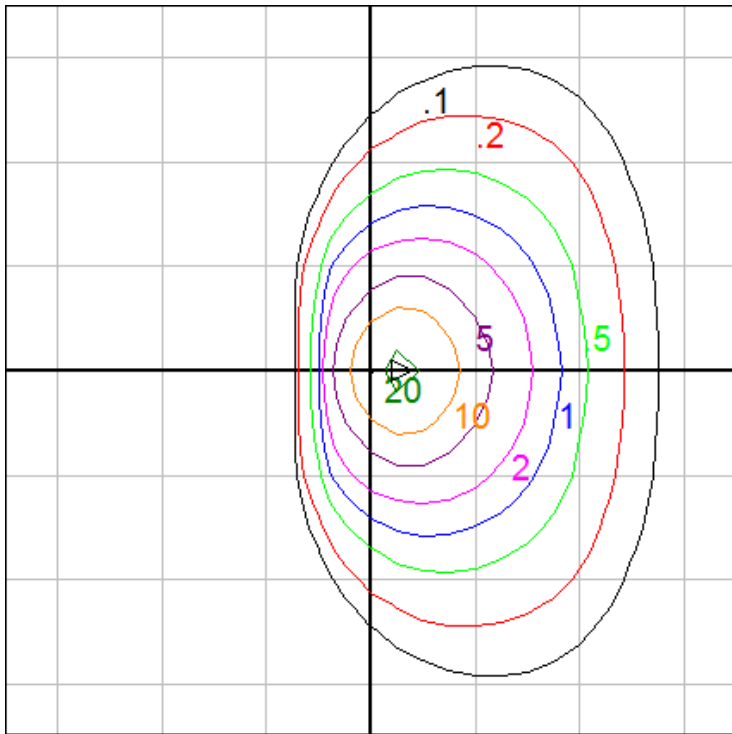
### Characteristics

IES Classification	Type II
Longitudinal Classification	Very Short
Lumens Per Lamp	N.A. (absolute)
Total Lamp Lumens	N.A. (absolute)
Luminaire Lumens	939
Downward Total Efficiency	N.A.
Total Luminaire Efficiency	N.A.
Luminaire Efficacy Rating (LER)	59
Total Luminaire Watts	16
Ballast Factor	1.00
Upward Waste Light Ratio	0.01
Max. Cd.	688.2 (0H, 25V)
Max. Cd. (<90 Vert.)	688.2 (0H, 25V)
Max. Cd. (At 90 Deg. Vert.)	35.5 (3.8%Lum)
Max. Cd. (80 to <90 Deg. Vert.)	48 (5.1%Lum)
Cutoff Classification (deprecated)	N.A. (absolute)

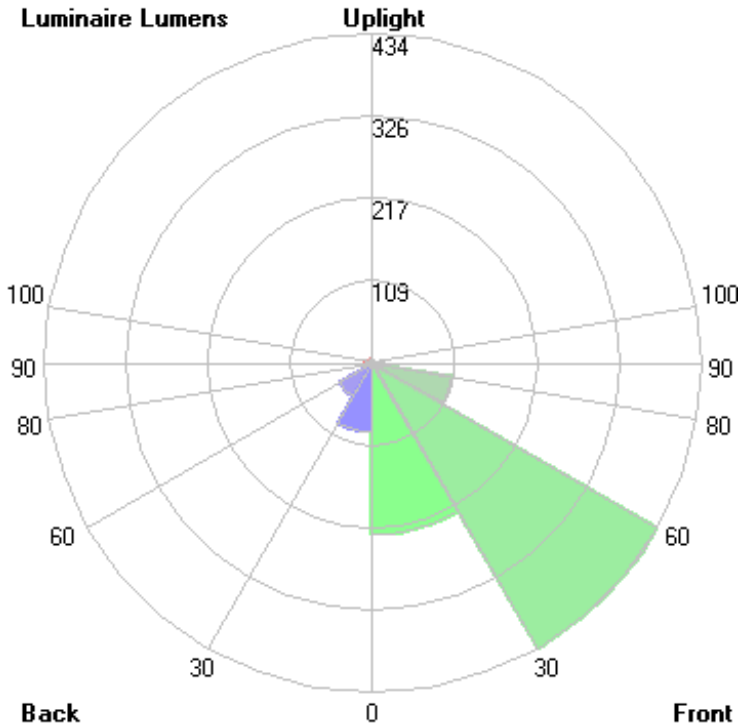
### Lum. Classification System (LCS)

<u>LCS Zone</u>	<u>Lumens</u>	<u>%Lamp</u>	<u>%Lum</u>
FL (0-30)	226.3	N.A.	24.1
FM (30-60)	434.1	N.A.	46.2
FH (60-80)	106.8	N.A.	11.4
FVH (80-90)	15.2	N.A.	1.6
BL (0-30)	91.7	N.A.	9.8
BM (30-60)	49.9	N.A.	5.3
BH (60-80)	3.5	N.A.	0.4
BVH (80-90)	< 0.05	N.A.	0.0
UL (90-100)	8.2	N.A.	0.9
UH (100-180)	3.8	N.A.	0.4
<b>Total</b>	<b>939.5</b>	<b>N.A.</b>	<b>100.0</b>

**BUG Rating B0-U1-G1**



Mounting Height = 5 ft. Grid Spacing = 5 ft.



In the interest of product improvement, BEGA reserves the right to make technical changes without notice.