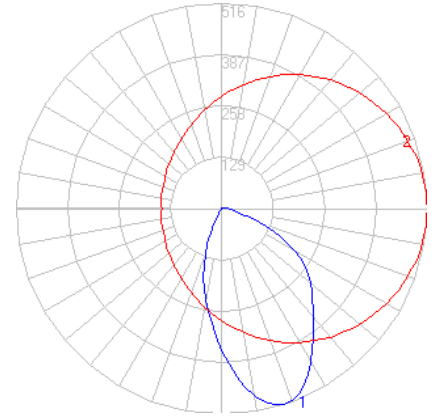


BEGA

Photometric Filename: 22292.IES

TEST: NA
 TEST LAB: BEGA
 DATE: 12/9/2016
 LUMINAIRE: 22 292
 LAMP: 7.9W LED



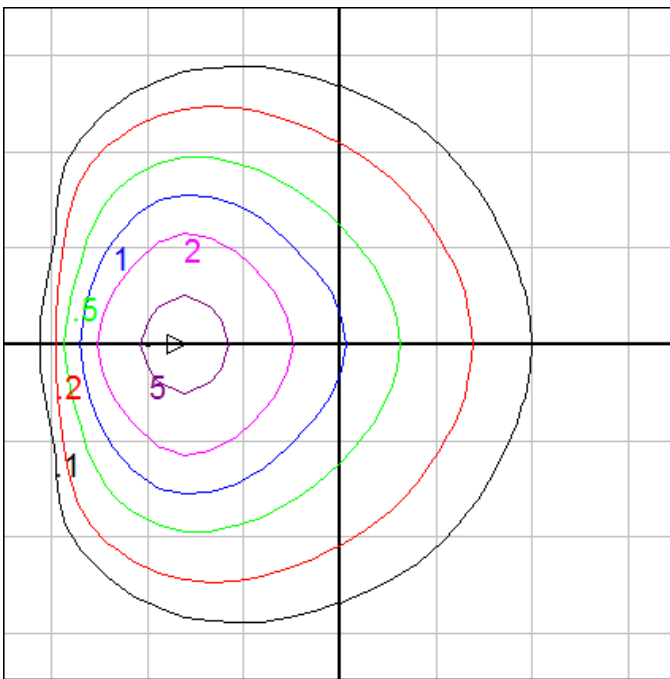
Characteristics

IES Classification	Type II
Longitudinal Classification	Very Short
Lumens Per Lamp	N.A. (absolute)
Total Lamp Lumens	N.A. (absolute)
Luminaire Lumens	618
Downward Total Efficiency	N.A.
Total Luminaire Efficiency	N.A.
Luminaire Efficacy Rating (LER)	78
Total Luminaire Watts	7.9
Ballast Factor	1.00
Upward Waste Light Ratio	0.01
Max. Cd.	515.621 (360H, 17.5V)
Max. Cd. (<90 Vert.)	515.621 (360H, 17.5V)
Max. Cd. (At 90 Deg. Vert.)	17.017 (2.8%Lum)
Max. Cd. (80 to <90 Deg. Vert.)	28.456 (4.6%Lum)
Cutoff Classification (deprecated)	N.A. (absolute)

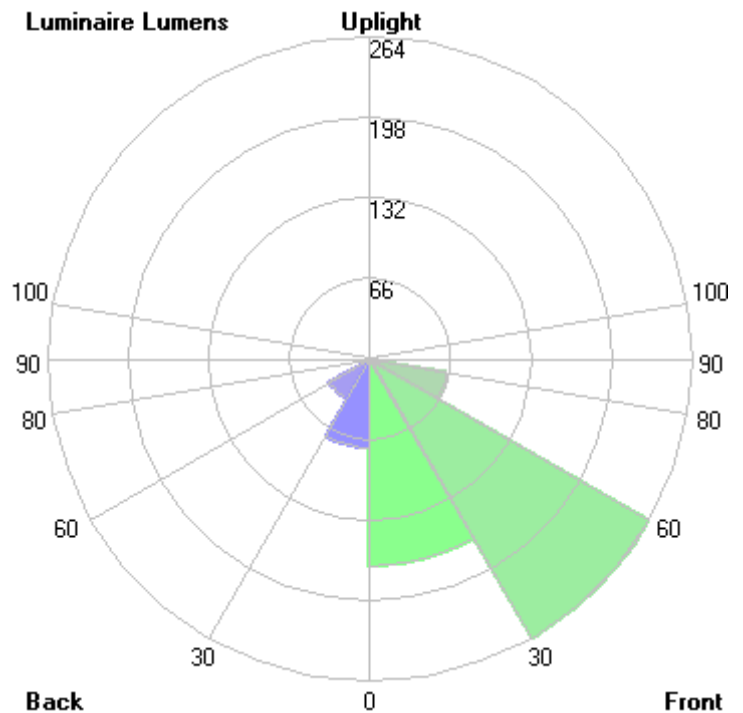
Lum. Classification System (LCS)

LCS Zone	Lumens	%Lamp	%Lum
FL (0-30)	169.4	N.A.	27.4
FM (30-60)	263.8	N.A.	42.7
FH (60-80)	63.5	N.A.	10.3
FVH(80-90)	5.5	N.A.	0.9
BL (0-30)	72.6	N.A.	11.8
BM (30-60)	38.1	N.A.	6.2
BH (60-80)	1.2	N.A.	0.2
BVH(80-90)	< 0.05	N.A.	0.0
UL (90-100)	2.5	N.A.	0.4
UH (100-180)	0.9	N.A.	0.2
Total	617.5	N.A.	100.0

BUG Rating B0-U1-G0



Mounting Height = 8 ft. Grid Spacing = 5 ft.



In the interest of product improvement, BEGA reserves the right to make technical changes without notice.