

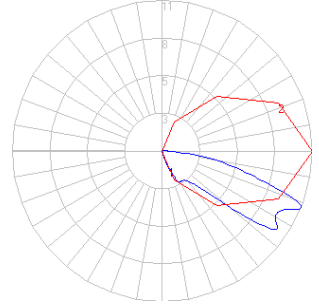
BEGA

Photometric Filename: 22135.ies

TEST: 18946
 TEST LAB: LUMINAIRE TESTING LABORATORY, INC.
 DATE: 4/21/2010
 LUMINAIRE: 22 135
 LAMP: 3.4W LED



All results in accordance with IESNA LM-79-08



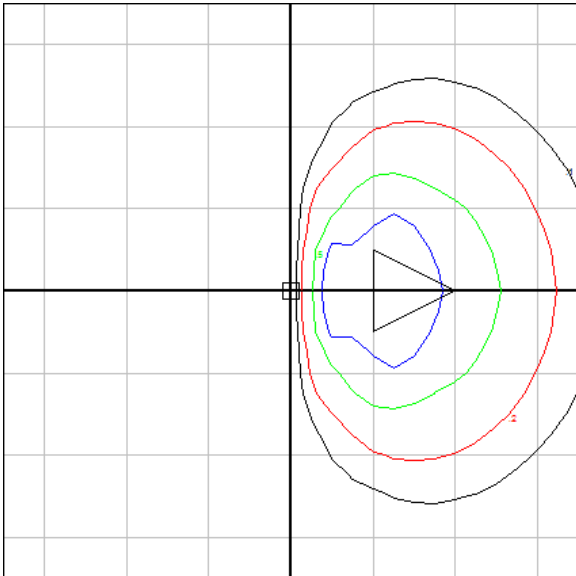
Characteristics

IES Classification	Type IV
Longitudinal Classification	Very Short
Lumens Per Lamp	N.A. (absolute)
Total Lamp Lumens	N.A. (absolute)
Luminaire Lumens	9
Downward Total Efficiency	N.A.
Total Luminaire Efficiency	N.A.
Luminaire Efficacy Rating (LER)	2
Total Luminaire Watts	4.9
Ballast Factor	1.00
Upward Waste Light Ratio	0.00
Max. Cd.	10.55 (0H, 68V)
Max. Cd. (<90 Vert.)	10.55 (0H, 68V)
Max. Cd. (At 90 Deg. Vert.)	0 (0.0%Lum)
Max. Cd. (80 to <90 Deg. Vert.)	4.04 (44.9%Lum)
Cutoff Classification (deprecated)	N.A. (absolute)

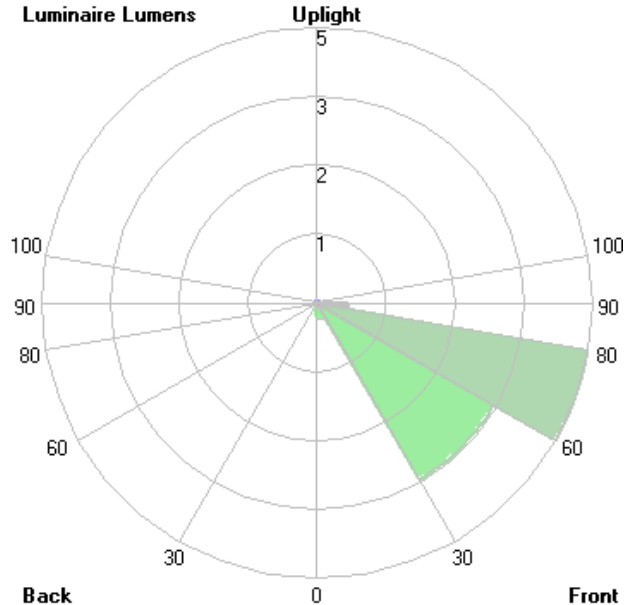
Lum. Classification System (LCS)

LCS Zone	Lumens	%Lamp	%Lum
FL (0-30)	0.3	N.A.	3.2
FM (30-60)	3.3	N.A.	38.9
FH (60-80)	4.5	N.A.	52.6
FVH(80-90)	0.5	N.A.	6.2
BL (0-30)	0.0	N.A.	0.0
BM (30-60)	0.0	N.A.	0.0
BH (60-80)	0.0	N.A.	0.0
BVH(80-90)	0.0	N.A.	0.0
UL (90-100)	0.0	N.A.	0.0
UH (100-180)	0.0	N.A.	0.0
Total	8.6	N.A.	100.0

BUG Rating B0-U0-G0



Mounting Height = 1 ft. Grid Spacing = 1 ft.



In the interest of product improvement, BEGA reserves the right to make technical changes without notice.