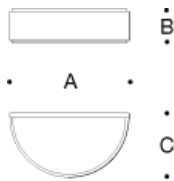


Tools Required:

- 2.5mm hex key  
Adjustable wrench



Dimensions

- A: 11-7/8 "  
B: 2-1/2 "  
C: 5-1/8 "



Weight: 4.85 lbs.

Notice to Installer for 12 283:

- See page 2 for specific product safety warnings.
- Select the desired trim ring or housing material finish by using appropriate code number as suffix.
  - 12 283.1 - White
  - 12 283.2 - Stainless steel
  - 12 283.3 - Chrome
- Mounts directly to a BEGA-provided 19 545 linear wiring box.
- Wiring box needs to be recessed into wall and must be flush with the finished surface.

19 545 - wiring box installation:

**Hollow (stud) wall construction** - Secure wiring box to wood or metal horizontal blocking. Connect conduit to wiring box (if needed) and pull wires for electrical connections to be made later.

**Poured concrete construction** - Attach wiring box to the concrete form. Connect conduit to wiring box (if needed) and pull wires for electrical connections to be made later. Pour concrete and remove form.

**IMPORTANT: Do not pour concrete directly on to box!**

12 283 - luminaire installation:

- Undo (2) 2.5mm hex screws on lower side of fixture main casting to remove fixture main casting/lens from luminaire base
- Feed luminaire wires through luminaire base.
- Make supply wiring and luminaire wiring connections inside the small opening linear wiring box (19 545):
  - MAIN VOLTAGE SUPPLY WIRE TO BLACK LUMINAIRE WIRE
  - NEUTRAL (COMMON) SUPPLY WIRE TO WHITE LUMINAIRE WIRE
  - GREEN GROUND WIRE TO GREEN LUMINAIRE WIRE.
- Attach and secure luminaire base to 19 545 wiring box using hardware by others (8-32 screws).
- Re-attach main casting with lens to luminaire base by tightening (2) 2.5mm hex screws.

Fig 1: Generic Image

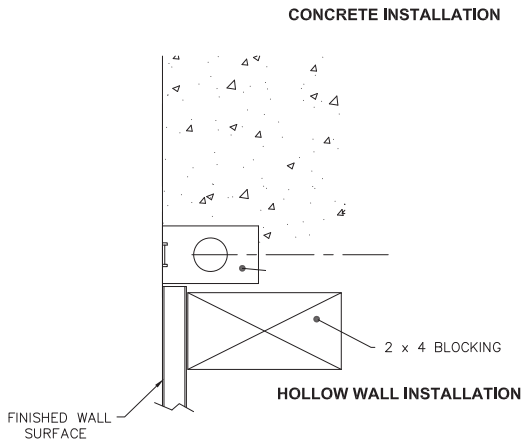
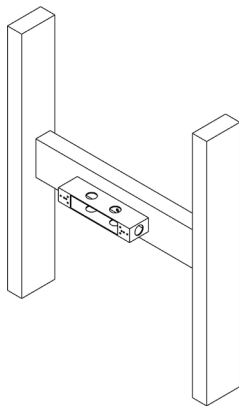


Fig 2: Generic Image



Relamping/Maintenance

No relamping required.

Accessories

Please refer to the appropriate accessory installation sheet for further instruction when applicable.

Linear wiring box    19 545

Replacement Parts

Description	Part No
LED module (3000K)	LED-0599/830
LED module (4000K)	LED-0599/840
Driver (120-277V)	76070

Lamp:    12.6W LED module

In the interest of product improvement, BEGA reserves the right to make technical changes without notice.

**Product Safety Warnings:**

**THIS PRODUCT MUST BE INSTALLED IN ACCORDANCE WITH THE APPLICABLE INSTALLATION CODE BY A PERSON FAMILIAR WITH THE CONSTRUCTION AND OPERATION OF THE PRODUCT AND THE HAZARDS INVOLVED. SUITABLE FOR DAMP LOCATIONS.**

**MIN 90°C SUPPLY CONDUCTORS.**

**CE PRODUIT DOIT ÊTRE INSTALLÉ SELON LE CODE D'INSTALLATION PERTINENT, PAR UNE PERSONNE QUI CONNAÎT BIEN LE PRODUIT ET SON FONCTIONNEMENT AINSI QUE LES RISQUES INHÉRENTS. CONVIENT AUX EMPLACEMENTS HUMIDES.**

**LES FILS D'ALIMENTATION 90°C MIN.**

---