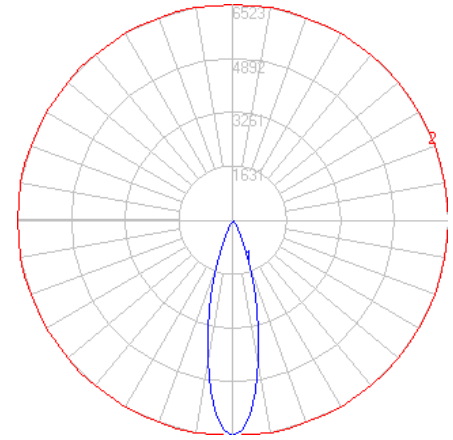
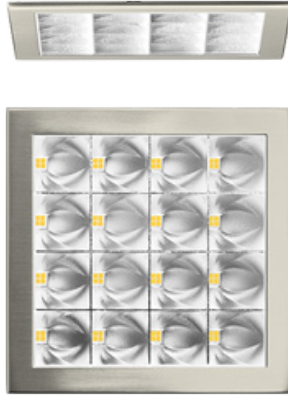


# BEGA



Photometric Filename: 12235.IES

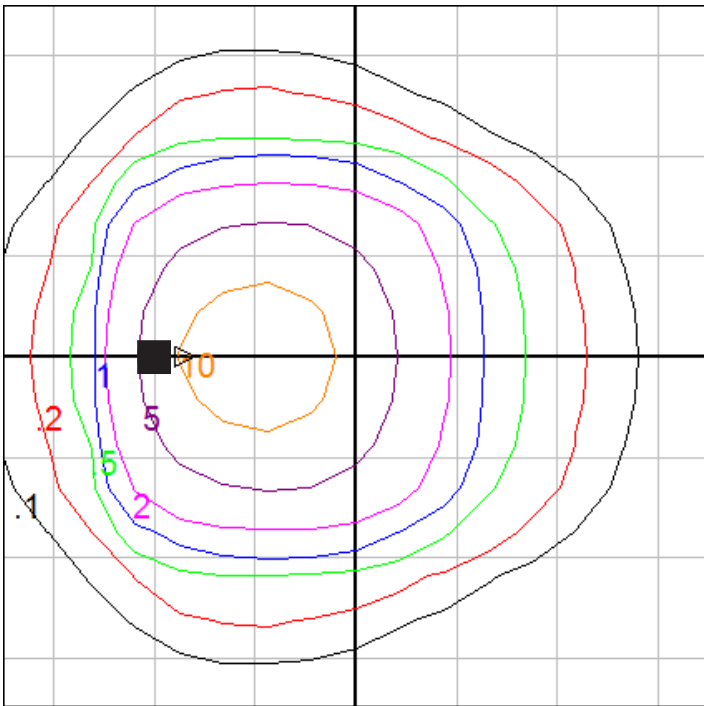
TEST: BE\_12235  
 TEST LAB: BEGA  
 DATE: 3/21/2016  
 LUMINAIRE: 12 235.X  
 LAMP: 23.2W LED

### Characteristics

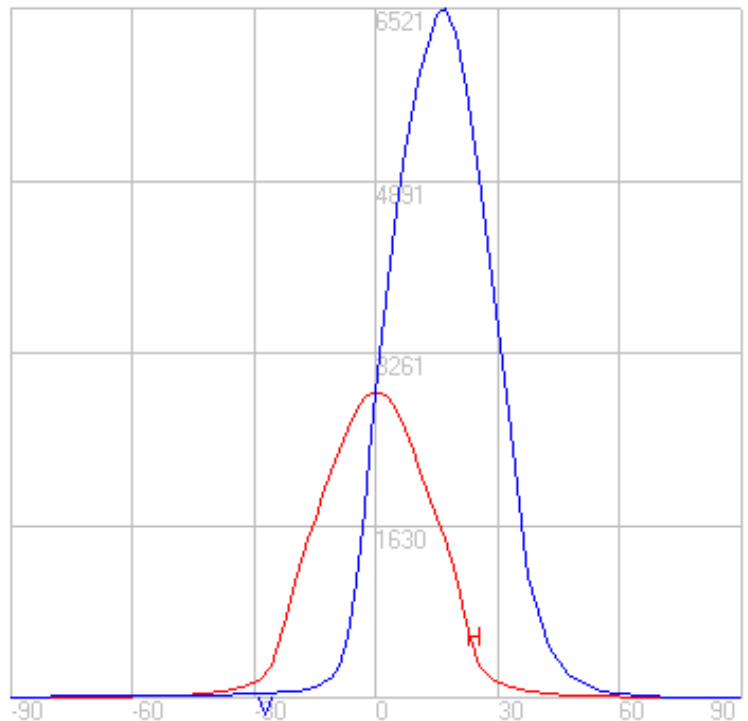
Lumens Per Lamp	N.A. (absolute)
Total Lamp Lumens	N.A. (absolute)
Luminaire Lumens	1931
Total Luminaire Efficiency	N.A.
Luminaire Efficacy Rating (LER)	69
Total Luminaire Watts	28
Ballast Factor	1.00
CIE Type	Direct
Spacing Criterion (0-180)	1.32
Spacing Criterion (90-270)	0.58
Spacing Criterion (Diagonal)	0.76
Basic Luminous Shape	Rectangular
Luminous Length (0-180)	0.47 ft
Luminous Width (90-270)	0.47 ft
Luminous Height	0.00 ft

### Characteristics

NEMA Type	4 H x 4 V
Maximum Candela	6521
Maximum Candela Angle	0 H 17 V
Horizontal Beam Angle (50%)	31.2
Vertical Beam Angle (50%)	29.7
Horizontal Field Angle (10%)	49.3
Vertical Field Angle (10%)	48.0
Lumens Per Lamp	N.A. (absolute)
Total Lamp Lumens	N.A. (absolute)
Beam Lumens	1010
Beam Efficiency	N.A.
Field Lumens	1745
Field Efficiency	N.A.
Spill Lumens	191
Luminaire Lumens	1937
Total Efficiency	N.A.
Total Luminaire Watts	28



Mounting Height = 20 ft. Grid Spacing = 5 ft.



In the interest of product improvement, BEGA reserves the right to make technical changes without notice.