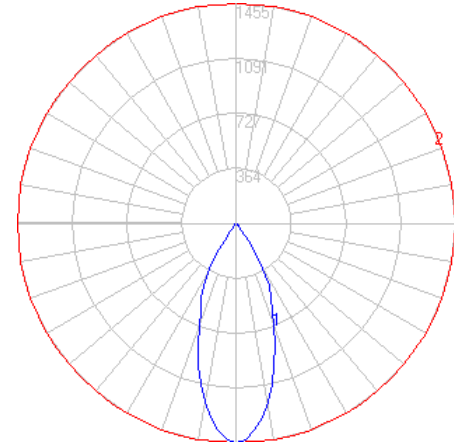


BEGA



Photometric Filename: 12202.IES

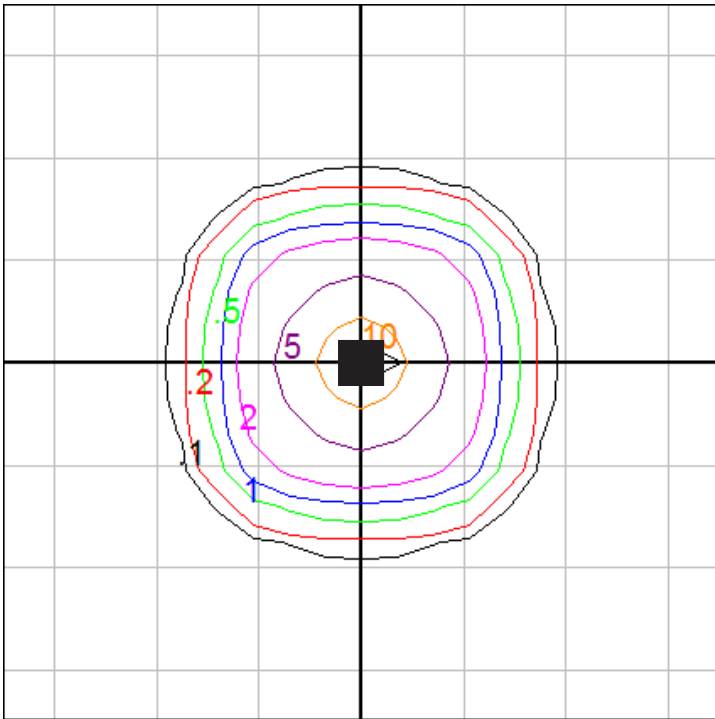
TEST: BE_12202
 TEST LAB: BEGA
 DATE: 12/04/2016
 LUMINAIRE: 12 202
 LAMP: 8.4W LED

Characteristics

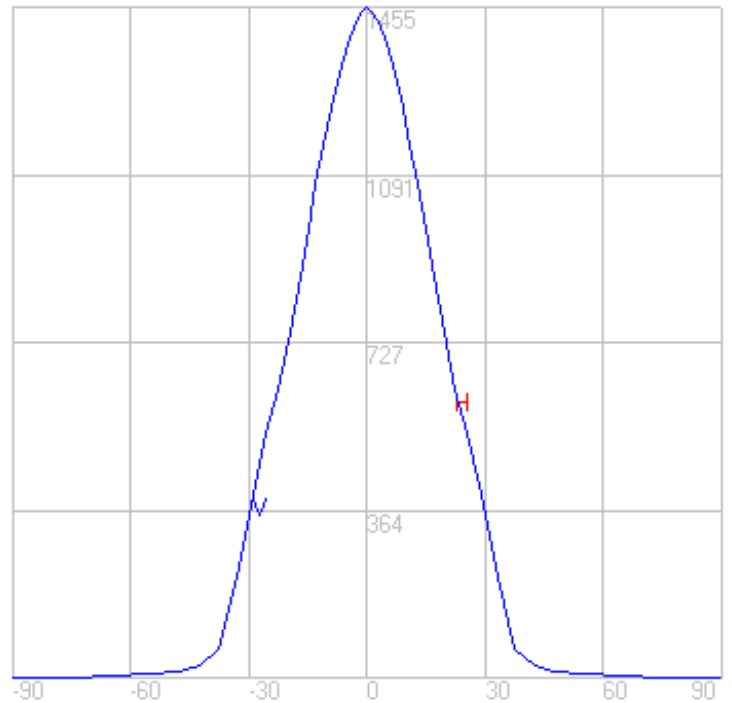
Lumens Per Lamp	N.A. (absolute)
Total Lamp Lumens	N.A. (absolute)
Luminaire Lumens	815
Total Luminaire Efficiency	N.A.
Luminaire Efficacy Rating (LER)	74
Total Luminaire Watts	11
Ballast Factor	1.00
CIE Type	Direct
Spacing Criterion (0-180)	0.64
Spacing Criterion (90-270)	0.64
Spacing Criterion (Diagonal)	0.74
Basic Luminous Shape	Rectangular
Luminous Length (0-180)	0.25 ft
Luminous Width (90-270)	0.25 ft
Luminous Height	0.00 ft

Characteristics

NEMA Type	5 H x 5 V
Maximum Candela	1454.9
Maximum Candela Angle	0 H 0 V
Horizontal Beam Angle (50%)	40.2
Vertical Beam Angle (50%)	40.2
Horizontal Field Angle (10%)	70.3
Vertical Field Angle (10%)	70.3
Lumens Per Lamp	N.A. (absolute)
Total Lamp Lumens	N.A. (absolute)
Beam Lumens	396
Beam Efficiency	N.A.
Field Lumens	752
Field Efficiency	N.A.
Spill Lumens	64
Luminaire Lumens	816
Total Efficiency	N.A.
Total Luminaire Watts	11



Mounting Height = 10 ft. Grid Spacing = 5 ft.



In the interest of product improvement, BEGA reserves the right to make technical changes without notice.