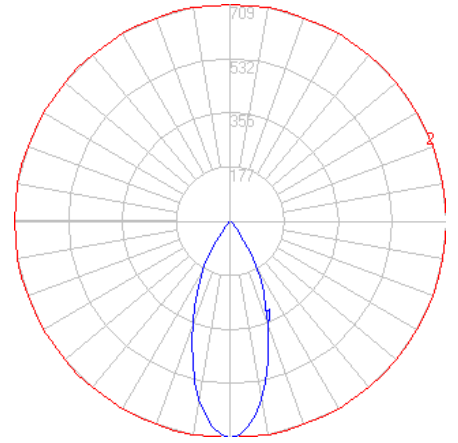
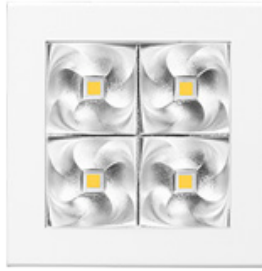


# BEGA

Photometric Filename: 12201.IES

TEST: BE\_12201  
 TEST LAB: BEGA  
 DATE: 5/5/2017  
 LUMINAIRE: 12 201  
 LAMP: 3W LED

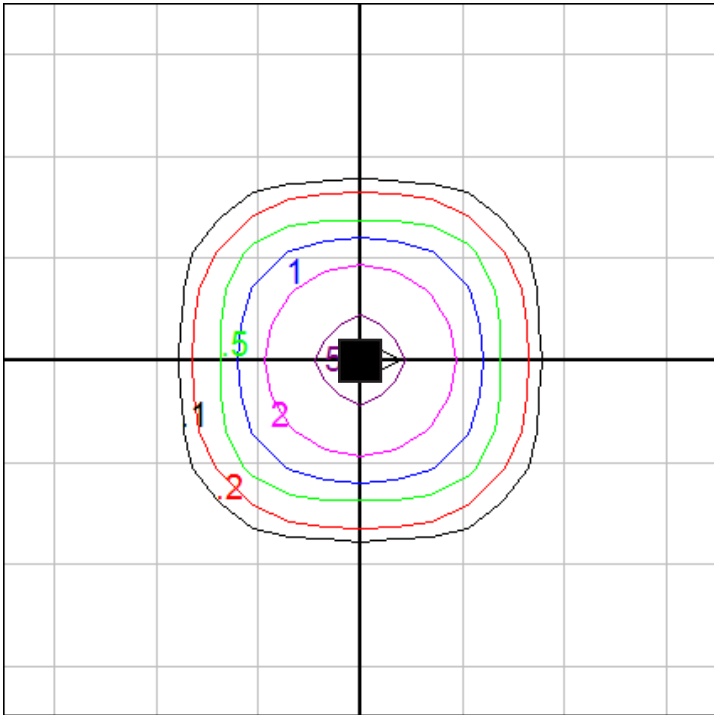


**Characteristics**

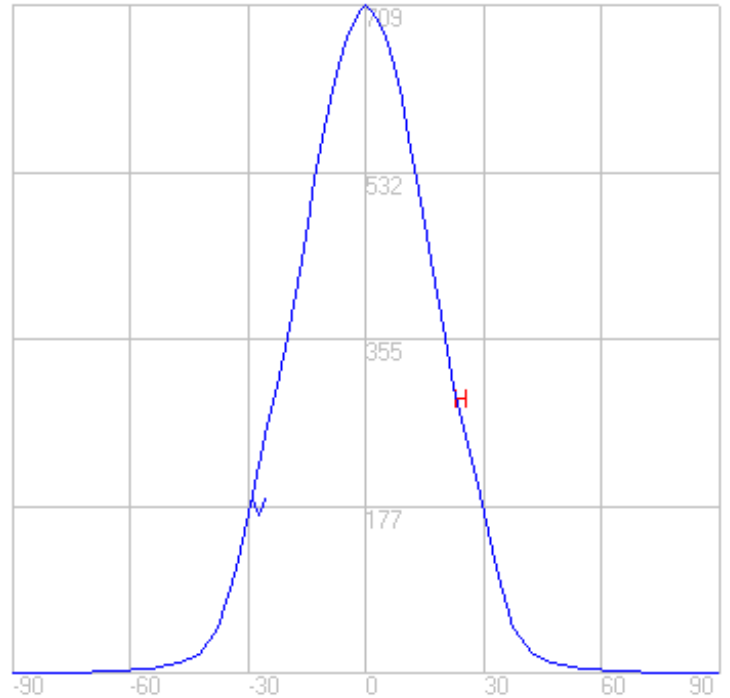
Lumens Per Lamp	N.A. (absolute)
Total Lamp Lumens	N.A. (absolute)
Luminaire Lumens	406
Total Luminaire Efficiency	N.A.
Luminaire Efficacy Rating (LER)	68
Total Luminaire Watts	6
Ballast Factor	1.00
CIE Type	Direct
Spacing Criterion (0-180)	0.64
Spacing Criterion (90-270)	0.64
Spacing Criterion (Diagonal)	0.74
Basic Luminous Shape	Rectangular
Luminous Length (0-180)	0.25 ft
Luminous Width (90-270)	0.25 ft
Luminous Height	0.00 ft

**Characteristics**

NEMA Type	5 H x 5 V
Maximum Candela	709.2
Maximum Candela Angle	0 H 0 V
Horizontal Beam Angle (50%)	40.3
Vertical Beam Angle (50%)	40.3
Horizontal Field Angle (10%)	71.7
Vertical Field Angle (10%)	71.7
Lumens Per Lamp	N.A. (absolute)
Total Lamp Lumens	N.A. (absolute)
Beam Lumens	194
Beam Efficiency	N.A.
Field Lumens	373
Field Efficiency	N.A.
Spill Lumens	33
Luminaire Lumens	407
Total Efficiency	N.A.
Total Luminaire Watts	6



Mounting Height = 10 ft. Grid Spacing = 5 ft.



In the interest of product improvement, BEGA reserves the right to make technical changes without notice.