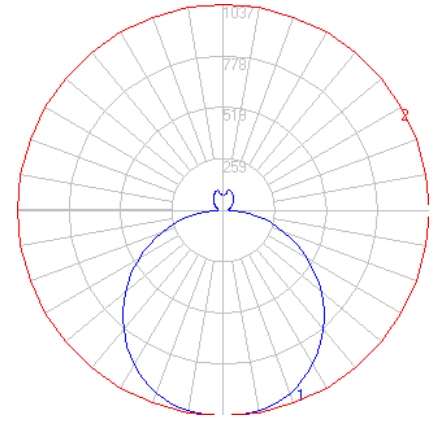


# BEGA



Photometric Filename: 12165.IES

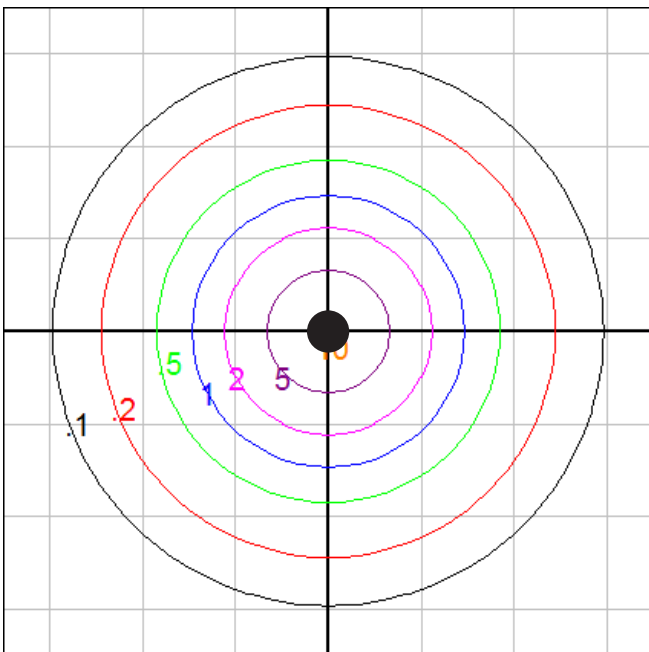
TEST: BE\_12165  
 TEST LAB: BEGA  
 DATE: 6/8/2016  
 LUMINAIRE: 12 165  
 LAMP: 37.8W LED

**Characteristics**

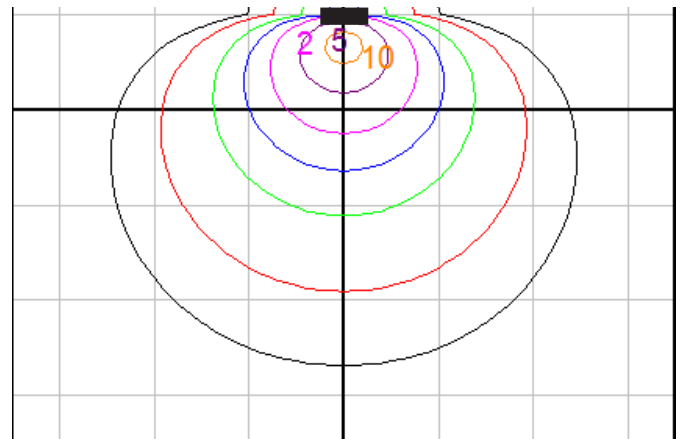
Lumens Per Lamp	N.A. (absolute)
Total Lamp Lumens	N.A. (absolute)
Luminaire Lumens	3522
Total Luminaire Efficiency	N.A.
Luminaire Efficacy Rating (LER)	80
Total Luminaire Watts	44
Ballast Factor	1.00
CIE Type	Direct
Spacing Criterion (0-180)	1.30
Spacing Criterion (90-270)	1.30
Spacing Criterion (Diagonal)	1.40
Basic Luminous Shape	Circular w/ Sides
Luminous Length (0-180)	0.00 ft
Luminous Width (90-270)	1.54 ft (Diameter)
Luminous Height	0.23 ft

**Zonal Lumen Summary**

Zone	Lumens
0-10	98.62
10-20	285.34
20-30	435.63
30-40	528.11
40-50	552.02
50-60	507.61
60-70	405.27
70-80	261.20
80-90	100.83
90-100	29.66
100-110	34.56
110-120	43.31
120-130	50.52
130-140	54.87
140-150	53.63
150-160	45.11
160-170	28.23
170-180	7.55



Ceiling mount - isofootcandle grid on floor  
 Mounting Height = 10 ft    Grid Spacing = 10 ft.



Wall mount - isofootcandle grid on floor  
 Mounting Height = 5 ft.    Grid Spacing = 10 ft.

In the interest of product improvement, BEGA reserves the right to make technical changes without notice.