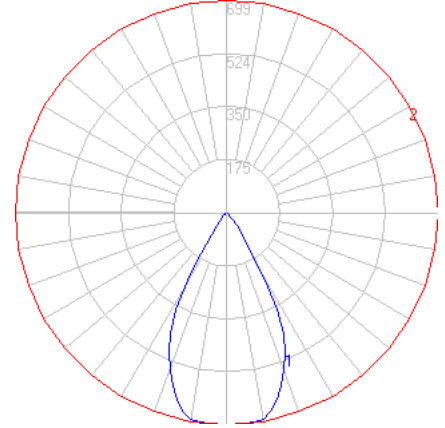


# BEGA

Photometric Filename: 12145.IES

TEST: LI\_12145  
 TEST LAB: BEGA  
 DATE: 4/29/2015  
 LUMINAIRE: 12 145.X  
 LAMP: 6.4W LED

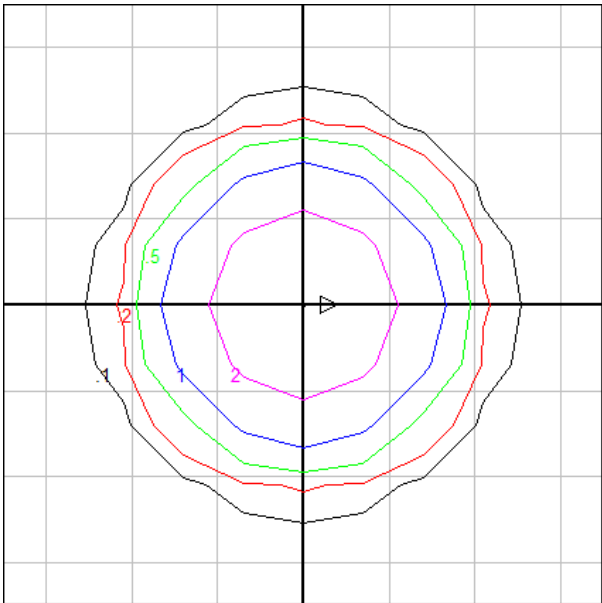


**Characteristics**

Lumens Per Lamp	N.A. (absolute)
Total Lamp Lumens	N.A. (absolute)
Luminaire Lumens	526
Total Luminaire Efficiency	N.A.
Luminaire Efficacy Rating (LER)	66
Total Luminaire Watts	8
Ballast Factor	1.00
CIE Type	Direct
Spacing Criterion (0-180)	0.92
Spacing Criterion (90-270)	0.92
Spacing Criterion (Diagonal)	0.82
Basic Luminous Shape	Circular
Luminous Length (0-180)	0.00 ft
Luminous Width (90-270)	0.16 ft (Diameter)
Luminous Height	0.00 ft

**Zonal Lumen Summary**

Zone	Lumens
0-10	66.51
10-20	176.90
20-30	193.82
30-40	67.52
40-50	10.88
50-60	3.49
60-70	3.32
70-80	2.56
80-90	0.72
90-100	0.01
100-110	0.00
110-120	0.00
120-130	0.00
130-140	0.00
140-150	0.00
150-160	0.00
160-170	0.00
170-180	0.00



Mounting Height = 15 ft. Grid Spacing = 5 ft.

In the interest of product improvement, BEGA reserves the right to make technical changes without notice.